

# Writing Broadening Participation in Computing (BPC) Plans

Jeff Forbes [jforbes@nsf.gov](mailto:jforbes@nsf.gov)

Education & Workforce

Division for Computer & Network Systems

NSF Directorate for Computer & Information Science & Engineering

# Motivation for the BPC Initiative

“It will take more than good intentions or business as usual, however, to reverse longstanding underrepresentation. **It will take committed, focused, and sustained efforts on the part of many in the computing community.**”

“CISE will address BP programmatically both through focused activities and through **the inclusion of BPC efforts as an *accepted and expected* part of its research and education award portfolios.**”



# Timeline of the BPC Initiative

- **Fiscal Year 2017:** NSF 17-110, *Dear Colleague Letter: Pursuing Meaningful Actions in Support of BPC*, announced
- **Fiscal Year 2018:** BPC Project plans *encouraged* for Expeditions in Computing, Cyber-Physical Systems, and Secure & Trustworthy Cyberspace Frontier submissions
- **Fiscal Year 2019-2021:** BPC Project plans *required by time of award* in Medium and Large proposals submitted to core programs, CPS, and SaTC. *Departmental BPC Plans encouraged*
- **Fiscal Year 2022:** BPC Project plans *required at time of submission*.

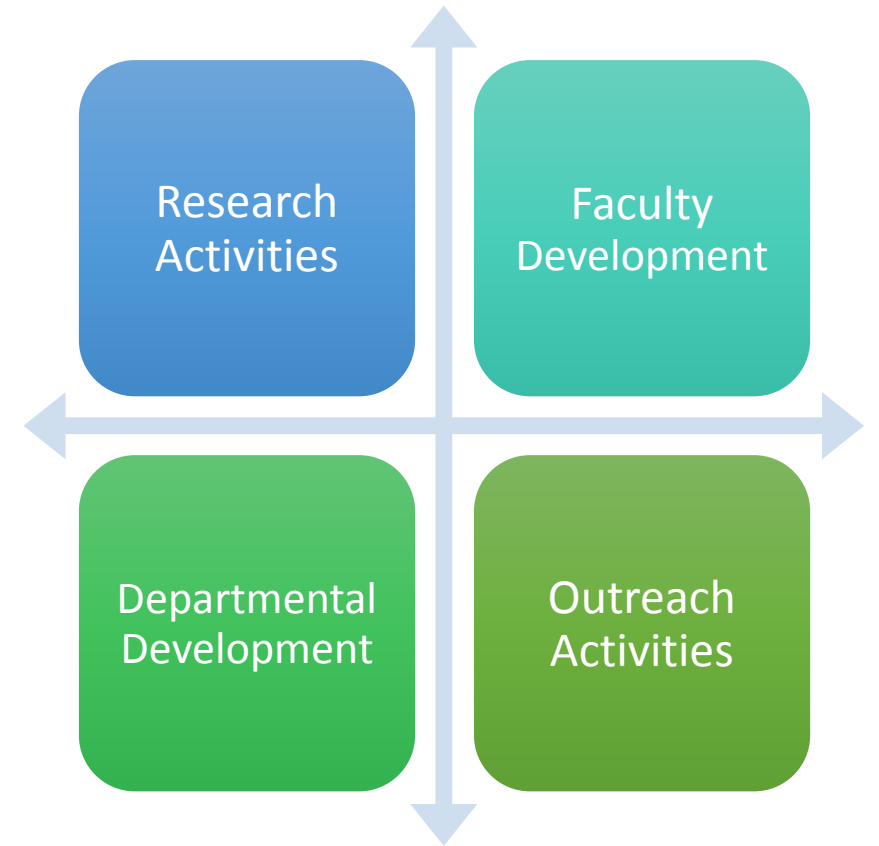


# Guiding Principles for BPC Effort

BPC requires **culture change** in colleges/ universities, departments, classes, research groups, professional organizations & K-12

CISE research proposals include a *meaningful* plan to broaden participation in computing

Measurable progress towards diversifying the CISE Research Community



# 5 elements of a meaningful BPC plan

1. **Goal and Context:** Does the plan describe a goal and the data from your institution(s) or local community that justify that goal?
2. **Intended population(s):** Does the plan identify the characteristics of participants from an underrepresented group listed above, including school level (e.g., African American undergraduates or female high-school students)?
3. **Strategy:** Does the plan describe activities that address the stated goal(s) and intended population(s)?
4. **Measurement:** Is there a plan to measure the outcome(s) of the activities?
5. **PI Engagement:** Is there a clear role for each PI and co-PI? Does the plan describe how the PI is prepared (or will prepare or collaborate) to do the proposed work?

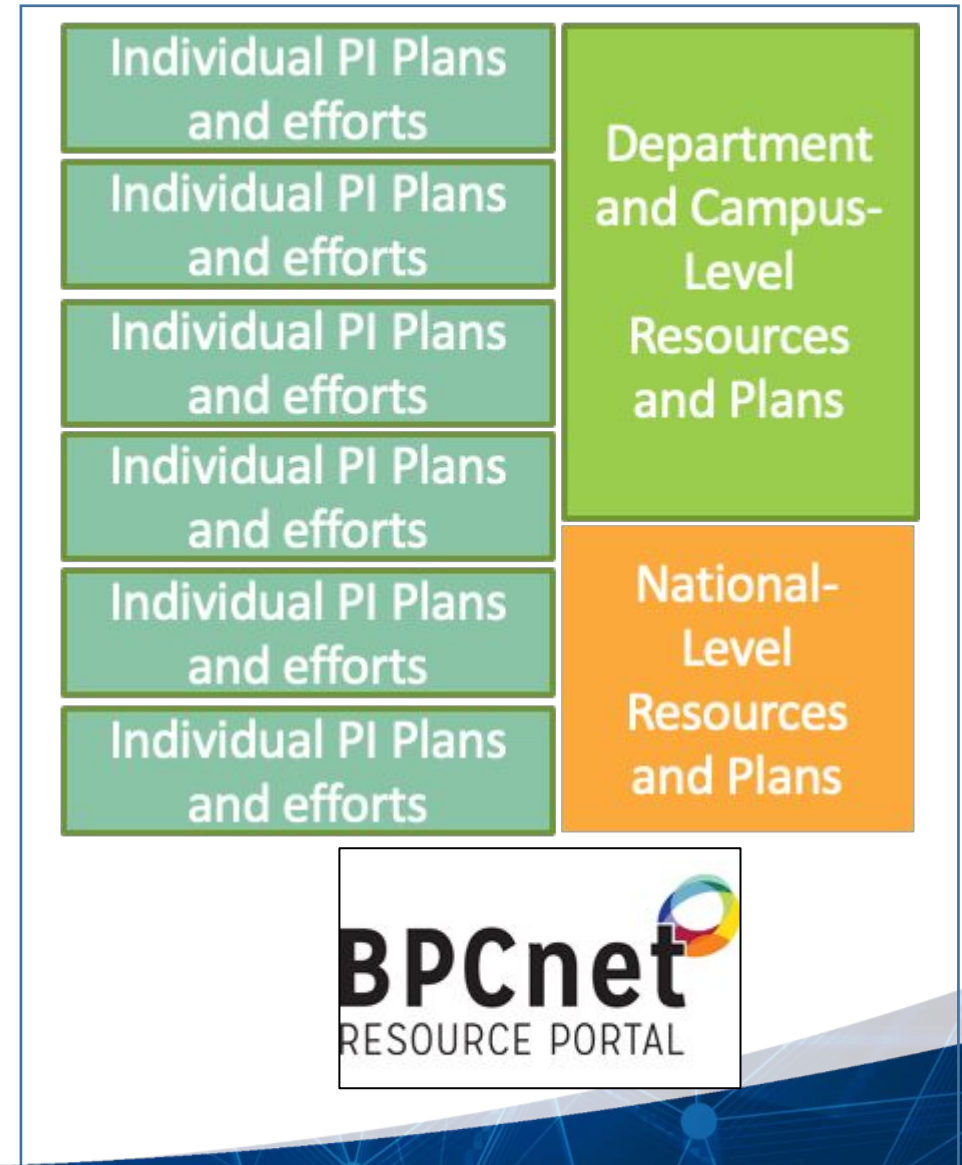
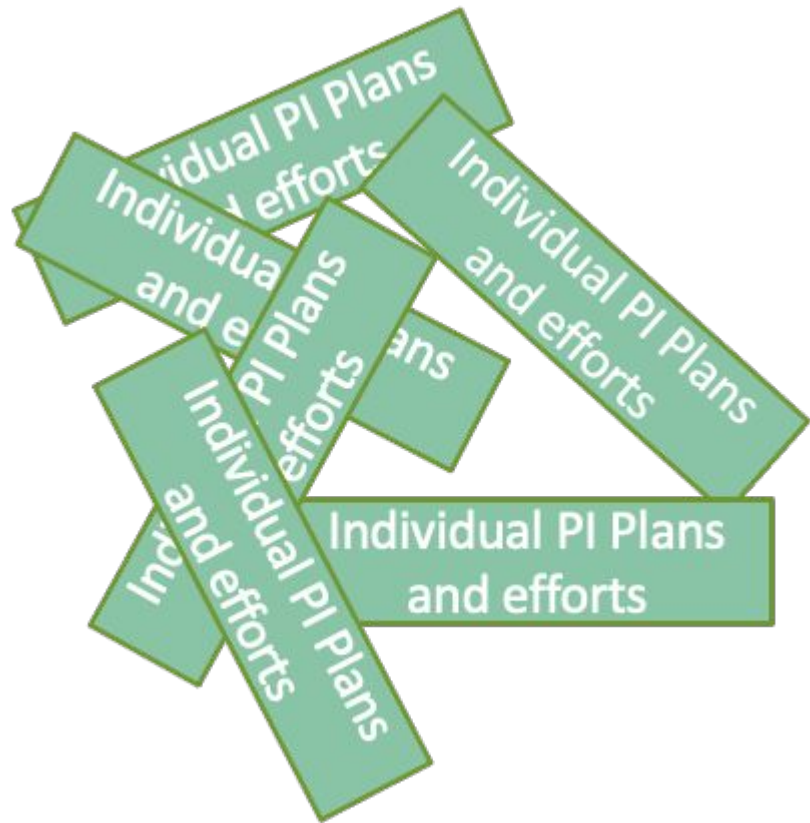


# Challenges for BPC Plans

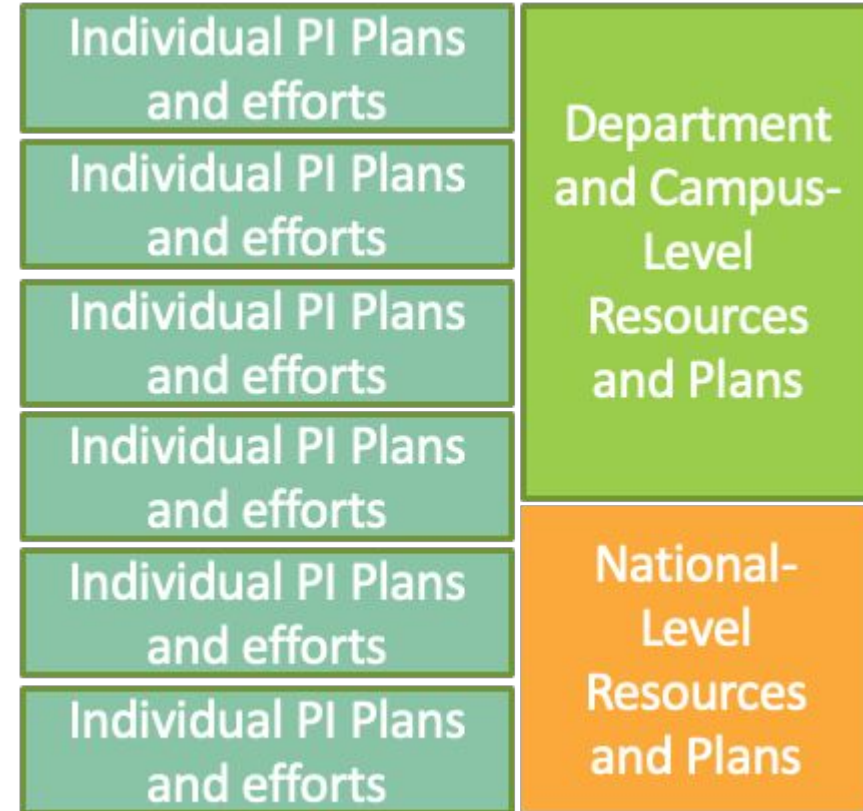
- A meaningful BPC plan should answer positively for all five elements *for all PIs and co-PIs*.
- The BPC Plan activities **do not** need to relate to the proposed research.
- Novelty in the BPC plan is not required. PIs can implement a best practice.
- Be realistic about your expertise and capacity
- Do not confuse *broader impacts* with *broadening participation*.
  - Proposed projects require both.
  - The proposed activities for the two can be related.
- Building on existing local and national resources?



# Supporting the CISE Community in BPC Plans



- [Activity library](#): A collection of existing BPC programs and activities.
- [BPC Alliances](#): Coalitions supported by NSF.
- [Checklists and templates](#): Resources for developing project BPC plans.
- [Departmental BPC plan verification](#): Instructions on how to verify a departmental BPC plan.
- [Statistics and Data Hub](#): A compilation of publicly available data on postsecondary degrees awarded and K-12 enrollment.
- [Undergraduate BPC Literature Database](#): A collection of scholarly articles on BPC for college students.
- [Consulting, workshops and events](#)





# Types of BPC Plans

## Project BPC Plans

Describes **PI** actions  
Submitted to NSF

### Standalone Project BPC Plan

- One plan for the *entire* proposal
- 3 pages total for a proposal

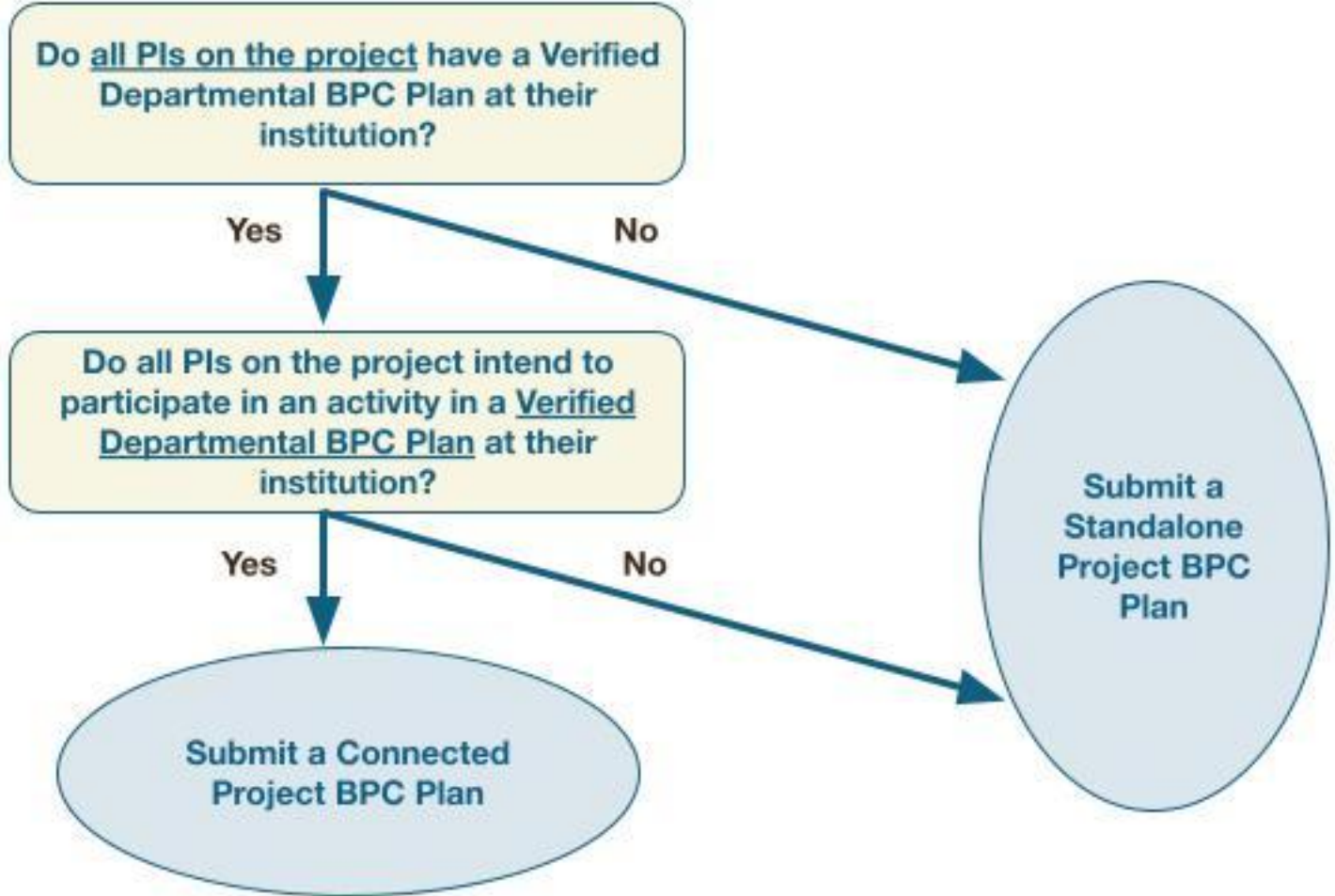
### Connected Project BPC Plan

- One plan per each institution in a proposal
- For each institution:
  - 1 page PI plan +
  - 2 page Verified Departmental Plan

### Departmental BPC Plan

- Describes **department** actions
- Verified by BPCnet.org
- 2 pages





# Funding for BPC Activities

1. Request funding at award time for BPC activities
  - Costs for the BPC activities are separate from the stated budget limits
2. Request a **BPC Supplement (NSF 24-030)** to either
  - extend the reach of current BPC activities or
  - coordinate BPC activities within a department or similar unit.
3. Submit a **BPC Demonstration Project (NSF 21-571)** proposal to develop and evaluate a pilot of a BPC intervention



# BPC Supplements

- Medium and larger awards for CISE Core Programs, SaTC, and CPS programs require a meaningful BPC plan and can request a BPC Supplement
- Supplements should either:
  - **Extend the reach** of current BPC activities that have some evidence of effectiveness to more participants or institutions;
    - **Example:** Partner with community colleges to offer summer research experiences and webinars in Quantum Information Science & Engineering
  - **Coordinate or institutionalize** BPC activities within a department or similar unit.
    - **Example:** Develop a departmental DEI/BPC plan with advice from NCWIT and evaluate initial interventions



# Reporting Requirements

- Check the solicitation!
- Include in the appropriate sections of your annual report
  - A summary of what each PI and co-PI did, including any changes to the plan;
  - Numbers of events, participants, and participant demographics (if there are barriers to collecting this data, describe those limitations and provide the best estimates possible); and
  - A reflection (supported by data if available) on progress, any unexpected challenges or results, and anything planned.



# Questions?



**NSF CISE BPC Initiative**



**NSF BPC FAQ (22-125)**



**CISE Core Programs  
Solicitation (23-561)**

