

# THE FEDERAL CASE FOR COMPUTING

PETER HARSHA  
CRA

LISPI 2015  
APRIL 27-28, 2015



# CRA GOVERNMENT AFFAIRS



Me



Brian Mosley  
Policy Analyst



## STRUCTURE OF THIS TALK

- A bit about CRA and where we fit
- The problems we face
- How we deal with them
- Congressional scrutiny



**CRA**

Computing Research  
Association

- + 200+ PhD-granting computing depts.
- + 21 industrial and federal research labs
- + Six affiliated professional societies



**CRA**

Computing Research  
Association



**CRA**

Computing Research  
Association

**Mission: “to unite industry, government and academia to enhance innovation by strengthening research and advanced education in computing.”**



**CRA**

Computing Research  
Association

## GOAL

Remain the “organization of record” for computing research policy issues

**WE'RE PART OF AN ACTIVE COMPUTING POLICY COMMUNITY**

## WE'RE PART OF AN ACTIVE COMPUTING POLICY COMMUNITY

- ACM Ed Policy/USACM

## **WE'RE PART OF AN ACTIVE COMPUTING POLICY COMMUNITY**

- **ACM Ed Policy/USACM**
- **IEEE-CS/IEEE-USA**

## WE'RE PART OF AN ACTIVE COMPUTING POLICY COMMUNITY

- ACM Ed Policy/USACM
- IEEE-CS/IEEE-USA
- SIAM



## WE'RE PART OF AN ACTIVE COMPUTING POLICY COMMUNITY

- ACM Ed Policy/USACM
- IEEE-CS/IEEE-USA
- SIAM
- CASC

## **WE'RE PART OF AN ACTIVE COMPUTING POLICY COMMUNITY**

- **ACM Ed Policy/USACM**
- **EDUCAUSE**
- **IEEE-CS/IEEE-USA**
- **SIAM**
- **CASC**

## WE'RE PART OF AN ACTIVE COMPUTING POLICY COMMUNITY

- ACM Ed Policy/USACM
- IEEE-CS/IEEE-USA
- SIAM
- CASC
- EDUCAUSE
- AAI, USENIX

## WE'RE PART OF AN ACTIVE COMPUTING POLICY COMMUNITY

- ACM Ed Policy/USACM
- IEEE-CS/IEEE-USA
- SIAM
- CASC
- EDUCAUSE
- AAI, USENIX
- NCWIT

## WE'RE PART OF AN ACTIVE COMPUTING POLICY COMMUNITY

- ACM Ed Policy/USACM
- IEEE-CS/IEEE-USA
- SIAM
- CASC
- EDUCAUSE
- AAI, USENIX
- NCWIT
- Industry Groups

## WE'RE PART OF AN ACTIVE COMPUTING POLICY COMMUNITY

- ACM Ed Policy/USACM
- IEEE-CS/IEEE-USA
- SIAM
- CASC
- EDUCAUSE
- AAI, USENIX
- NCWIT
- Industry Groups

# INNOVATION POLICY AND MAINTAINING THE HEALTH OF THE RESEARCH ECOSYSTEM

- **Research funding and priorities**
- **Access to talent**
- **Impediments to research**



**STAKES ARE HIGH**



Abyssinian Development Corp  
Ad Council  
Adler Planetarium & Astronomy Museum  
Afikim Foundation  
Alaska Sealife Center  
Alfalit International  
Alliance of Nonprofit Mailers  
Alliance to Protect Nantucket Sound  
Allies for Cherry Point's Tomorrow  
Alpha One Foundation  
American Assn of Law Libraries  
American Assn of Museums  
American Commodity Distribution Assn  
American Defense Council  
American Friends of Hebrew University  
American Hellenic Educ Progressive Assn  
American Library Assn  
American Museum of Natural History  
American Society of Plant Biologists  
American Tinnitus Assn  
American Vets Disabled for Life Memorial  
Americans for the Arts  
Americans United/Separation Church/State  
AmeriDream Inc  
Amistad America  
An Achievable Dream Inc  
Andre Agassi Charitable Foundation  
Appalachia Service Project  
Aquarium of the Pacific  
Arison Family Trust  
Arizona Science Center  
Asphalt Green  
Assn for Homeowners Across America  
Assn of Critical Care Transport  
Assn of Fundraising Professionals  
Attic Correctional Services  
August Wilson Cntr/African Amer Culture  
Austin Hill Country Conservancy  
Benetech Initiative  
Big Brothers/Big Sisters of America  
Bipartisan Advocacy Center  
Bipartisan Policy Center  
Bipartisan Policy Ctr Advocacy Network  
Boston Museum of Fine Arts  
Boston Museum of Science

Civil War Preservation Trust  
Cleveland Museum of Art  
Climate Protection Action Fund  
Cmte Supporting Democ & Justice Pakistan  
Coalition for Tax Fairness  
Coalition for the Homeless  
Common Cause  
Communicating for Agriculture  
Community Food Security Coalition  
Connected Nation Development Corp  
Connecticut Center/Science Exploration  
Copyright Alliance  
Corcoran Gallery Of Art  
Corporate Voices for Working Families  
Corporation for Enterprise Development  
Council for Citizens Against Govt Waste  
Council on Foundations  
Crim Fitness Foundation  
Cure Alzheimers Fund  
Dakota Boys & Girls Ranch  
DC Central Kitchen  
Democracy 21  
Denver Museum of Nature & Science  
Dialysis Patient Citizens  
Discovery Science Center  
Duane Morris Government Affairs  
Duluth Children's Museum  
ECMC Group  
Envision  
Families of Flight 93  
Federation of State Humanities Council  
Fermi Research Alliance  
Field Museum  
Figge Art Museum  
Fight Crime: Invest In Kids  
First Candle  
Folger Shakespeare Library  
Fort Wayne Allen County Economic  
Foundation for a Better Oregon  
Fraternal Order of Eagles  
Friends of Charities Assn  
Friends of the Griffith Observatory  
Friends of the World Food Program  
From the Top  
Future of Music Coalition

John G Shedd Aquarium  
Kansas Bioscience Authority  
Kessler Foundation  
Kulanu  
Lance Armstrong Foundation  
Lane Transit District  
Lawrence Hall Youth Services  
Lawyers Committee Civil Rights Under La  
League of Women Voters of the US  
Liberty Science Center  
Library Copyright Alliance  
Light House International  
Lincoln Park Zoo  
Local Initiatives Support Corp  
Lymphoma Research Foundation  
Make It Right Foundation  
Maltz Museum of Jewish Heritage  
Mansfield Foundation  
MATCH Coalition  
MCNC  
Medical Library Assn  
MERS/Missouri Goodwill Industries  
Metropolitan Museum of Art  
Miami Museum of Science & Space Trans  
Miami Project to Cure Paralysis  
Michigan Research Institute  
Midpeninsula Regional Open Space Dist  
Military Child Education Coalition  
Missouri Botanical Garden  
Missouri Public Transit Assn  
Monterey Bay Aquarium  
Mote Marine Laboratory  
Muscular Dystrophy Assn  
Museum of Flight  
Museum of Latin American Art  
Museum of Science & Industry  
Museum of the City of New York  
My Turn Inc  
Mystic Marine Life Aquarium  
Mystic Seaport Museum  
National Aquarium in Baltimore  
National Aviary  
National Building Museum 10  
National Center for State Courts  
National Center for Victims of Crime

Abyssinian Development Corp  
Ad Council  
Adler Planetarium & Astronomy Museum  
Afikim Foundation  
Alaska Sealife Center  
Alfalit International  
Alliance of Nonprofit Mailers  
Alliance to Protect Nantucket Sound  
Allies for Cherry Point's Tomorrow  
Alpha One Foundation  
American Assn of Law Libraries  
American Assn of Museums  
American Commodity Distribution Assn  
American Defense Council  
American Friends of Hebrew University  
American Hellenic Educ Progressive Assn  
American Library Assn  
American Museum of Natural History  
American Society of Plant Biologists  
American Tinnitus Assn  
American Vets Disabled for Life Memorial  
Americans for the Arts  
Americans United/Separation Church/State  
AmeriDream Inc  
Amistad America  
An Achievable Dream Inc  
Andre Agassi Charitable Foundation  
Appalachia Service Project  
Aquarium of the Pacific  
Arison Family Trust  
Arizona Science Center  
Asphalt Green  
Assn for Homeowners Across America  
Assn of Critical Care Transport  
Assn of Fundraising Professionals  
Attic Correctional Services  
August Wilson Cntr/African Amer Culture  
Austin Hill Country Conservancy  
Benetech Initiative  
Big Brothers/Big Sisters of America  
Bipartisan Advocacy Center  
Bipartisan Policy Center  
Bipartisan Policy Ctr Advocacy Network  
Boston Museum of Fine Arts  
Boston Museum of Science

Civil War Preservation Trust  
Cleveland Museum of Art  
Climate Protection Action Fund  
Cmte Supporting Democ & Justice Pakistan  
Coalition for Tax Fairness  
Coalition for the Homeless  
Common Cause  
Communicating for Agriculture  
Community Food Security Coalition  
Connected Nation Development Corp  
Connecticut Center/Science Exploration  
Copyright Alliance  
Corcoran Gallery Of Art  
Corporate Voices for Working Families  
Corporation for Enterprise Development  
Council for Citizens Against Govt Waste  
Council on Foundations  
Crim Fitness Foundation  
Cure Alzheimers Fund  
Dakota Boys & Girls Ranch  
DC Central Kitchen  
Democracy 21  
Denver Museum of Nature & Science  
Dialysis Patient Citizens  
Discovery Science Center  
Duane Morris Government Affairs  
Duluth Children's Museum  
ECMC Group  
Envision  
Families of Flight 93  
Federation of State Humanities Council  
Fermi Research Alliance  
Field Museum  
Figge Art Museum  
Fight Crime: Invest In Kids  
First Candle  
Folger Shakespeare Library  
Fort Wayne Allen County Economic  
Foundation for a Better Oregon  
Fraternal Order of Eagles  
Friends of Charities Assn  
Friends of the Griffith Observatory  
Friends of the World Food Program  
From the Top  
Future of Music Coalition

John G Shedd Aquarium  
Kansas Bioscience Authority  
Kessler Foundation  
Kulanu  
Lance Armstrong Foundation  
Lane Transit District  
Lawrence Hall Youth Services  
Lawyers Committee Civil Rights Under La  
League of Women Voters of the US  
Liberty Science Center  
Library Copyright Alliance  
Light House International  
Lincoln Park Zoo  
Local Initiatives Support Corp  
Lymphoma Research Foundation  
Make It Right Foundation  
Maltz Museum of Jewish Heritage  
Mansfield Foundation  
MATCH Coalition  
MCNC  
Medical Library Assn  
MERS/Missouri Goodwill Industries  
Metropolitan Museum of Art  
Miami Museum of Science & Space Trans  
Miami Project to Cure Paralysis  
Michigan Research Institute  
Midpeninsula Regional Open Space Dist  
Military Child Education Coalition  
Missouri Botanical Garden  
Missouri Public Transit Assn  
Monterey Bay Aquarium  
Mote Marine Laboratory  
Muscular Dystrophy Assn  
Museum of Flight  
Museum of Latin American Art  
Museum of Science & Industry  
Museum of the City of New York  
My Turn Inc  
Mystic Marine Life Aquarium  
Mystic Seaport Museum  
National Aquarium in Baltimore  
National Aviary  
National Building Museum 10  
National Center for State Courts  
National Center for Victims of Crime

# # of Lobbyists (FY13)

Abyssinian Development Corp  
Ad Council  
Adler Planetarium & Astronomy Museum  
Afikim Foundation  
Alaska Sealife Center  
Alfalit International  
Alliance of Nonprofit Mailers  
Alliance to Protect Nantucket Sound  
Allies for Cherry Point's Tomorrow  
Alpha One Foundation  
American Assn of Law Libraries  
American Assn of Museums  
American Commodity Distribution Assn  
American Defense Council  
American Friends of Hebrew University  
American Hellenic Educ Progressive Assn  
American Library Assn  
American Museum of Natural History  
American Society of Plant Biologists  
American Tinnitus Assn  
American Vets Disabled for Life Memorial  
Americans for the Arts  
Americans United/Separation Church/State  
AmeriDream Inc  
Amistad America  
An Achievable Dream Inc  
Andre Agassi Charitable Foundation  
Appalachia Service Project  
Aquarium of the Pacific  
Arison Family Trust  
Arizona Science Center  
Asphalt Green  
Assn for Homeowners Across America  
Assn of Critical Care Transport  
Assn of Fundraising Professionals  
Attic Correctional Services  
August Wilson Cntr/African Amer Culture  
Austin Hill Country Conservancy  
Benetech Initiative  
Big Brothers/Big Sisters of America  
Bipartisan Advocacy Center  
Bipartisan Policy Center  
Bipartisan Policy Ctr Advocacy Network  
Boston Museum of Fine Arts  
Boston Museum of Science

Civil War Preservation Trust  
Cleveland Museum of Art  
Climate Protection Action Fund  
Cmte Supporting Democ & Justice Pakistan  
Coalition for Tax Fairness  
Coalition for the Homeless  
Common Cause  
Commonwealth of Massachusetts  
Community Food Security Coalition  
Connected Nation Development Corp  
Connecticut Center/Science Exploration  
Copyright Alliance  
Corcoran Gallery Of Art  
Corporate Voices for Working Families  
Corporation for Enterprise Development  
Council for Citizens Against Govt Waste  
Council on Foundations  
Crim Fitness Foundation  
Cure Alzheimers Fund  
Dakota Boys & Girls Ranch  
DC Central Kitchen  
Democracy 21  
Denver Museum of Nature & Science  
Dialysis Patient Citizens  
Discovery Science Center  
Duane Morris Government Affairs  
Duluth Children's Museum  
ECMC Group  
Envision  
Families of Flight 93  
Federation of State Humanities Council  
Fermi Research Alliance  
Field Museum  
Figge Art Museum  
Fight Crime: Invest In Kids  
First Candle  
Folger Shakespeare Library  
Fort Wayne Allen County Economic  
Foundation for a Better Oregon  
Fraternal Order of Eagles  
Friends of Charities Assn  
Friends of the Griffith Observatory  
Friends of the World Food Program  
From the Top  
Future of Music Coalition

John G Shedd Aquarium  
Kansas Bioscience Authority  
Kessler Foundation  
Kulanu  
Lance Armstrong Foundation  
Lynch Transit District  
Lorraine Hall Youth Services  
Lobbyists Committee Civil Rights Under La  
League of Women Voters of the US  
Liberty Science Center  
Library Copyright Alliance  
Light House International  
Lincoln Park Zoo  
Local Initiatives Support Corp  
Lymphoma Research Foundation  
Make It Right Foundation  
Maltz Museum of Jewish Heritage  
Mansfield Foundation  
MATCH Coalition  
MCNC  
Medical Library Assn  
MERS/Missouri Goodwill Industries  
Metropolitan Museum of Art  
Miami Museum of Science & Space Trans  
Miami Project to Cure Paralysis  
Michigan Research Institute  
Midpeninsula Regional Open Space Dist  
Military Child Education Coalition  
Missouri Botanical Garden  
Missouri Public Transit Assn  
Monterey Bay Aquarium  
Mote Marine Laboratory  
Muscular Dystrophy Assn  
Museum of Flight  
Museum of Latin American Art  
Museum of Science & Industry  
Museum of the City of New York  
My Turn Inc  
Mystic Marine Life Aquarium  
Mystic Seaport Museum  
National Aquarium in Baltimore  
National Aviary  
National Building Museum 10  
National Center for State Courts  
National Center for Victims of Crime

# # of Lobbyists (FY13)

12,351

Abyssinian Development Corp  
Ad Council  
Adler Planetarium & Astronomy Museum  
Afikim Foundation  
Alaska Sealife Center  
Alfalit International  
Alliance of Nonprofit Mailers  
Alliance to Protect Nantucket Sound  
Allies for Cherry Point's Tomorrow  
Alpha One Foundation  
American Assn of Law Libraries  
American Assn of Museums  
American Commodity Distribution Assn  
American Defense Council  
American Friends of Hebrew University  
American Hellenic Educ Progressive Assn  
American Library Assn  
American Museum of Natural History  
American Society of Plant Biologists  
American Tinnitus Assn  
American Vets Disabled for Life Memorial  
Americans for the Arts  
Americans United/Separation Church/State  
AmeriDream Inc  
Amistad America  
An Achievable Dream Inc  
Andre Agassi Charitable Foundation  
Appalachia Service Project  
Aquarium of the Pacific  
Arison Family Trust  
Arizona Science Center  
Asphalt Green  
Assn for Homeowners Across America  
Assn of Critical Care Transport  
Assn of Fundraising Professionals  
Attic Correctional Services  
August Wilson Cntr/African Amer Culture  
Austin Hill Country Conservancy  
Benetech Initiative  
Big Brothers/Big Sisters of America  
Bipartisan Advocacy Center  
Bipartisan Policy Center  
Bipartisan Policy Ctr Advocacy Network  
Boston Museum of Fine Arts  
Boston Museum of Science

Civil War Preservation Trust  
Cleveland Museum of Art  
Climate Protection Action Fund  
Cmte Supporting Democ & Justice Pakistan  
Coalition for Tax Fairness  
Coalition for the Homeless  
Common Cause  
Commonwealth for Agriculture  
Community Food Security Coalition  
Connected Nation Development Corp  
Connecticut Center/Science Exploration  
Coryell Alliance  
Corcoran Gallery of Art  
Corporate Voices for Working Families  
Corporate for Economic Development  
Council for Citizens Against Govt Waste  
Council on Foundations  
Crim Fitness Foundation  
Cure Alzheimers Fund  
Dakota Boys & Girls Ranch  
DC Central Kitchen  
Democracy 21  
Denver Museum of Nature & Science  
Dialysis Patient Citizens  
Discovery Science Center  
Duane Morris Government Affairs  
Duluth Children's Museum  
ECMC Group  
Envision  
Families of Flight 93  
Federation of State Humanities Council  
Fermi Research Alliance  
Field Museum  
Figge Art Museum  
Fight Crime: Invest In Kids  
First Candle  
Folger Shakespeare Library  
Fort Wayne Allen County Economic  
Foundation for a Better Oregon  
Fraternal Order of Eagles  
Friends of Charities Assn  
Friends of the Griffith Observatory  
Friends of the World Food Program  
From the Top  
Future of Music Coalition

John G Shedd Aquarium  
Kansas Bioscience Authority  
Kessler Foundation  
Kulanu  
Lance Armstrong Foundation  
Lynch Transit District  
Lafayette Hall Youth Services  
Lobbyists Committee Civil Rights Under La  
League of Women Voters of the US  
Liberty Science Center  
Library Copyright Alliance  
Light House International  
Lincoln Park Zoo  
Local Initiatives Support Corp  
Lymphoma Research Foundation  
Make It Right Foundation  
Maltz Museum of Jewish Heritage  
Mansfield Foundation  
MATCH Coalition  
MCNC  
Medical Library Assn  
MERS/Missouri Goodwill Industries  
Metropolitan Museum of Art  
Miami Museum of Science & Space Trans  
Miami Project to Cure Paralysis  
Michigan Research Institute  
Midpeninsula Regional Open Space Dist  
Military Child Education Coalition  
Missouri Botanical Garden  
Missouri Public Transit Assn  
Monterey Bay Aquarium  
Mote Marine Laboratory  
Muscular Dystrophy Assn  
Museum of Flight  
Museum of Latin American Art  
Museum of Science & Industry  
Museum of the City of New York  
My Turn Inc  
Mystic Marine Life Aquarium  
Mystic Seaport Museum  
National Aquarium in Baltimore  
National Aviary  
National Building Museum 10  
National Center for State Courts  
National Center for Victims of Crime

# # of Lobbyists (FY13)

# 12,351

# Lobbying Expenditures

Abyssinian Development Corp  
Ad Council  
Adler Planetarium & Astronomy Museum  
Afikim Foundation  
Alaska Sealife Center  
Alfalt International  
Alliance of Nonprofit Mailers  
Alliance to Protect Nantucket Sound  
Allies for Cherry Point's Tomorrow  
Alpha One Foundation  
American Assn of Law Libraries  
American Assn of Museums  
American Commodity Distribution Assn  
American Defense Council  
American Friends of Hebrew University  
American Hellenic Educ Progressive Assn  
American Library Assn  
American Museum of Natural History  
American Society of Plant Biologists  
American Tinnitus Assn  
American Vets Disabled for Life Members  
Americans for the Arts  
Americans United/Separation Church/State  
AmeriDream Inc  
Amistad America  
An Achievable Dream Inc  
Andre Agassi Charitable Foundation  
Appalachia Service Project  
Aquarium of the Pacific  
Arison Family Trust  
Arizona Science Center  
Asphalt Green  
Assn for Homeowners Across America  
Assn of Critical Care Transport  
Assn of Fundraising Professionals  
Attic Correctional Services  
August Wilson Cntr/African Amer Culture  
Austin Hill Country Conservancy  
Benetech Initiative  
Big Brothers/Big Sisters of America  
Bipartisan Advocacy Center  
Bipartisan Policy Center  
Bipartisan Policy Ctr Advocacy Network  
Boston Museum of Fine Arts  
Boston Museum of Science

Civil War Preservation Trust  
Cleveland Museum of Art  
Climate Protection Action Fund  
Cmte Supporting Democ & Justice Pakistan  
Coalition for Tax Fairness  
Coalition for the Homeless  
Common Cause  
Community for Agriculture  
Community Food Security Coalition  
Connected Nation Development Corp  
Connecticut Center/Science Exploration  
Consumer Alliance  
Corcoran Gallery of Art  
Corporate Voices for Working Families  
Corporate Center for Economic Development  
Council for Citizens Against Govt Waste  
Council on Foundations  
Crim Fitness Foundation  
Curt and Zheleznik's Fund  
Dahlia Boyer Gilman Ring  
DC Central Kitchen  
Democracy 21  
Denver Museum of Nature & Science  
Dialysis Patient Citizens  
Discovery Science Center  
Duane Morris Government Affairs  
Duluth Children's Museum  
ECMC Group  
Envision  
Families of Flight 93  
Federation of State Humanities Council  
Fermi Research Alliance  
Field Museum  
Figge Art Museum  
Fight Crime: Invest In Kids  
First Candle  
Folger Shakespeare Library  
Fort Wayne Allen County Economic  
Foundation for a Better Oregon  
Fraternal Order of Eagles  
Friends of Charities Assn  
Friends of the Griffith Observatory  
Friends of the World Food Program  
From the Top  
Future of Music Coalition

John G Shedd Aquarium  
Kansas Bioscience Authority  
Kessler Foundation  
Kulanu  
Lance Armstrong Foundation  
Lynch Transit District  
Lorraine Hall Youth Services  
Lobbyists Committee Civil Rights Under La  
League of Women Voters of the US  
Liberty Science Center  
Library Copyright Alliance  
Light House International  
Lincoln Park Zoo  
Local Initiatives Support Corp  
Lymphoma Research Foundation  
Make It Right Foundation  
Maltz Museum of Jewish Heritage  
Mansfield Foundation  
MATCH Coalition  
MCCNY  
Medical Library Assn  
MERS/Missouri Goodwill Industries  
Metropolitan Museum of Art  
Miami Museum of Science & Space Trans  
Miami Project to Cure Paralysis  
Michigan Research Institute  
Midpeninsula Regional Open Space Dist  
Military Child Education Coalition  
Missouri Botanical Garden  
Missouri Public Transit Assn  
Monterey Bay Aquarium  
Mote Marine Laboratory  
Muscular Dystrophy Assn  
Museum of Flight  
Museum of Latin American Art  
Museum of Science & Industry  
Museum of the City of New York  
My Turn Inc  
Mystic Marine Life Aquarium  
Mystic Seaport Museum  
National Aquarium in Baltimore  
National Aviary  
National Building Museum 10  
National Center for State Courts  
National Center for Victims of Crime

Abyssinian Development Corp  
Ad Council  
Adler Planetarium & Astronomy Museum  
Afikim Foundation  
Alaska Sealife Center  
Alfalt International  
Alliance of Nonprofit Mailers  
Alliance to Protect Nantucket Sound  
Allies for Cherry Point's Tomorrow  
Alpha One Foundation  
American Assn of Law Libraries  
American Assn of Museums  
American Commodity Distribution Assn  
American Defense Council  
American Friends of Hebrew University  
American Hellenic Educ Progressive Assn  
American Library Assn  
American Museum of Natural History  
American Society of Plant Biologists  
American Tinnitus Assn  
American Vets Disabled for Life Members  
Americans for the Arts  
Americans United/Separation Church/State  
AmeriDream Inc  
Amistad America  
An Achievable Dream Inc  
Andre Agassi Charitable Foundation  
Appalachia Service Project  
Aquarium of the Pacific  
Arison Family Trust  
Arizona Science Center  
Asphalt Green  
Assn for Homeowners Across America  
Assn of Critical Care Transport  
Assn of Fundraising Professionals  
Attic Correctional Services  
August Wilson Cntr/African Amer Culture  
Austin Hill Country Conservancy  
Benetech Initiative  
Big Brothers/Big Sisters of America  
Bipartisan Advocacy Center  
Bipartisan Policy Center  
Bipartisan Policy Ctr Advocacy Network  
Boston Museum of Fine Arts  
Boston Museum of Science

Civil War Preservation Trust  
Cleveland Museum of Art  
Climate Protection Action Fund  
Cmte Supporting Democ & Justice Pakistan  
Coalition for Tax Fairness  
Coalition for the Homeless  
Common Cause  
Community for Agriculture  
Community Food Security Coalition  
Connected Nation Development Corp  
Connecticut Center/Science Exploration  
Coryell Alliance  
Corcoran Gallery of Art  
Corporate Voices for Working Families  
Copper River Economic Development  
Council for Citizens Against Govt Waste  
Council on Foundations  
Crim Fitness Foundation  
Curtis Nzhelers Fund  
Dahlia Boyles Gilchrist Ring  
DC Central Kitchen  
Democracy 21  
Denver Museum of Nature & Science  
Dylis Patient Citizens  
Discovery Science Center  
Drane Institute's Government Mail  
Duluth Children's Museum  
EOMC Group  
Envision  
Families of Flight 93  
Federation of State Humanities Council  
Fermi Research Alliance  
Field Museum  
Figge Art Museum  
Fight Crime: Invest In Kids  
First Candle  
Folger Shakespeare Library  
Fort Wayne Allen County Economic  
Foundation for a Better Oregon  
Fraternal Order of Eagles  
Friends of Charities Assn  
Friends of the Griffith Observatory  
Friends of the World Food Program  
From the Top  
Future of Music Coalition

John G Shedd Aquarium  
Kansas Bioscience Authority  
Kessler Foundation  
Kulanu  
Lance Armstrong Foundation  
Lynch Transit District  
Lorraine Hall Youth Services  
Lobbyists Committee Civil Rights Under La  
League of Women Voters of the US  
Liberty Science Center  
Library Copyright Alliance  
Light House International  
Lincoln Park Zoo  
Local Initiatives Support Corp  
Lymphoma Research Foundation  
Make It Right Foundation  
Maltz Museum of Jewish Heritage  
Mansfield Foundation  
MATCH Coalition  
MCCNY  
Medical Library Assn  
MERS/Missouri Goodwill Industries  
Metropolitan Museum of Art  
Miami Museum of Science & Space Trans  
Miami Project to Cure Paralysis  
Michigan Research Institute  
Midpeninsula Regional Open Space Dist  
Military Child Education Coalition  
Missouri Botanical Garden  
Missouri Public Transit Assn  
Monterey Bay Aquarium  
Mote Marine Laboratory  
Muscular Dystrophy Assn  
Museum of Flight  
Museum of Latin American Art  
Museum of Science & Industry  
Museum of the City of New York  
My Turn Inc  
Mystic Marine Life Aquarium  
Mystic Seaport Museum  
National Aquarium in Baltimore  
National Aviary  
National Building Museum 10  
National Center for State Courts  
National Center for Victims of Crime

# of Lobbyists (FY13)

12,351

Lobbying Expenditures

\$3.23 billion



Abyssinian Development Corp  
Ad Council  
Adler Planetarium & Astronomy Museum  
Afikim Foundation  
Alaska Sealife Center  
Alfalt International  
Alliance of Nonprofit Mailers  
Alliance to Protect Nantucket Sound  
Allies for Cherry Point's Tomorrow  
Alpha One Foundation  
American Assn of Law Libraries  
American Assn of Museums  
American Commodity Distribution Assn  
American Defense Council  
American Friends of Hebrew University  
American Hellenic Educ Progressive Assn  
American Library Assn  
American Museum of Natural History  
American Society of Plant Biologists  
American Tinnitus Assn  
American Vets Disabled for Life Members  
Americans for the Arts  
Americans United/Separation Church/State  
AmeriDream Inc  
Amistad America  
An Achievable Dream Inc  
Andre Agassi Charitable Foundation  
Appalachia Service Project  
Aquarium of the Pacific  
Arison Family Trust  
Arizona Science Center  
Asphalt Green  
Assn for Homeowners Across America  
Assn of Critical Care Transport  
Assn of Fundraising Professionals  
Attic Correctional Services  
August Wilson Cntr/African Amer Culture  
Austin Hill Country Conservancy  
Benetech Initiative  
Big Brothers/Big Sisters of America  
Bipartisan Advocacy Center  
Bipartisan Policy Center  
Bipartisan Policy Ctr Advocacy Network  
Boston Museum of Fine Arts  
Boston Museum of Science

Civil War Preservation Trust  
Cleveland Museum of Art  
Climate Protection Action Fund  
Cmte Supporting Democ & Justice Pakistan  
Coalition for Tax Fairness  
Coalition for the Homeless  
Common Cause  
Community Org for Agriculture  
Community Food Security Coalition  
Connected Nation Development Corp  
Connecticut Center/Science Exploration  
Coryell Alliance  
Corcoran Gallery of Art  
Corporate Voices for Working Families  
Copper River Economic Development  
Council for Citizens Against Govt Waste  
Council on Foundations  
Crim Fitness Foundation  
Cura Azheilers Fund  
Dadot Boy Scouts Group  
DC Central Kitchen  
Democracy 21  
Denver Museum of Nature & Science  
Dialysis Patient Citizens  
Discovery Science Center  
Diane Ivers Government Mail  
Duluth Children's Museum  
EOMC Group  
Envision  
Families of Flight 93  
Federation of State Humanities Council  
Farm Research Alliance  
Field Research Institute  
Egg & Milk Museum  
Fight Crime: Invest in Kids  
First Candle  
Folger Shakespeare Library  
Fort Wayne Allen County Economic  
Foundation for a Better Oregon  
Fraternal Order of Eagles  
Friends of Charities Assn  
Friends of the Griffith Observatory  
Friends of the World Food Program  
From the Top  
Future of Music Coalition

John G Shedd Aquarium  
Kansas Bioscience Authority  
Kessler Foundation  
Kulanu  
Lance Armstrong Foundation  
Lynch Transit District  
Lorraine Hall Youth Services  
Lobbyists Committee Civil Rights Under La  
League of Women Voters of the US  
Liberty Science Center  
Library Copyright Alliance  
Light House International  
Lincoln Park Zoo  
Local Initiatives Support Corp  
Lymphoma Research Foundation  
Make It Right Foundation  
Maltz Museum of Jewish Heritage  
Mansfield Foundation  
MATCH Coalition  
MCCNY  
Medical Library Assn  
MERS/Missouri Goodwill Industries  
Metropolitan Museum of Art  
Miami Museum of Science & Space Trans  
Miami Project to Cure Paralysis  
Michigan Research Institute  
Midpeninsula Regional Open Space Dist  
Military Child Education Coalition  
Missouri Botanical Garden  
Missouri Public Transit Assn  
Monterey Bay Aquarium  
Mote Marine Laboratory  
Muscular Dystrophy Assn  
Museum of Flight  
Museum of Latin American Art  
Museum of Science & Industry  
Museum of the City of New York  
My Turn Inc  
Mystic Marine Life Aquarium  
Mystic Seaport Museum  
National Aquarium in Baltimore  
National Aviary  
National Building Museum 10  
National Center for State Courts  
National Center for Victims of Crime

# of Lobbyists (FY13)

12,351

Lobbying Expenditures

\$3.23 billion

Working "S&T"

Abyssinian Development Corp  
Ad Council  
Adler Planetarium & Astronomy Museum  
Afikim Foundation  
Alaska Sealife Center  
Alfalit International  
Alliance of Nonprofit Mailers  
Alliance to Protect Nantucket Sound  
Allies for Cherry Point's Tomorrow  
Alpha One Foundation  
American Assn of Law Libraries  
American Assn of Museums  
American Commodity Distribution Assn  
American Defense Council  
American Friends of Hebrew University  
American Hellenic Educ Progressive Assn  
American Library Assn  
American Museum of Natural History  
American Society of Plant Biologists  
American Tinnitus Assn  
American Vets Disabled for Life Members  
Americans for the Arts  
Americans United/Separation Church/State  
AmeriDream Inc  
Amistad America  
An Achievable Dream Inc  
Andre Agassi Charitable Foundation  
Appalachia Service Project  
Aquarium of the Pacific  
Arison Family Trust  
Arizona Science Center  
Asphalt Green  
Assn for Homeowners Across America  
Assn of Critical Care Transport  
Assn of Fundraising Professionals  
Attic Correctional Services  
August Wilson Cntr/African Amer Culture  
Austin Hill Country Conservancy  
Benetech Initiative  
Big Brothers/Big Sisters of America  
Bipartisan Advocacy Center  
Bipartisan Policy Center  
Bipartisan Policy Ctr Advocacy Network  
Boston Museum of Fine Arts  
Boston Museum of Science

Civil War Preservation Trust  
Cleveland Museum of Art  
Climate Protection Action Fund  
Cmte Supporting Democ & Justice Pakistan  
Coalition for Tax Fairness  
Coalition for the Homeless  
Common Cause  
Community Org for Agriculture  
Community Food Security Coalition  
Connected Nation Development Corp  
Connecticut Center/Science Exploration  
Coryell Alliance  
Crocoran Gallery of Art  
Corporate Voices for Working Families  
Copper River Economic Development  
Council for Citizens Against Govt Waste  
Council on Foundations  
Crim Fitness Foundation  
Cura Azheilers Fund  
Dadot Boy Scouts Group  
DC Central Kitchen  
Democracy 21  
Denver Museum of Nature & Science  
Dialysis Patient Citizens  
Discovery Science Center  
Diane McLean's Government Mail  
Duluth Children's Museum  
EOMC Group  
Envision  
Families of Flight 93  
Federation of State Humanities Council  
Farm Research Alliance  
Field Research Institute  
Egg & Milk Museum  
Fight Crime: Invest in Kids  
First Candle  
Folger Shakespeare Library  
Fort Wayne Van County Economic  
Foundation for Better Oregon  
Fraternal Order of Eagles  
Friends of Charities Assn  
Friends of the Griffith Observatory  
Friends of the World Food Program  
From the Top  
Future of Music Coalition

John G Shedd Aquarium  
Kansas Bioscience Authority  
Kessler Foundation  
Kulanu  
Lance Armstrong Foundation  
Lynchburg Transit District  
Lorraine Hall Youth Services  
Lobbyists Committee Civil Rights Under La  
League of Women Voters of the US  
Liberty Science Center  
Library Copyright Alliance  
Light House International  
Lincoln Park Zoo  
Local Initiatives Support Corp  
Lymphoma Research Foundation  
Make It Right Foundation  
Maltz Museum of Jewish Heritage  
Mansfield Foundation  
MATCH Coalition  
MCCNY  
Medical Library Assn  
MERS/Missouri Goodwill Industries  
Metropolitan Museum of Art  
Miami Museum of Science & Space Trans  
Miami Project to Cure Paralysis  
Michigan Research Institute  
Midpeninsula Regional Open Space Dist  
Military Child Education Coalition  
Missouri Botanical Garden  
Missouri Public Transit Assn  
Monterey Bay Aquarium  
Mote Marine Laboratory  
Muscular Dystrophy Assn  
Museum of Flight  
Museum of Latin American Art  
Museum of Science & Industry  
Museum of the City of New York  
My Turn Inc  
Mystic Marine Life Aquarium  
Mystic Seaport Museum  
National Aquarium in Baltimore  
National Aviary  
National Building Museum 10  
National Center for State Courts  
National Center for Victims of Crime

# of Lobbyists (FY13)

12,351

Lobbying Expenditures

\$3.23 billion

Working "S&T"

417

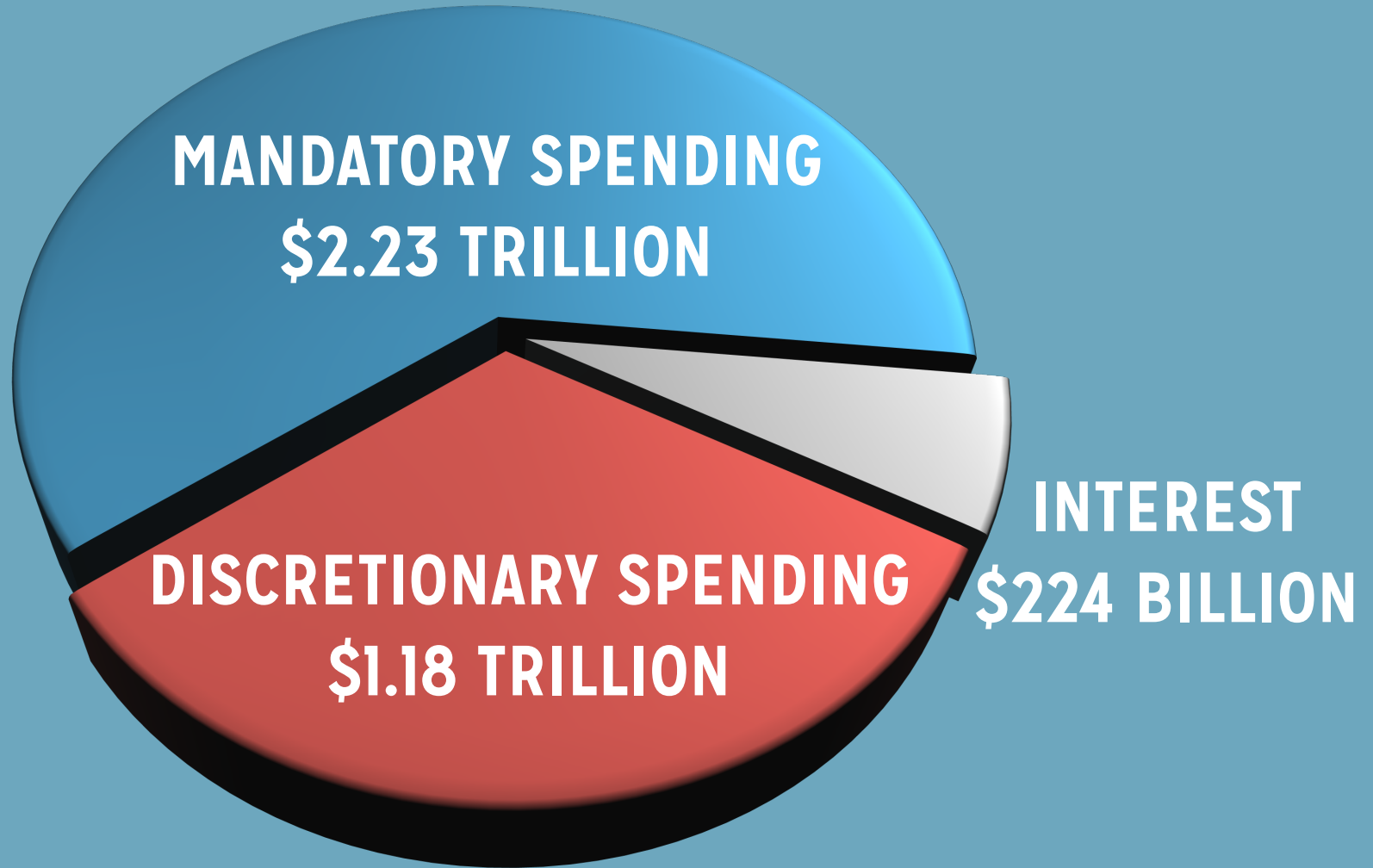


# FY 2014 FEDERAL BUDGET



**\$3.6 TRILLION**

# FY 2014 FEDERAL BUDGET



# FY 2014 FEDERAL BUDGET



# FY 2014 FEDERAL BUDGET



**DISCRETIONARY SPENDING**  
**\$1.18 TRILLION**

# FY 2014 FEDERAL BUDGET



**DISCRETIONARY SPENDING**  
**\$1.18 TRILLION**

# FY 2014 FEDERAL BUDGET



Agriculture

CJS

Defense

Energy and Water

Financial Services

Homeland Security

Interior and Environment

Labor/HHS/Education

Legislative Branch

Military/Veterans

State/Foreign Ops

Transportation/HUD

# APPROPRIATIONS IS A ZERO-SUM GAME

*Commerce, Justice, Science Bill*

- National Science Foundation
- NIST
- NOAA
- NASA
- FBI / Dept. of Justice
- Census

# NSF, COPS OR SPACESHIPS?

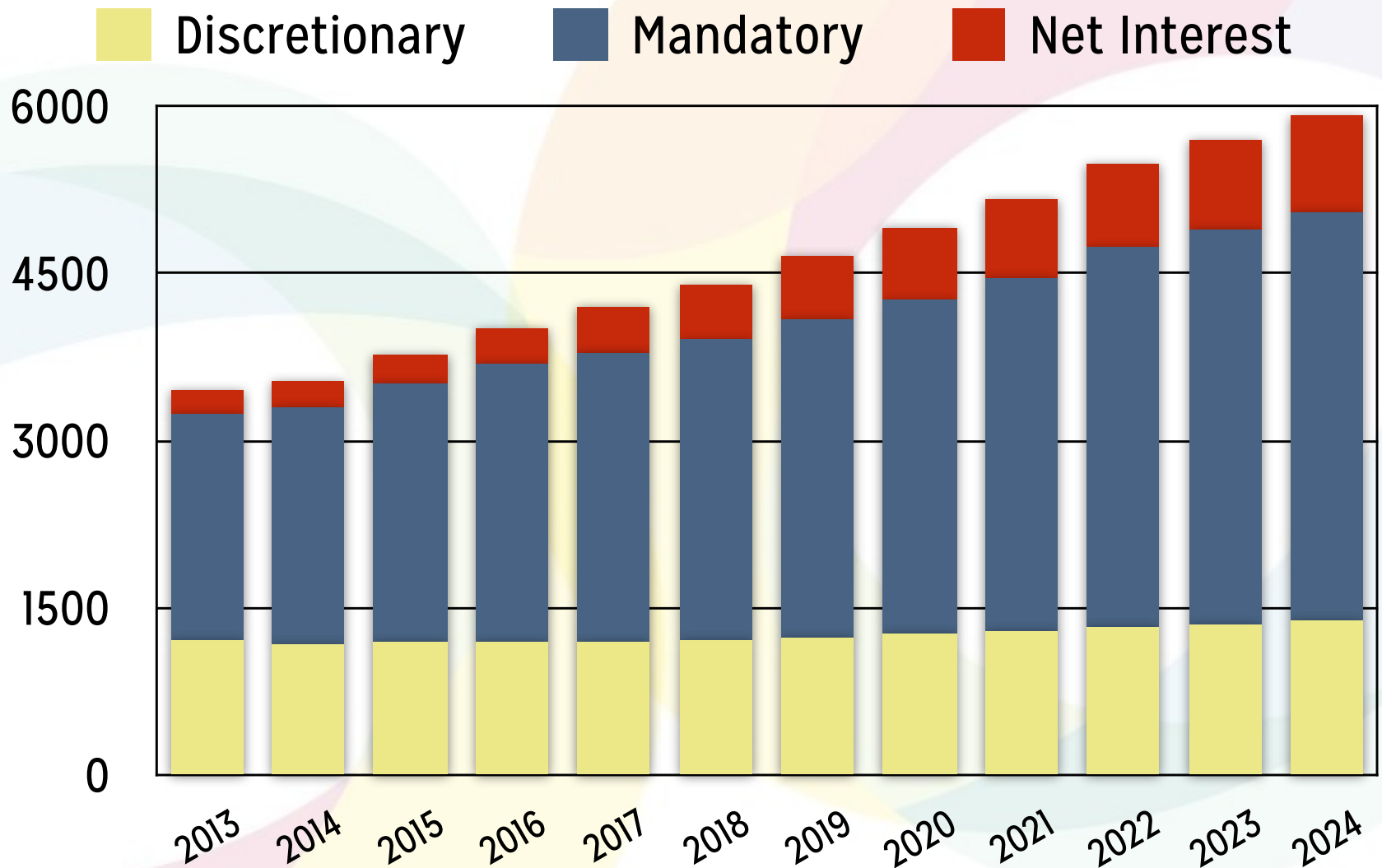




# **THE CHALLENGES WE FACE**

# FISCAL REALITIES...

# Growth in Mandatory Spending vs. Discretionary



# Running the government on 8¢

BY 2020, FOUR BIG ITEMS COULD SUCK UP 92% OF TAX DOLLARS

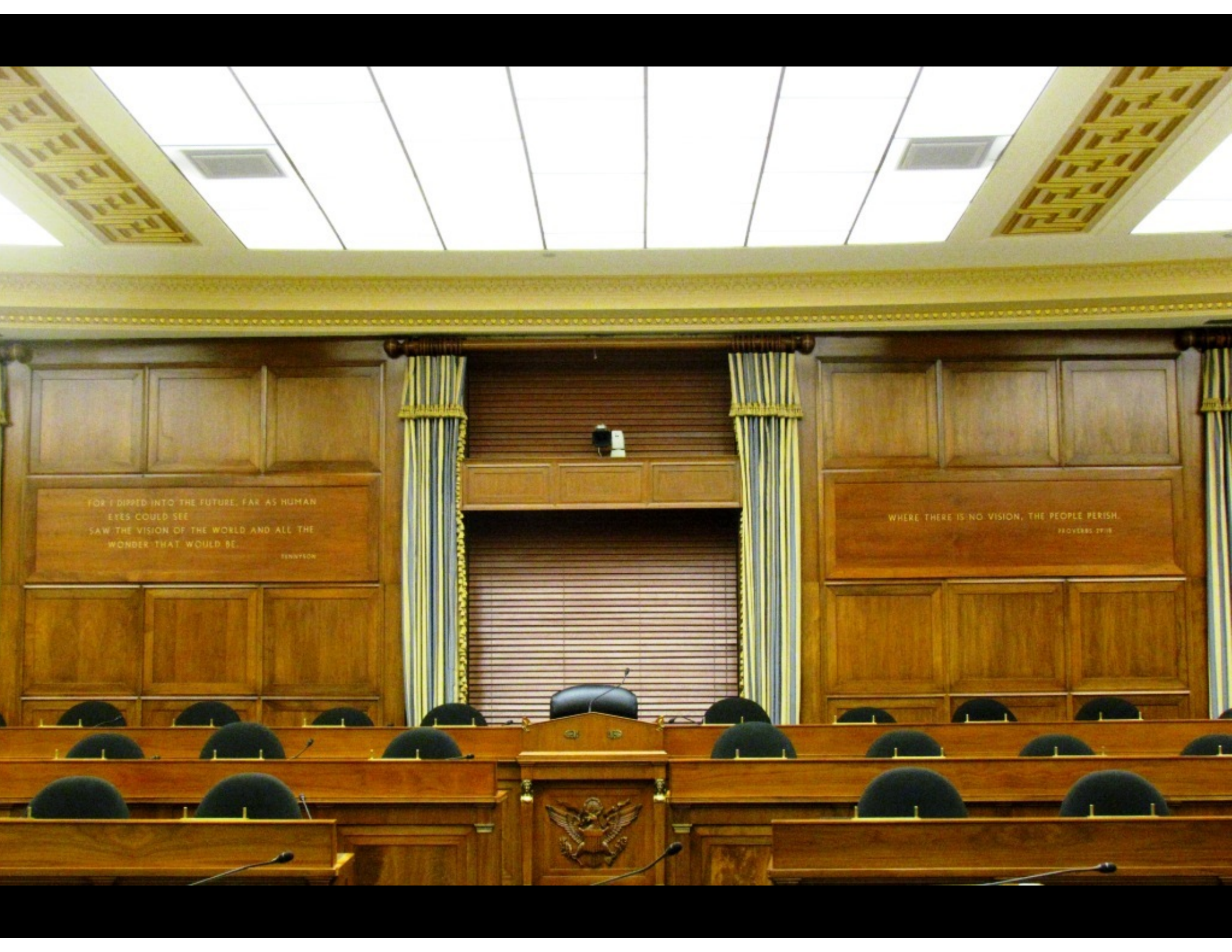


**EVERYTHING ELSE** Children's nutrition, Border security, Food safety and inspection, Disaster relief, Forest service, Drug Enforcement Administration, Public housing, IRS, Animal & plant health inspection, Federal courts, Bureau of Indian Affairs, NASA, Army, National Endowment for the Arts, Air Force, Federal student loans, Marines, Rural development, U.S. Coast Guard, Food stamps, National park service, Income assistance, Family services, Research and development, U.S. Geological Survey, Environmental Protection Agency, Centers for Disease Control, FEMA, Immigration and customs, Secret Service, FAA, Housing for the elderly, Federal Railroad Administration, Navy, Bureau of Land Management, Federal prison system, Peace Corps, FCC, State Department, National Science Foundation, Congress, Fish and Wildlife Service, White House, SEC, Smithsonian Institute, Small Business Administration, FBI, Federal Highway Admin ■ ■ ■

PHOTO: JOHN R. COUGHLIN/CNNMONEY. SOURCE: GOVERNMENT ACCOUNTABILITY OFFICE

**ATTITUDES HAVE CHANGED**





FOR I DIPPED INTO THE FUTURE, FAR AS HUMAN  
EYES COULD SEE  
SAW THE VISION OF THE WORLD AND ALL THE  
WONDER THAT WOULD BE.  
TENNYSON

WHERE THERE IS NO VISION, THE PEOPLE PERISH.  
PROVERBS 29:18



- Comity and bipartisanship on the committee probably peaked in about 2007-8 with *Gathering Storm* and the America COMPETES Act
- Breakdown started in earnest in 2010, during reauthorization of COMPETES
- GOP tried to kill bill to deny Dems a win in an election year

- In 2012, Sen. Tom Coburn attacked NSF as wasteful for “silly-sounding” research
- In 2013, Coburn/McCain and Cantor/L. Smith attacked NSF over political science and social science funding
- L. Smith attacks Dept. of Energy over Climate Change and Sustainability research
- L. Smith amends CJS to target SBE



## AMERICA COMPETES

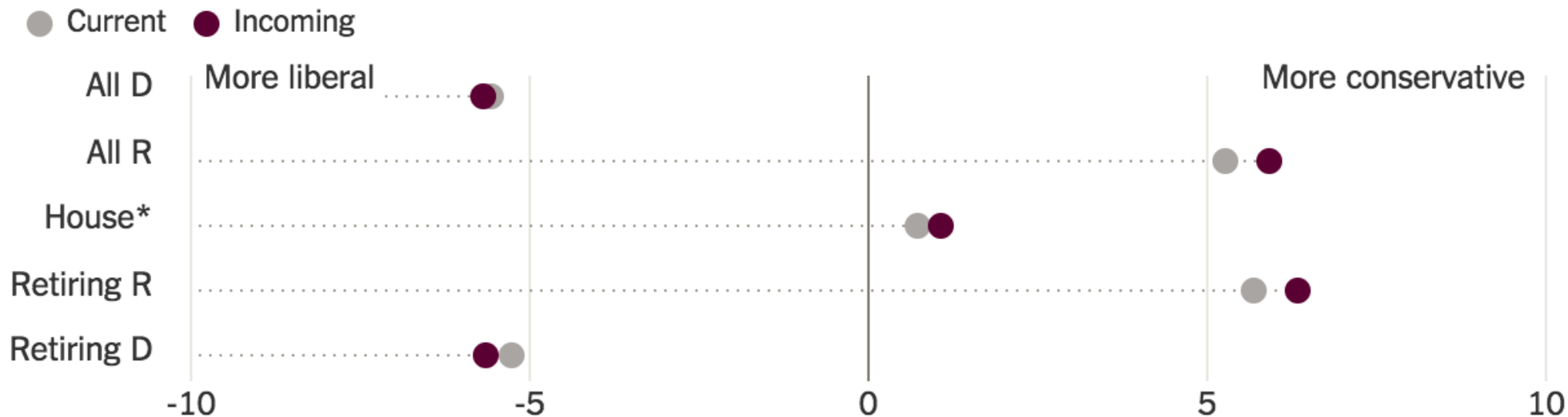
- FIRST Act of 2014 -> America COMPETES Reauthorization Act of 2015
- NSF “Accountability”
- Modest increases for computing research and other “hard science” accounts
- Specific cuts to SBE, GEO
- Energy R&D Title similarly partisan

## AMERICA COMPETES

- Marked up and passed out of committee on April 22nd
- Straight party-line vote
- Uncertain future...
- CRA opposed

- Exodus of experienced GOP staffers
- Things could get worse

- Exodus of experienced GOP staffers
- Things could get worse



Fourteen seats remained uncalled. Scores for retiring lawmakers are for seats won by the same party.

Source: Crowdpac, Associated Press

## CONGRESS IS MORE POLARIZED THAN EVER

- **Not a single** Democratic Senator was more conservative than any GOPer. Not a single GOP Senator is more liberal than any Dem.
- The House is equally polarized, with **only five GOPers** ranking more liberal than the most conservative Dem, and only four Dems more conservative than the most liberal Republican.

From a 2011 National Journal Study of the 2010 election cycle.

## CONGRESS IS MORE POLARIZED THAN EVER

- Of the 98 Democrats who had the most middle-of-the-road voting records in the last Congress, **55** of their seats are now in GOP hands.

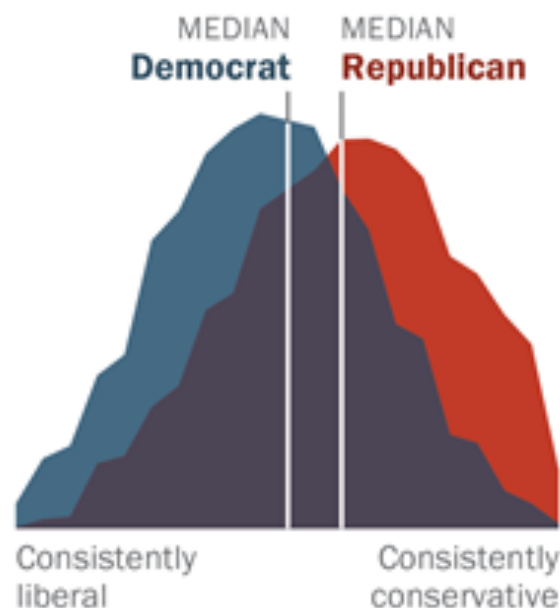
From a 2011 National Journal Study of the 2010 election cycle.

---

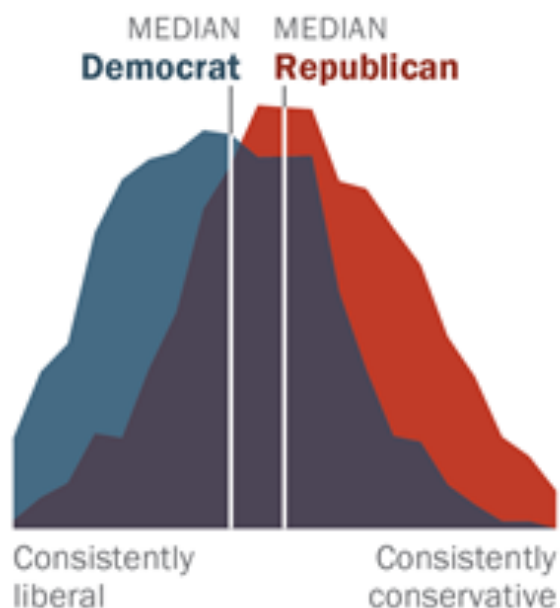
## Democrats and Republicans More Ideologically Divided than in the Past

*Distribution of Democrats and Republicans on a 10-item scale of political values*

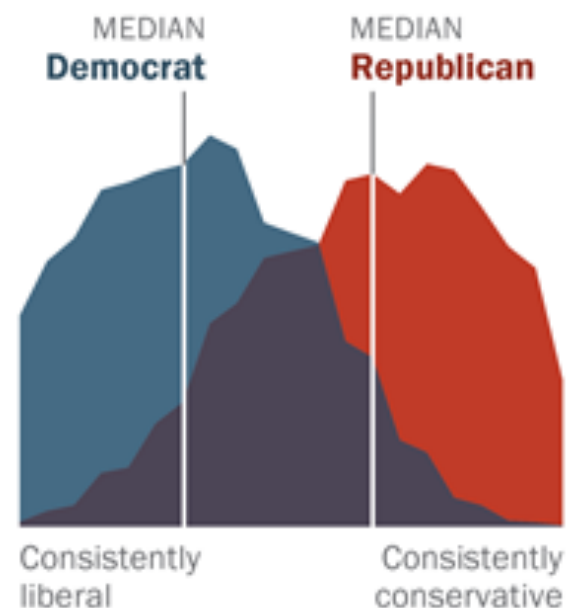
**1994**



**2004**



**2014**



Source: 2014 Political Polarization in the American Public

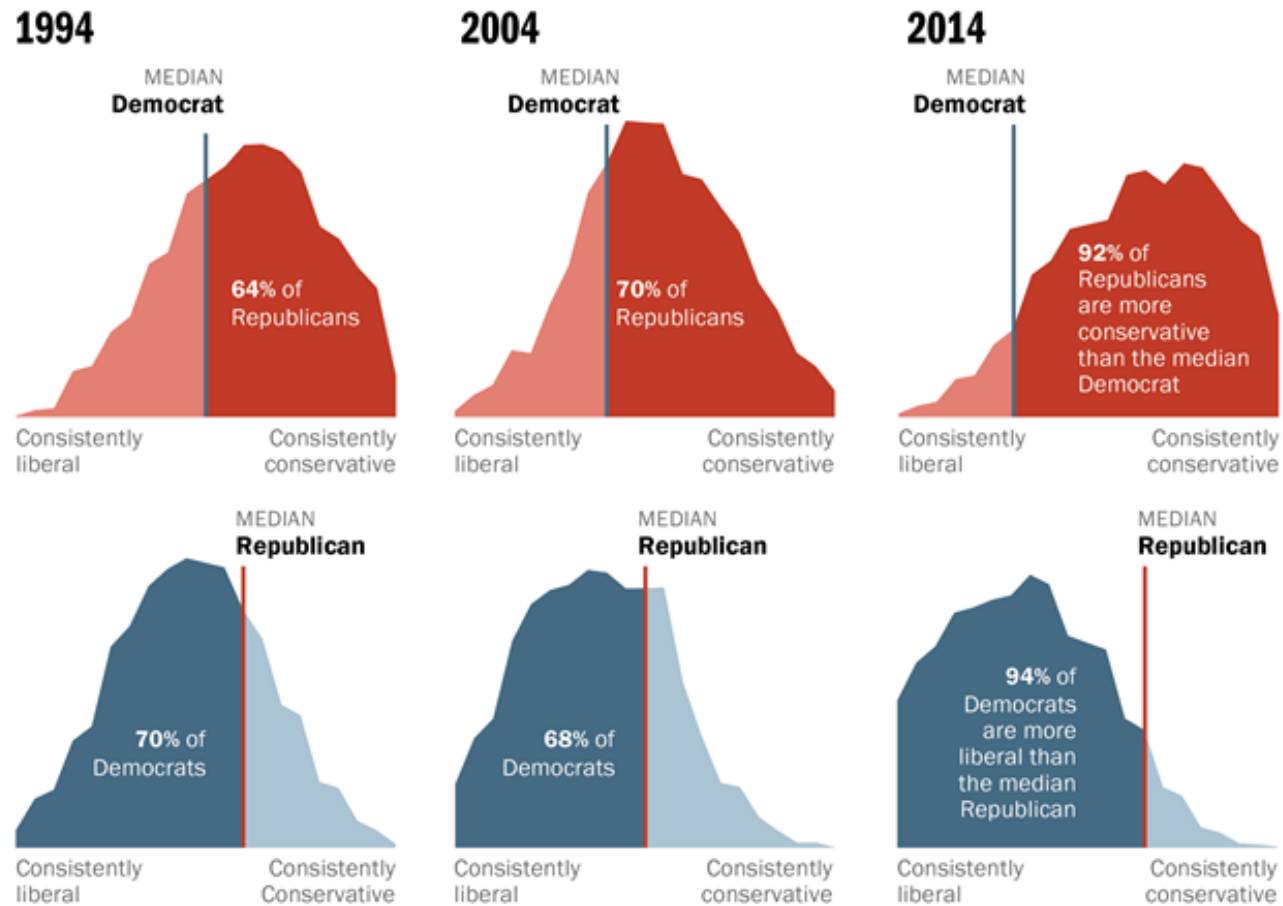
Notes: Ideological consistency based on a scale of 10 political values questions (see Appendix A). The blue area in this chart represents the ideological distribution of Democrats; the red area of Republicans. The overlap of these two distributions is shaded purple. Republicans include Republican-leaning independents; Democrats include Democratic-leaning independents (see Appendix B).

**PEW RESEARCH CENTER**

---

## Republicans Shift to the Right, Democrats to the Left

*Distribution of Republicans and Democrats on a 10-item scale of political values*



Source: 2014 Political Polarization in the American Public

Notes: Ideological consistency based on a scale of 10 political values questions (see Appendix A). Republicans include Republican-leaning independents; Democrats include Democratic-leaning independents (see Appendix B).

PEW RESEARCH CENTER

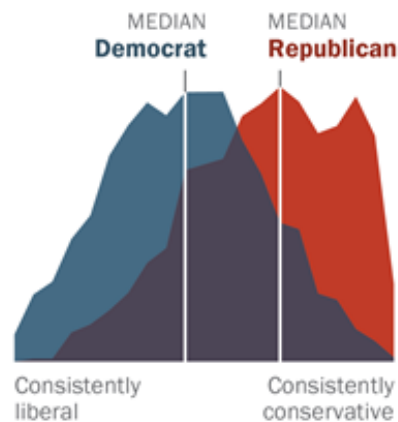


## Polarization Surges Among the Politically Engaged

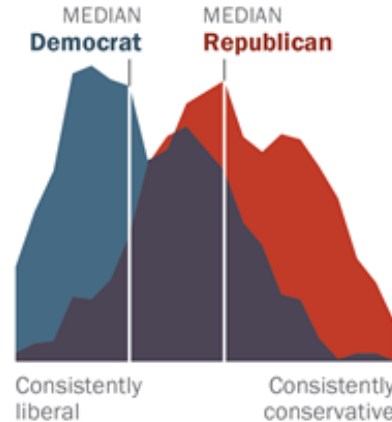
*Distribution of Democrats and Republicans on a 10-item scale of political values, by level of political engagement*

### Among the politically engaged

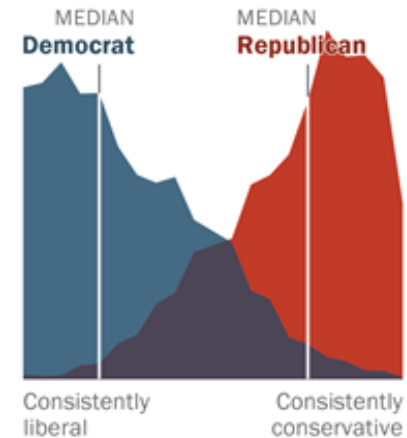
1994



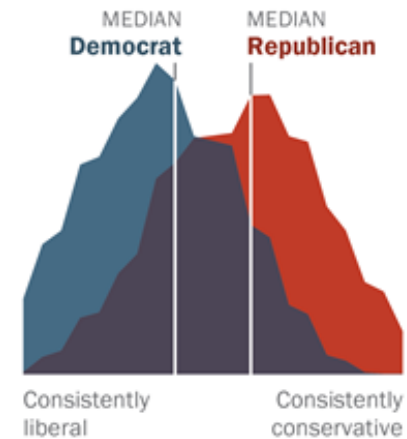
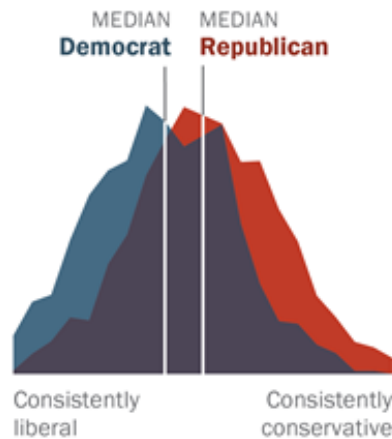
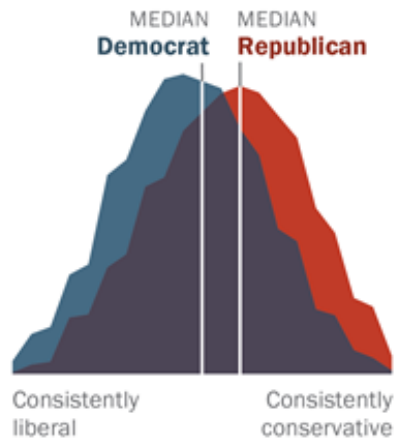
2004



2014



### Among the less engaged



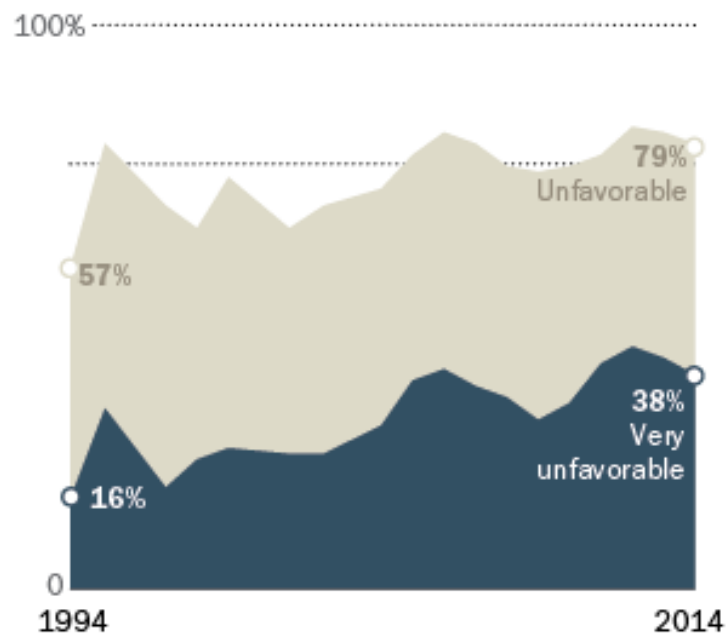
Source: 2014 Political Polarization in the American Public

Notes: Ideological consistency based on a scale of 10 political values questions (see Appendix A). Republicans include Republican-leaning independents; Democrats include Democratic-leaning independents (see Appendix B). Politically engaged are defined as those who are registered to vote, follow government and public affairs most of the time and say they vote always or nearly always.

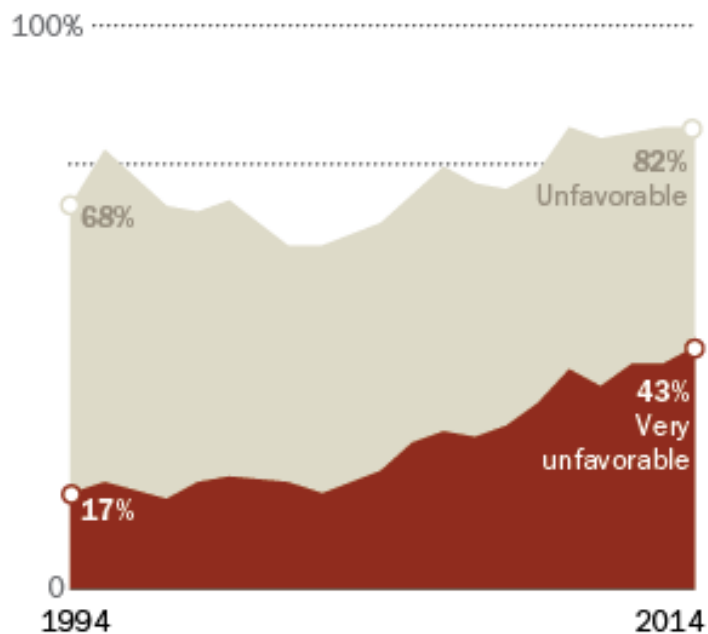
PEW RESEARCH CENTER

## A Rising Tide of Mutual Antipathy

### Democratic attitudes about the Republican Party



### Republican attitudes about the Democratic Party



Source: 2014 Political Polarization in the American Public

Notes: Republicans include Republican-leaning independents; Democrats include Democratic-leaning independents.

PEW RESEARCH CENTER

**SO THE CHALLENGES ARE DAUNTING**

**AND WE HAVE A MUCH MORE LIMITED TOOL BOX...**



**FORTUNATELY, WE'VE GOT A PRETTY GOOD STORY**

# TALKING POINTS



## INFORMATION TECHNOLOGY R&D AND U.S. INNOVATION

- **Advances in information technology are transforming all aspects of our lives:** commerce, education, employment, health care, manufacturing, government, national security, communications, entertainment, science, and engineering.
  - **Advances in information technology also drive our economy** – both directly (the growth of the IT sector itself) and in productivity gains across the economy. Advances in computing are enabling innovation in all fields.
  - **The history of innovation in computing is impressive, but the future opportunities are even more compelling:** the future of networking, revolutionizing transportation, personalized education, powering the smart grid, empowering the developing world, improving health care, enabling advanced manufacturing, driving advances in *all* fields of science and engineering.
- It's impossible to imagine a field with greater opportunity to change the world.**
- **The IT R&D ecosystem is crucial to continued innovation in IT, and federal support is at the heart of that ecosystem.** Essentially every aspect of IT upon which we rely today bears the stamp of federal support.

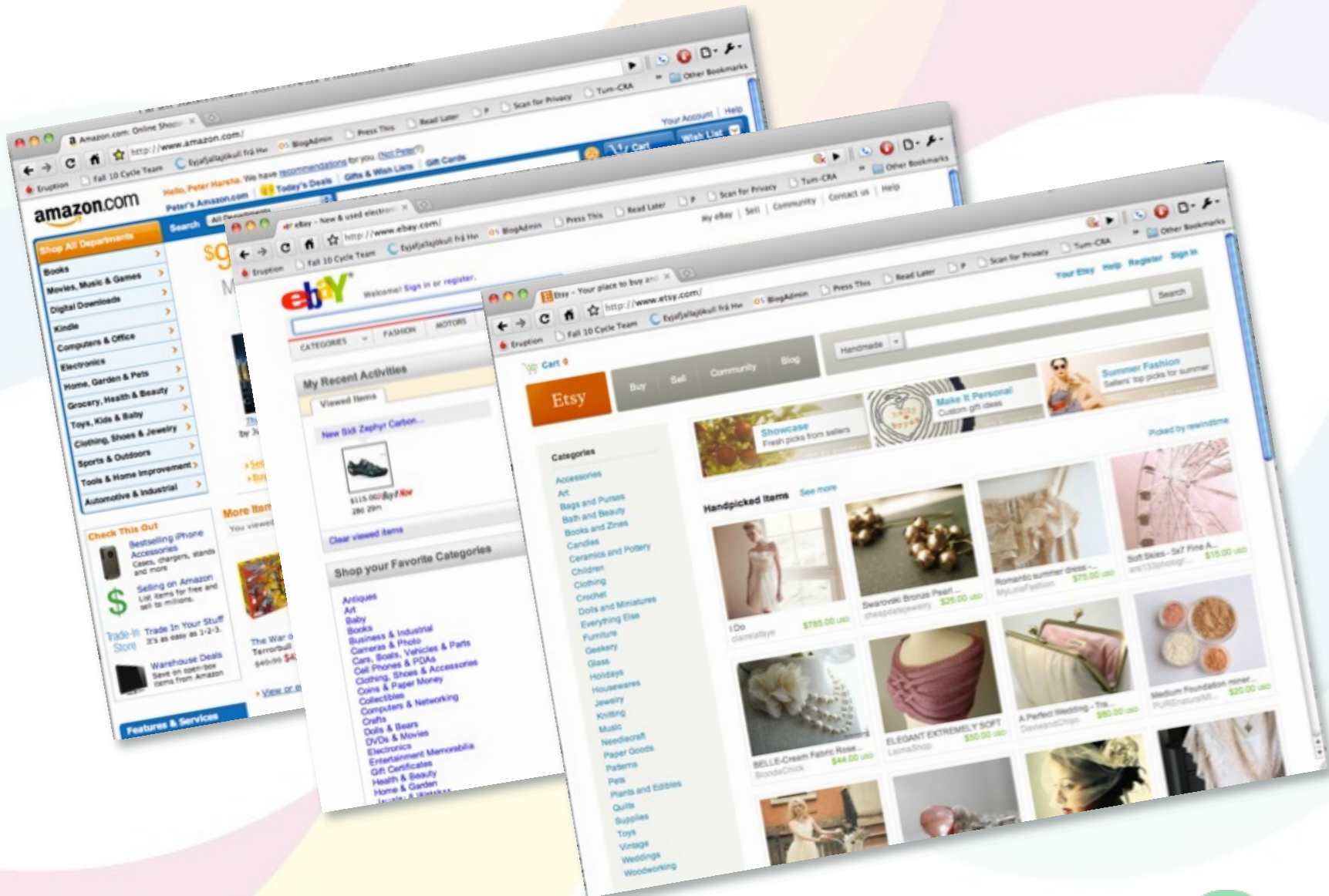
*“In order to sustain and improve our quality of life, it is crucial that the United States continue to innovate more rapidly and more creatively than other countries in important areas of IT. Only by continuing to invest in core IT science and technology will we continue to reap such enormous societal benefits in the decades to come.”*

– President’s Council of Advisors for Science and Technology  
(in *Designing a Digital Future*, December 2010)

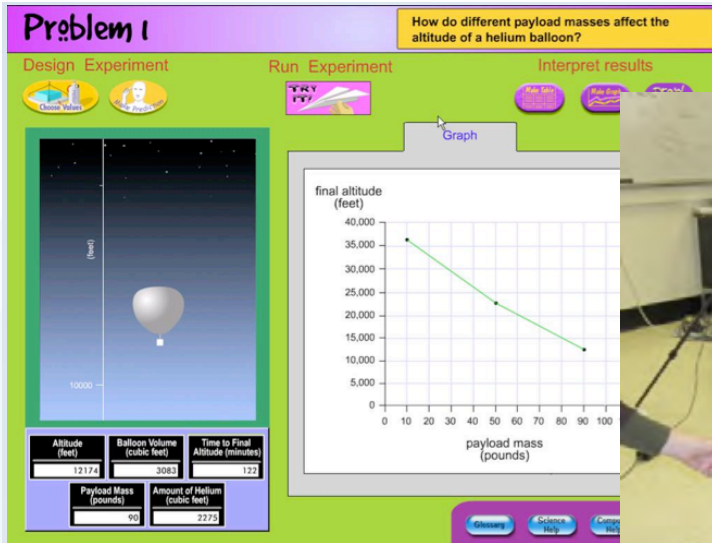


**Advances in IT are transforming  
all aspects of our lives**

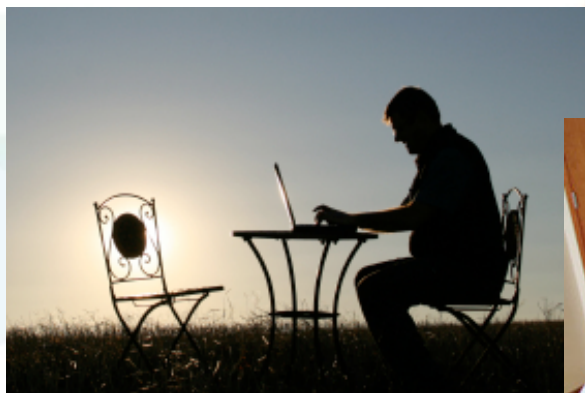
Conduct commerce...







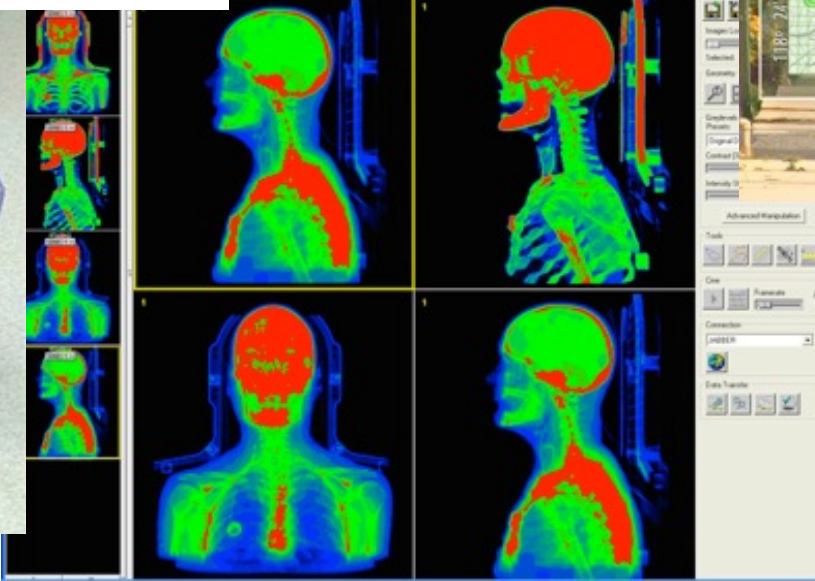
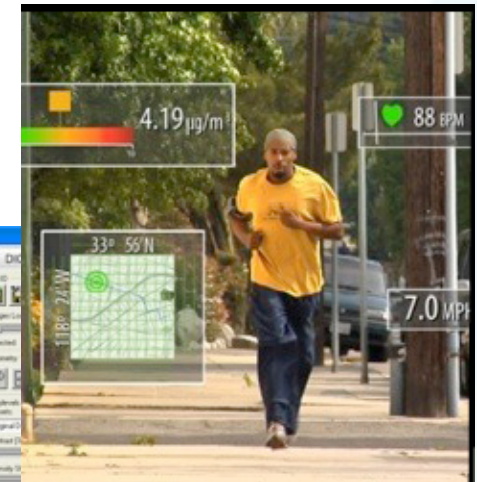
...how we learn...



...our employment...

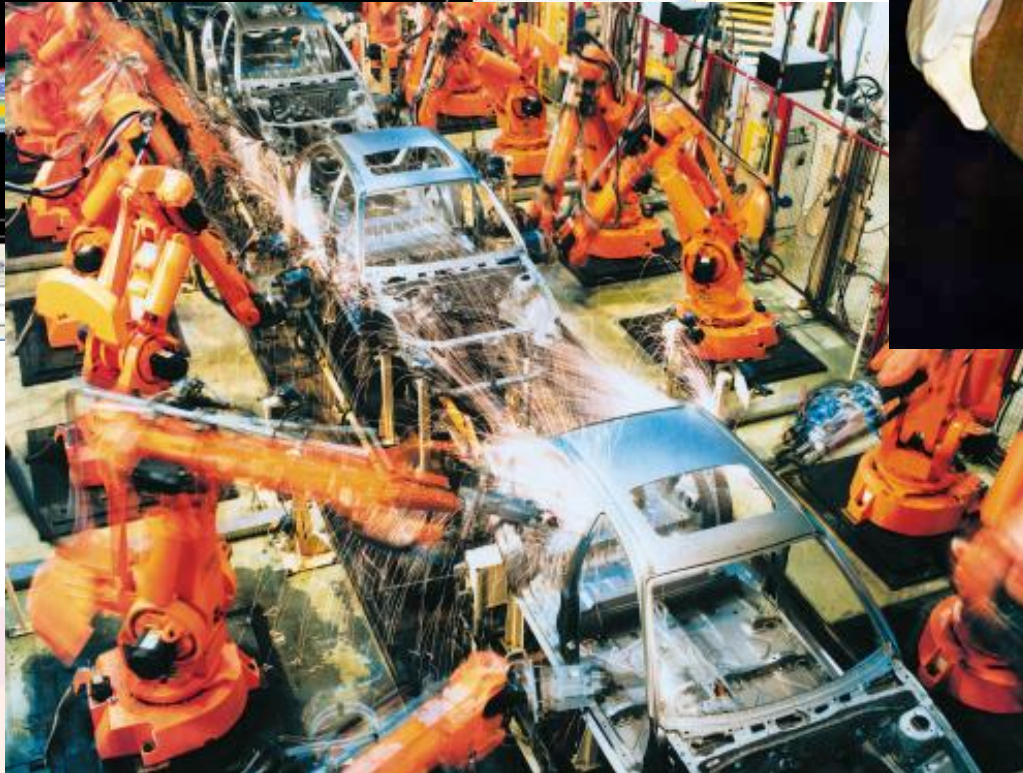
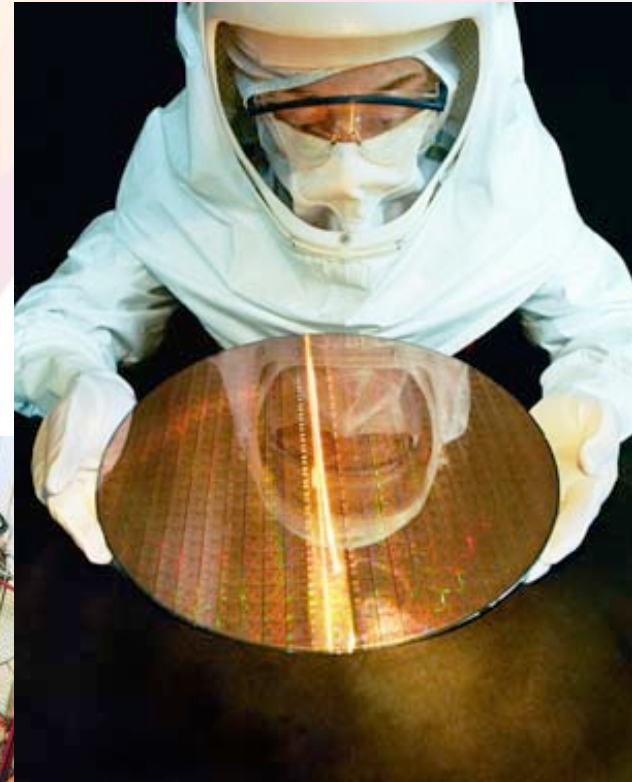
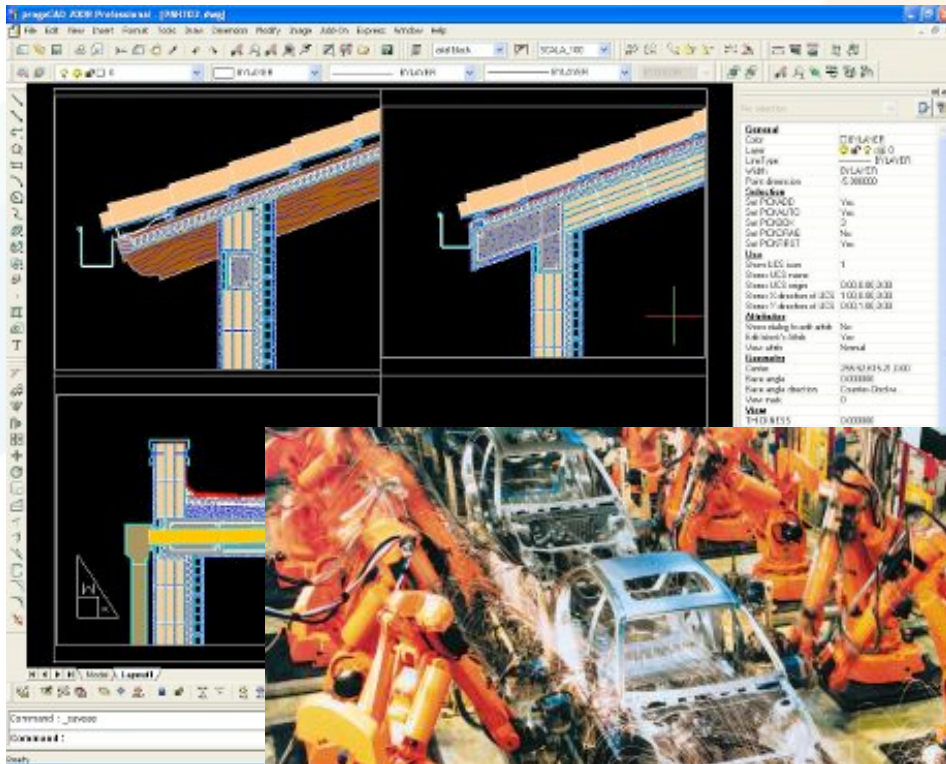


# ...our health care...





# ...how we manufacture...

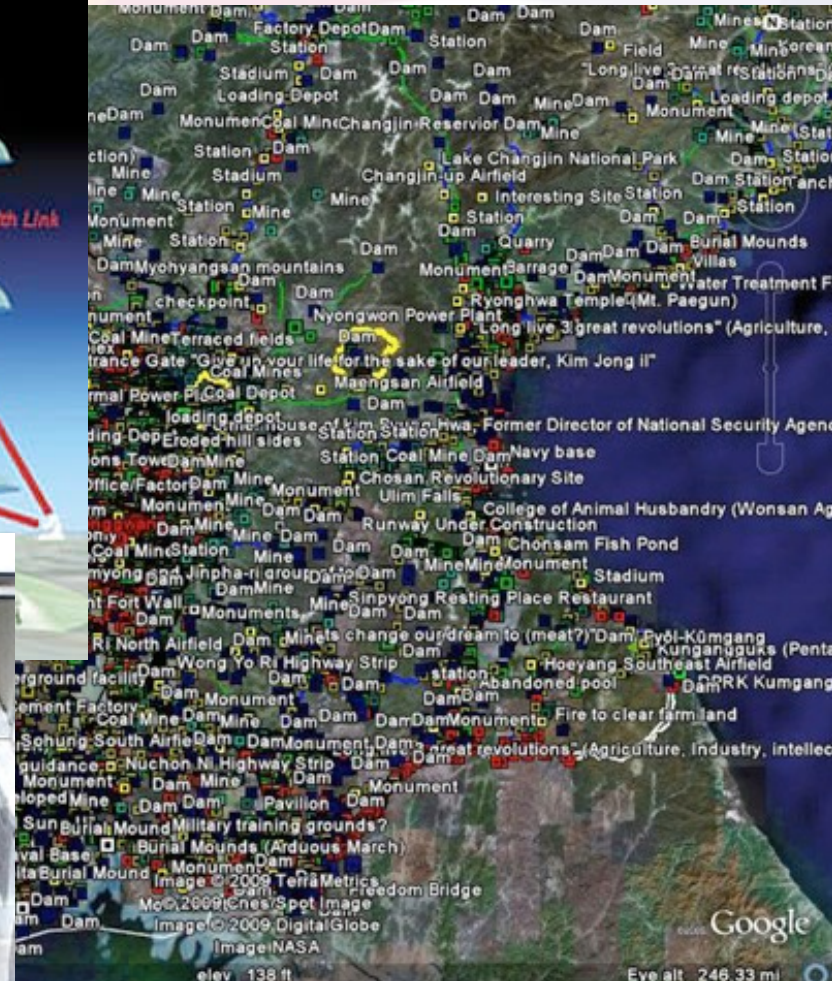
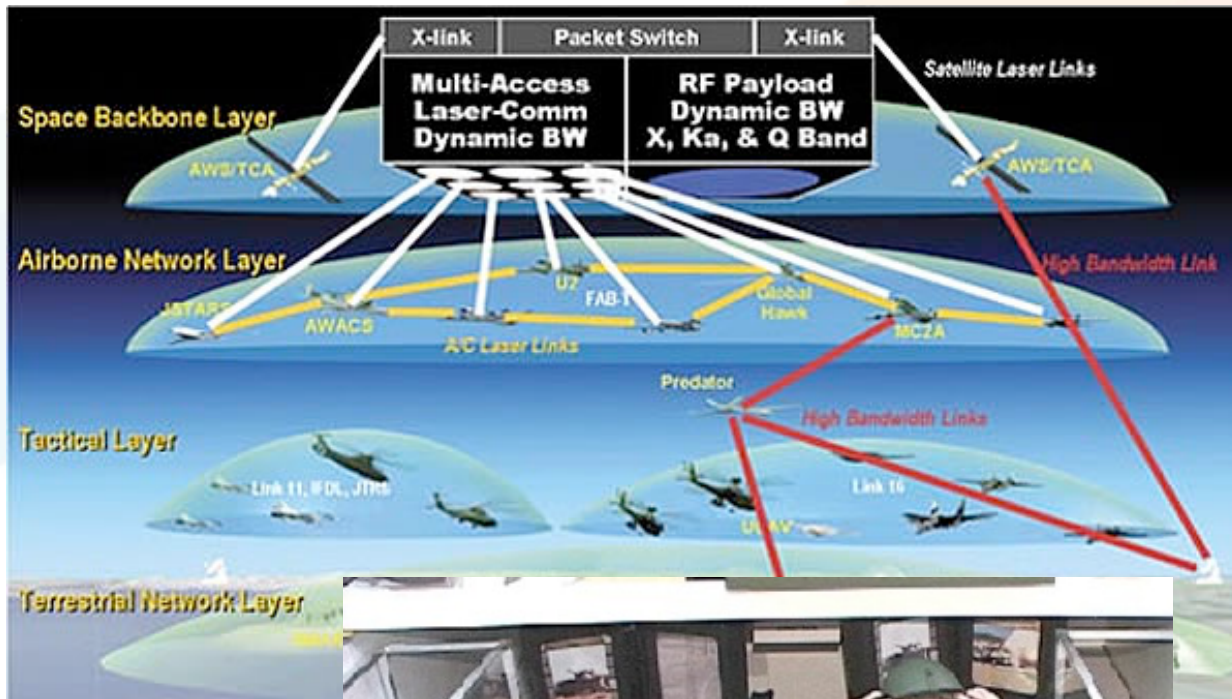


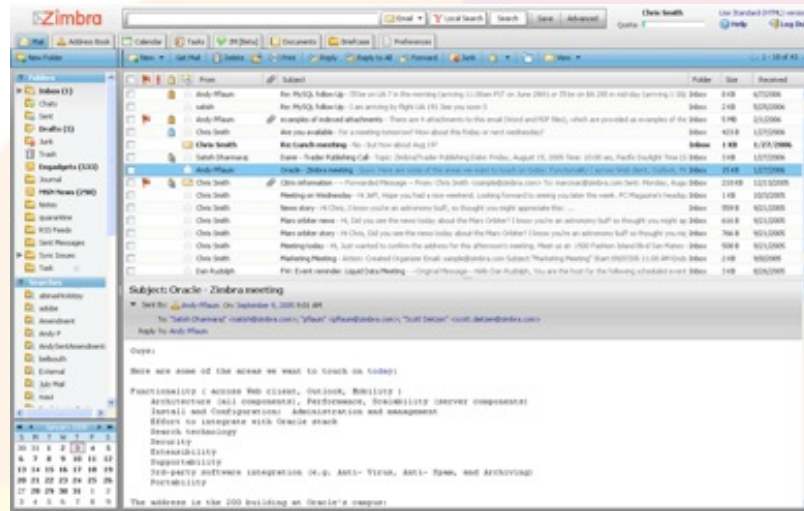


...how government functions...



# ...how we preserve our national security...





...how we communicate..



...and how we're entertained.





**Advances in IT also drive our economy**

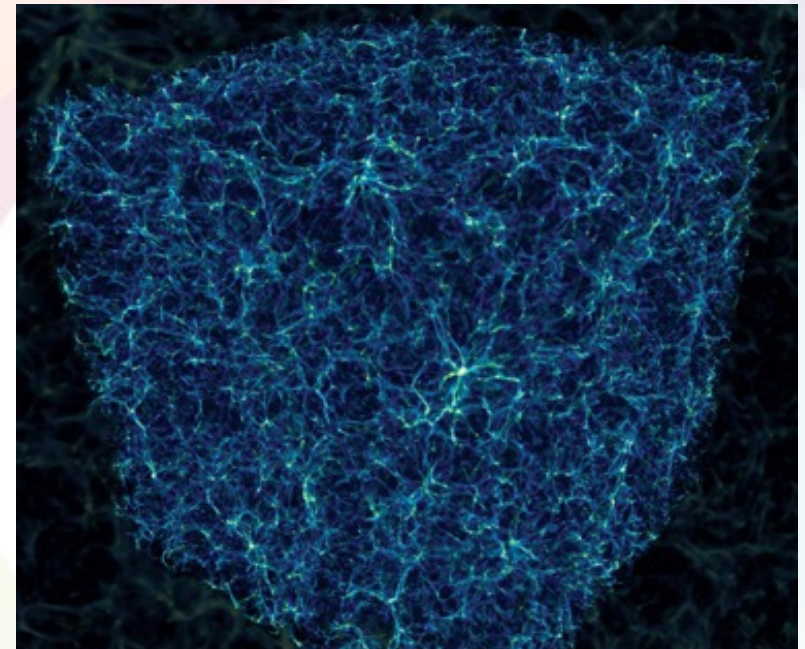
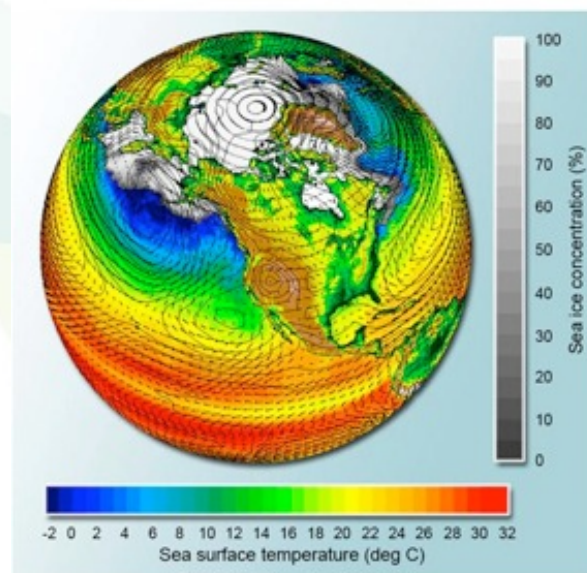
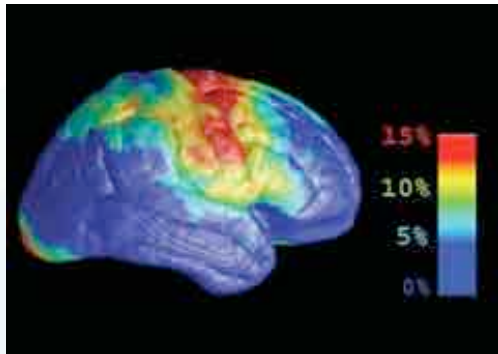
- Computing drives our economy, not just through the growth of the IT industry, but also through productivity gains across the entire economy
- Remarkable economic growth between '95 and '02 was spurred by productivity growth enabled almost completely by factors related to IT<sup>1</sup>
- IT enables productivity growth, enables the economy to run at full capacity, enables goods to be allocated more efficiently and the production of higher quality goods and services<sup>2</sup>

1. Jorgenson, Dale W., Mus S. Ho, and Kevin J. Stiroh. Productivity, Volume 3: Information Technology and the American Growth Resurgence. MIT Press. 2005.

2. Atkinson, Robert D., Andrew S. McKay. Digital Prosperity: Understanding the Economic Benefits of the Information Technology Revolution. Information Technology and Innovation Foundation. 2007.

**Advances in computing are enabling  
innovation in all other fields...**

# In Science and Engineering...



Created by Matthew Hall of NCSA's Advanced Visualization Laboratory

Computer modeling, visualization and data analysis have joined observation, theory, and experiment as the drivers of scientific discovery.

**The history is impressive, but the future  
is even more compelling**

- The future of networking
- Revolutionizing transportation
- Delivering personalized education
- Enabling the smart grid
- Empowering the developing world
- Improving health care
- Driving advances in *\*all\** fields of S&E

**It's impossible to imagine a field with greater  
opportunity to change the world**



The IT R&D ecosystem is **crucial** to innovation in IT, and federal support is **at the heart** of that ecosystem

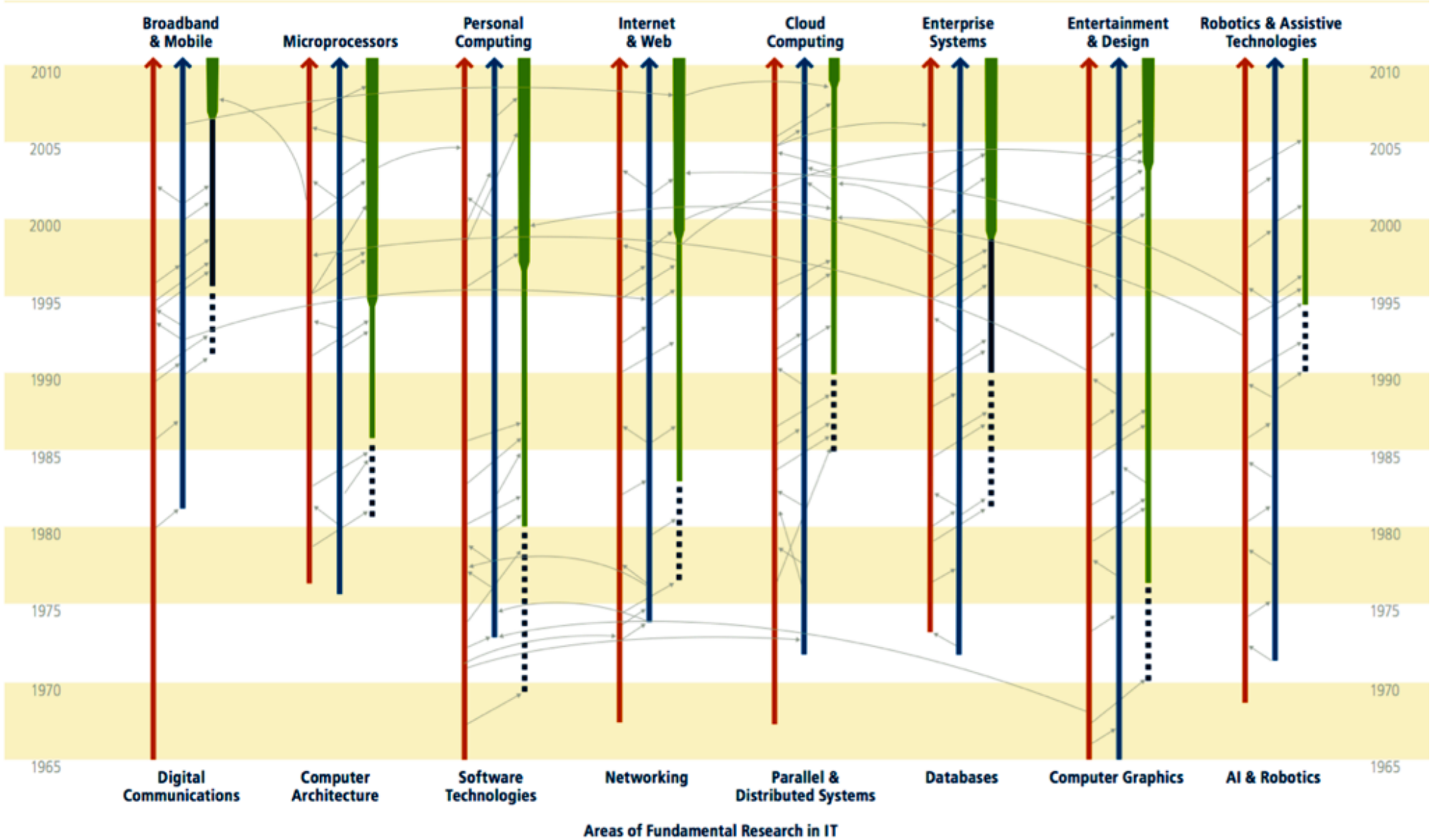


“ [An] extraordinarily productive interplay of federally funded university research, federally and privately funded industrial research, and entrepreneurial companies founded and staffed by people who moved back and forth between universities and industry.”

-NRC on the federal IT R&D Program

# IT Sectors With Large Economic Impact

Motorola      AMD Intel      eBay Akamai Yahoo!      IBM  
 Qualcomm      HP Symantec Juniper Facebook Twitter      VMware HP      Electronic Arts  
 Texas Instruments      Apple      Cisco Amazon      Microsoft      Oracle      Adobe Autodesk Xbox Nuance  
 iPhone      nVidia      Dell      Google      iPod      iRobot Intuitive Surgical



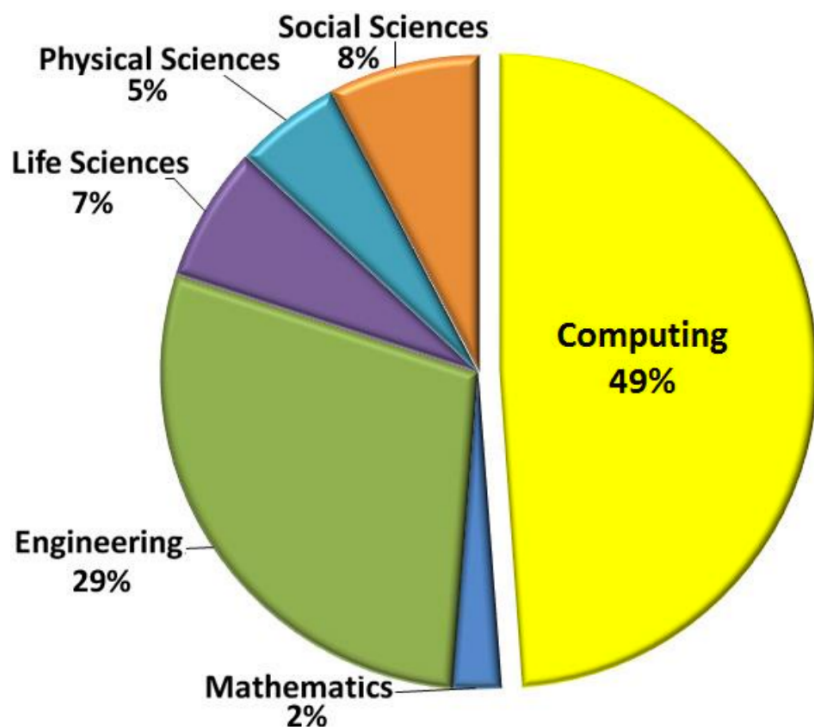
— University    — Industry R&D    — Products    — \$1 Billion Market    — \$10 Billion Market



**ESSENTIALLY EVERY ASPECT OF INFORMATION TECHNOLOGY ON WHICH  
WE RELY TODAY BEARS THE STAMP OF FEDERAL SUPPORT.**

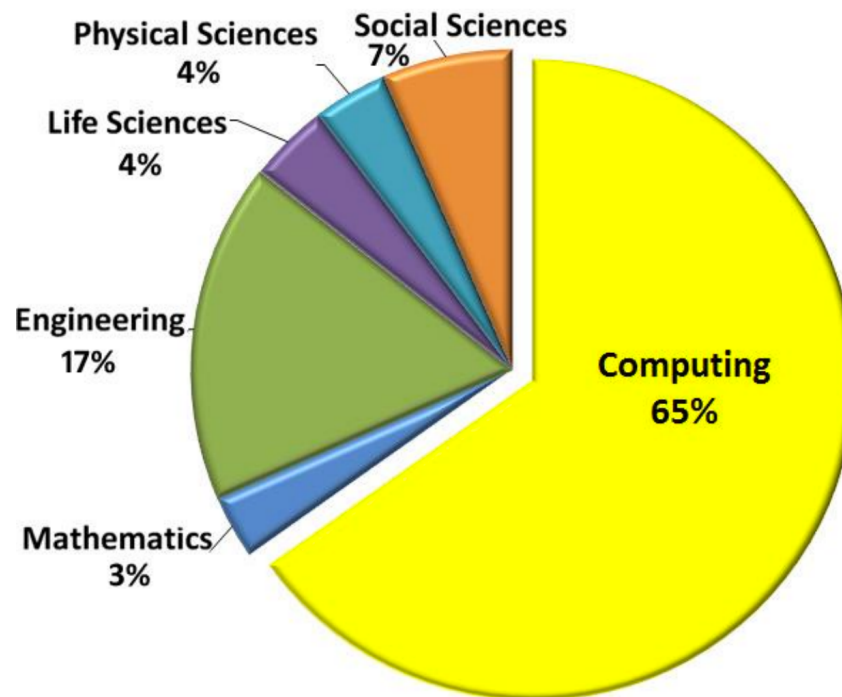
## Where the STEM Jobs Will Be

Projected Annual Growth of Total STEM Job Openings 2012-2022



## Where the STEM Jobs Will Be

Projected Annual Growth of **NEWLY CREATED** STEM Job Openings 2012-2022



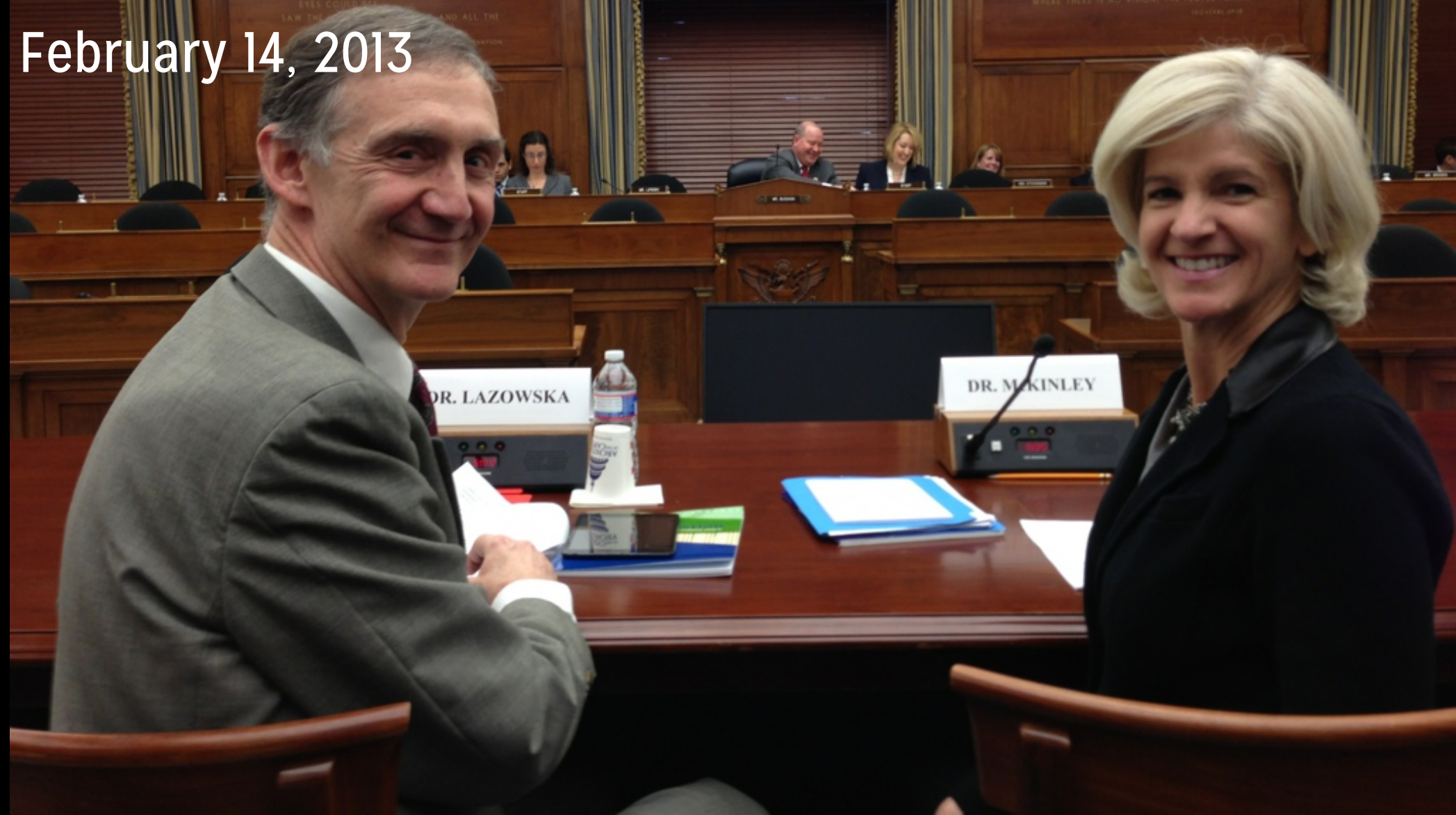
Source: Jobs data are calculated from the Bureau of Labor Statistics (BLS), Employment Projections 2012-2022, available at <http://www.bls.gov/emp/>.  
Courtesy of Association for Computing Machinery (acm.org).

## **WE'RE OPPORTUNISTIC...**

- **Congressional testimony**



House Committee on Science, Space and Technology  
Subcommittee on Research and Science Education  
Hearing on the NITRD Program  
February 14, 2013



## **WE'RE OPPORTUNISTIC...**

- Congressional testimony
- We host our own events and partner with others





# CRA's Congressional Fall Fly-In

September 2013





# LiSPI 2015

## CRA/CCC Leadership in Science Policy Institute

April 27-28, 2015  
Washington, DC

Nominations  
December 2014!





Task Force  
on American  
Innovation

# Deconstructing The iPad

How Federally Supported Research Leads to  
Game-Changing Innovation







# Deconstructing Precision Agriculture

Think Moon landing.

Think Internet.

Think iPhone and Google.

This is bigger.

**This is about  
feeding the world.**

Come hear from U.S. farmers, leading agriculture technology companies, and scientists on how they work together to solve this global challenge.

**Save the Date**

3/4/2015

Reception | 4:30 to 6:30 pm  
House Agriculture Committee Room,  
1300 Longworth House Office Building  
Washington, DC  
Invitation to follow

In partnership with

The Task Force on American Innovation

Soil Science Society of America

American Society of Agronomy

Crop Science Society of America

American Physical Society

Computing Research Association

Texas A&M

Coalition for the Advancement of Precision  
Agriculture (CAPA)

Association of Equipment Manufacturers  
(AEM)

WinField Solutions, LLC

Trimble



## WE'RE OPPORTUNISTIC...

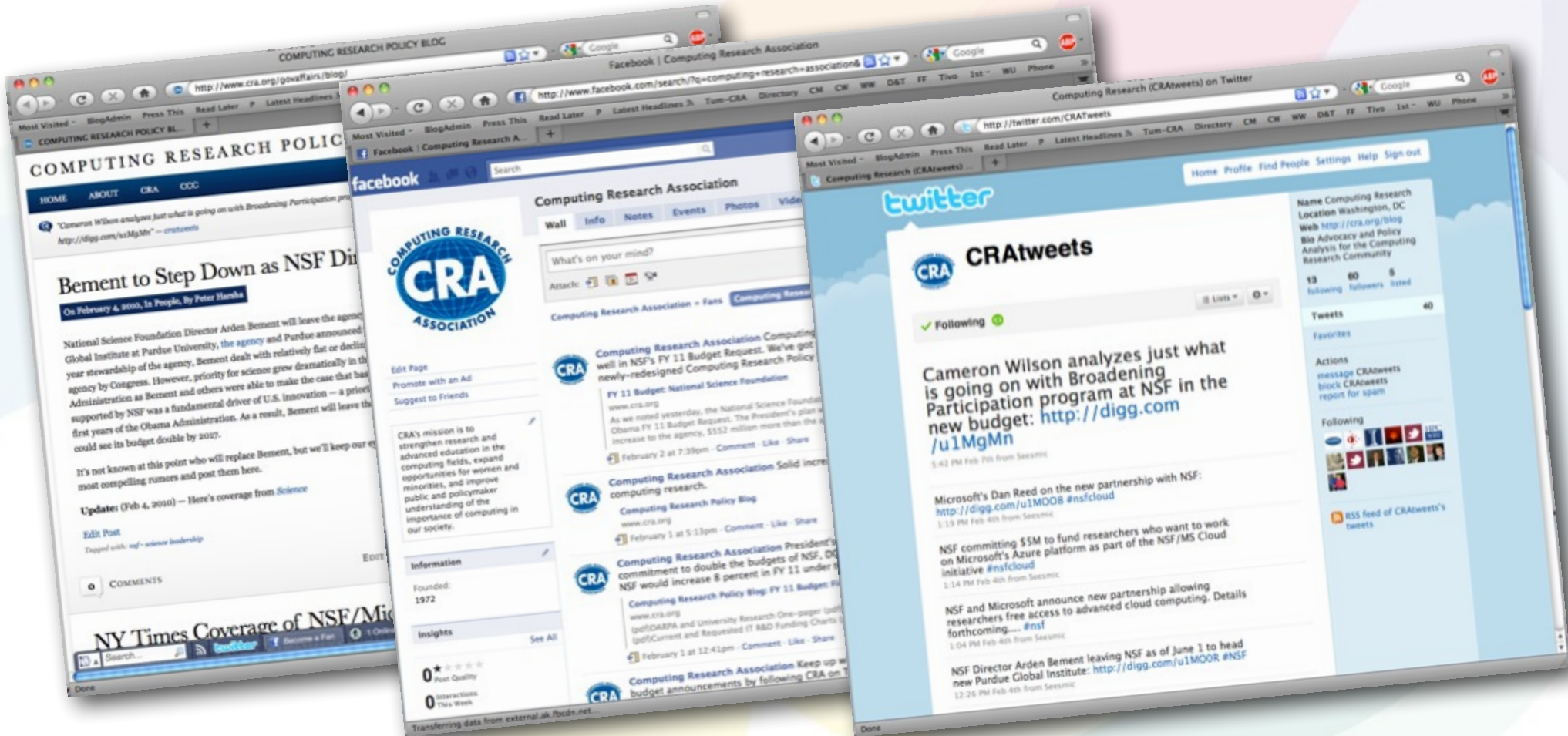
- Congressional testimony
- We host our own events and partner with others
- We've developed a good "brand"
- We strive to engage the community in policymaking – LiSPI



## WE'RE OPPORTUNISTIC...

- Part of a broader science advocacy community that's looking for good stories to tell
- Join coalitions around our interests
  - CNSF, CNSR, TFAI, ESC, CinC
- We leverage our interactions with the press

# We leverage social media (or try to...)



<http://cra.org/blog>

On Facebook

@CRATweets



**AND WE'VE HAD SOME SUCCESS...**



“This is our generation’s Sputnik moment. Two years ago, I said that we needed to reach a level of research and development we haven’t seen since the height of the Space Race. In a few weeks, I will be sending a budget to Congress that helps us meet that goal. We’ll invest in biomedical research, information technology, and especially clean energy technology – an investment that will strengthen our security, protect our planet, and create countless new jobs for our people.”

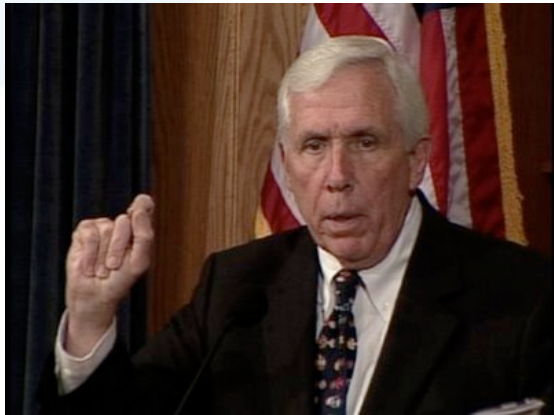


If we want America to stay on the cutting edge, we need young Americans to master the tools and technology that will change the way we do just about everything.

- President Obama in a video on behalf of the Hour of Code

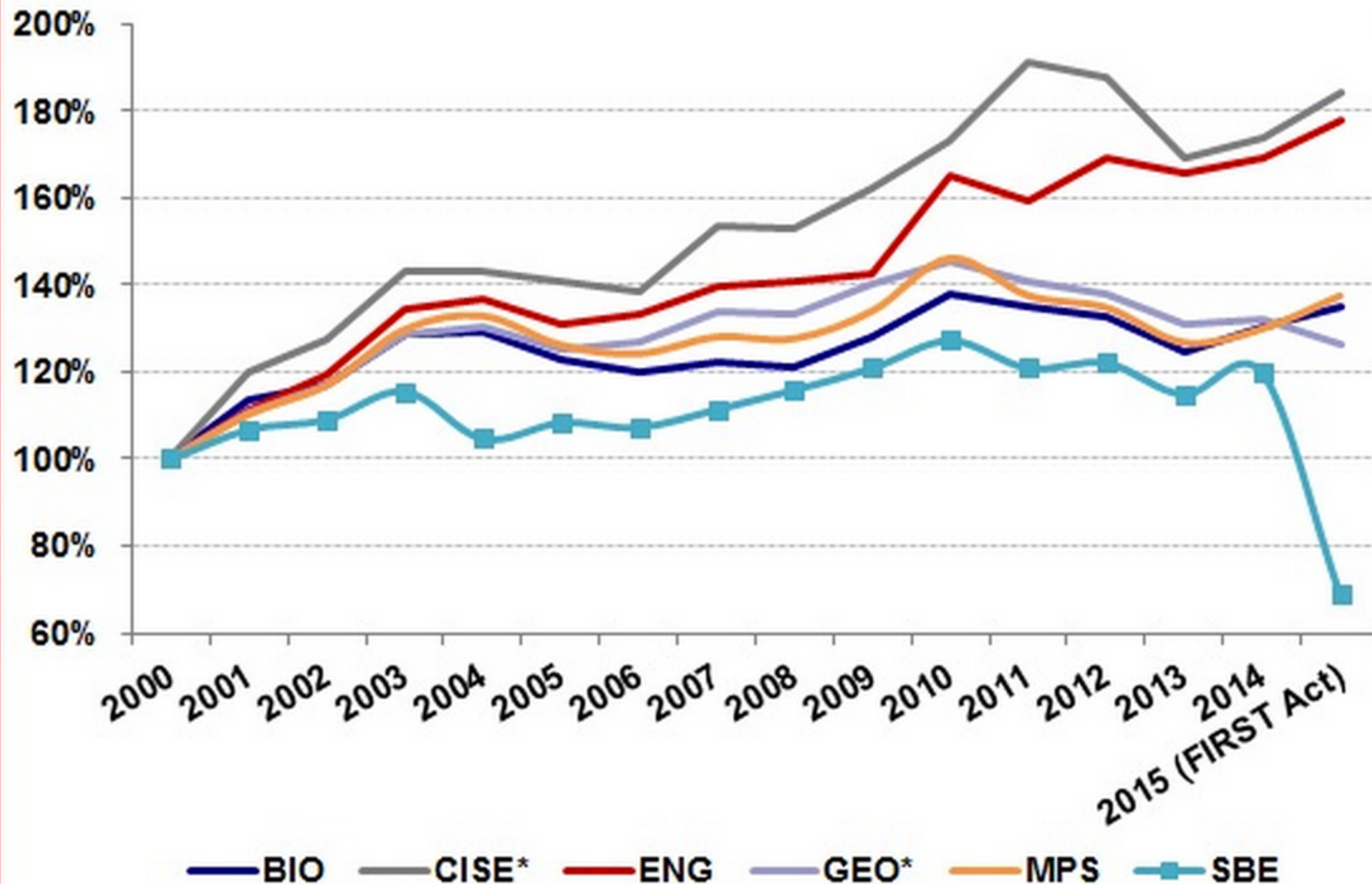


NSF's entire increase is provided to core research and education activities, which are critical to innovation and U.S. economic competitiveness, including funding for an advanced manufacturing science initiative and for research in **cyber-security and cyber-infrastructure.**



## NSF Directorate Budgets and the FIRST Act

Percent change from FY 2000 funding levels, constant dollars

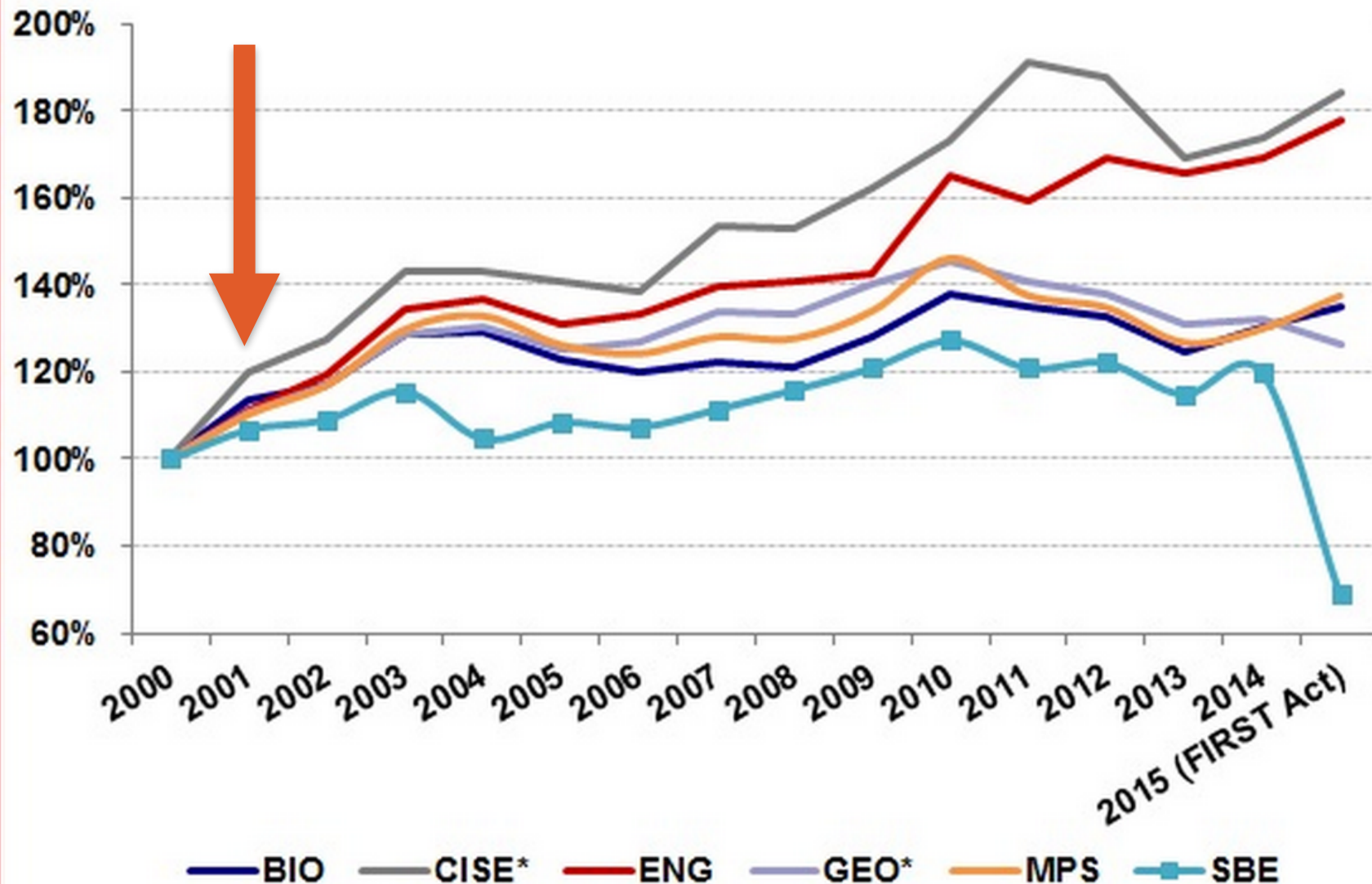


\*Adjusted for comparability. Based on historical agency data and proposed authorizations in the FIRST Act. © 2014 AAAS



## NSF Directorate Budgets and the FIRST Act

Percent change from FY 2000 funding levels, constant dollars



\*Adjusted for comparability. Based on historical agency data and proposed authorizations in the FIRST Act. © 2014 AAAS

## **MORE RECENT “SUCCESSSES”**

- **FY15 CJS bill includes 2.4 percent bump for NSF in a bill that’s otherwise flat**
- **FY15 Energy and Water approps includes a 13 percent bump for ASCR, despite holding Office of Science flat**
- **FIRST Act chicanery**
- **STEM Ed Act, Senate COMPETES**





# **CS UNDER CONGRESSIONAL SCRUTINY**

## PART OF A PATTERN OF ATTACKS ON SCIENCE

- House Science, Space and Technology Committee requesting info on 60+ grants
- Attacks on wasteful spending at NIH/CDC in light of the Ebola crisis
- Former Sen. Tom Coburn (R-OK) *Wastebook* reports (2014 version targeted 5 NIH grants, 10 NSF grants and 6 NASA grants).

# Truthy

## Information diffusion research at Indiana University

Truthy is a research project to study how memes spread on social media. A meme is a transmissible unit of information, such as a hashtag, phrase, or link.

This website highlights some of the research coming from this effort and showcases publications, visualizations, tools, and data resources from the project.

### Recent Papers



**Truthy** @truthyatindiana

4 Feb

The Rise of Social Bots - Recent advances in detecting bots mimicking human behavior on [#Twitter](#)  
[buff.ly/1DqECWq](http://buff.ly/1DqECWq) [#truthypaper](#)



**Truthy** @truthyatindiana

20 Jan

Dissemination of scholarly literature in social media  
[dx.doi.org/10.6084/m9.fig...](http://dx.doi.org/10.6084/m9.fig...) [#WebSci14](#) [#altmetrics14](#)  
[#truthypaper](#)

### Recent Talks



**Truthy** @truthyatindiana

4 Feb

[#truthytalk](#) on "the spread of misinformation in social media" at AAAI Spring Symp. on Socio-technical Behavior Mining [ualr.edu/nxagarwal/AAAI...](http://ualr.edu/nxagarwal/AAAI...)  
Expand



**Truthy** @truthyatindiana

19 Jan

Evolution of online user behavior during a social upheaval ([#WebSci14](#) Best Paper)  
[dx.doi.org/10.1145/261556...](http://dx.doi.org/10.1145/261556...) [#truthytalk](#)  
[twitter.com/EDTV/dubv](http://twitter.com/EDTV/dubv)

## TRUTHY – WHAT HAPPENED?

- Studied the political domain in the run-up to the 2010 election
- Looked at a range of hashtags and memes across the political spectrum
- Noted that the GOP appeared to use astroturfing
- Published work in 2012 describing their findings, Twitter shuts down ‘bot accounts
- Since then, they’ve studied OWS, societal unrest in Turkey, polarization of online political discourse, stock market movements, and geo trends of trending topics

# Feds Creating Database to Track 'Hate Speech' on Twitter

\$1 Million study focuses on internet memes, 'misinformation' in political campaigns



BY: [Elizabeth Harrington](#)

[Follow @LizWFB](#)

August 25, 2014 3:30 pm

The federal government is spending nearly \$1 million to create an online database that will track "misinformation" and hate speech on Twitter.

The National Science Foundation is financing the creation of a web service that will monitor "suspicious memes" and what it considers "false and misleading ideas," with a major focus on political activity online.

The "Truthy" database, created by researchers at Indiana University, is designed to "detect political smears, astroturfing, misinformation, and other social pollution."

The university has received **\$919,917** so far for the project.

"The project stands to benefit both the research community and the public significantly," the grant states. "Our data will be made available via [application programming interfaces] APIs and include information on meme propagation networks, statistical data, and relevant user and content features."

Washington Free Beacon  
August 25, 2014





National Science Foundation  
WHERE DISCOVERIES BEGIN



**Award Abstract #1101743**

## **ICES: Large: Meme Diffusion Through Mass Social Media**

### **ABSTRACT**

The project is aimed at modeling the diffusion of information online and empirically discriminating among models of mechanisms driving the spread of memes. We explore why some ideas cause viral explosions while others are quickly forgotten. Our analysis goes beyond the traditional approach of applied epidemic diffusion processes and focuses on cascade size distributions and popularity time series in order to model the agents and processes driving the online diffusion of information, including: users and their topical interests, competition for user attention, and the chronological age of information. Completion of our project will result in a better understanding of information flow and could assist in elucidating the complex mechanisms that underlie a variety of human dynamics and organizations. The analysis will involve studying meme diffusion in large-scale social media by collecting and analyzing massive streams of public micro-blogging data.

The project stands to benefit both the research community and the public significantly. Our data will be made available via APIs and include information on meme propagation networks, statistical data, and relevant user and content features. The open-source platform we develop will be made publicly available and will be extensible to ever more research areas as a greater preponderance of human activities are replicated online.

➤ Additionally, we will create a web service open to the public for monitoring trends, bursts, and suspicious memes. This service could mitigate the diffusion of false and misleading ideas, detect hate speech and subversive propaganda, and assist in the preservation of open debate.



Opinions

# The government wants to study 'social pollution' on Twitter

By Ajit Pai October 17, 2014

*Ajit Pai is a member of the Federal Communications Commission.*

If you take to Twitter to express your views on a hot-button issue, does the government have an interest in deciding whether you are spreading “misinformation”? If you tweet your support for a candidate in the November elections, should taxpayer money be used to monitor your speech and evaluate your “partisanship”?

My guess is that most Americans would answer those questions with a resounding no. But the federal government seems to disagree. The [National Science Foundation](#), a federal agency whose mission is to “promote the progress of science; to advance the national health, prosperity and welfare; and to secure the national defense,” is funding a project to collect and analyze your Twitter data.

The project is being developed by researchers at Indiana University, and its purported aim is to detect what they deem “social pollution” and to study what they call “social epidemics,” including how memes — ideas that spread throughout pop culture — propagate. What types of social pollution are they targeting? “Political smears,” so-called “astroturfing” and other forms of “misinformation.”

Named “[Truthy](#),” after a term coined by TV host [Stephen Colbert](#), the project claims to use a “sophisticated combination of text and data mining, social network analysis, and machine-learning models” to distinguish between memes that arise in an “organic

Ajit Pai OpEd  
Washington Post  
Oct 17, 2014

Opinions

## The government wants to study 'social pollution' on Twitter

By Ajit Pai October 17, 2014

*Ajit Pai is a member of the Federal Communications Commission.*

If you take to Twitter to express your views on a hot-button issue, does the government have an interest in deciding whether you are spreading "misinformation"? If you tweet your support for a candidate in the November elections, should taxpayer money be used to monitor your speech and evaluate your "partisanship"?

My guess is that most Americans would answer those questions with a resounding no. But the federal government seems to disagree. The [National Science Foundation](#), a federal agency whose mission is to "promote the progress of science; to advance the national health, prosperity and welfare; and to secure the national defense," is funding a project to collect and analyze your Twitter data.

The project is being developed by researchers at Indiana University, and its purported aim is to detect what they deem "social pollution" and to study what they call "social epidemics," including how memes — ideas that spread throughout pop culture — propagate. What types of social pollution are they targeting? "Political smears," so-called "astroturfing" and other forms of "misinformation."

Named "[Truthy](#)," after a term coined by TV host [Stephen Colbert](#), the project claims to use a "sophisticated combination of text and data mining, social network analysis, and machine learning models" to distinguish between memes that arise in an "organic

Ajit Pai OpEd  
Washington Post  
Oct 17, 2014

Opinions

# The government wants to study 'social pollution' on Twitter

By Ajit Pai October 17, 2014

Ajit Pai is a member of the Federal Communications Commission.

**“The concept seems to have come straight out of a George Orwell novel.”**

If you take to Twitter to express your views on a hot issue, should the government attempt to monitor whether you are spreading “misinformation”? If you tweet your support for a candidate in the upcoming elections, should taxpayer money be used to monitor your speech and evaluate your “partisanship”?

My guess is that most Americans would answer those questions with a resounding no. But the federal government seems to disagree. The [National Science Foundation](#), a federal agency whose mission is to “promote the progress of science; to advance the national health, prosperity and welfare; and to secure the national defense,” is funding a project to collect and analyze your Twitter data.

The project is being developed by researchers at Indiana University, and its purported aim is to detect what they deem “social pollution” and to study what they call “social epidemics,” including how memes — ideas that spread throughout pop culture — propagate. What types of social pollution are they targeting? “Political smears,” so-called “astroturfing” and other forms of “misinformation.”

Named “[Truthy](#),” after a term coined by TV host [Stephen Colbert](#), the project claims to use a “sophisticated combination of text and data mining, social network analysis, and machine learning models” to distinguish between memes that arise in an “organic

Ajit Pai OpEd  
Washington Post  
Oct 17, 2014

Opinions

## The government wants to study 'social pollution' on Twitter

By Ajit Pai October 17, 2014

*Ajit Pai is a member of the Federal Communications Commission.*

If you take to Twitter to express your views on a hot-button issue, does the government have an interest in deciding whether you are spreading "misinformation"? If you tweet your support for a candidate in the November elections, should taxpayer money be used to monitor your speech and evaluate your "partisanship"?

My guess is that most Americans would answer those questions with a resounding no. But the federal government seems to disagree. The [National Science Foundation](#), a federal agency whose mission is to "promote the progress of science; to advance the national health, prosperity and welfare; and to secure the national defense," is funding a project to collect and analyze your Twitter data.

The project is being developed by researchers at Indiana University, and its purported aim is to detect what they deem "social pollution" and to study what they call "social epidemics," including how memes — ideas that spread throughout pop culture — propagate. What types of social pollution are they targeting? "Political smears," so-called "astroturfing" and other forms of "misinformation."

Named "Truthy," after a term coined by TV host [Stephen Colbert](#), the project claims to use a "sophisticated combination of text and data mining, social network analysis, and machine learning models" to distinguish between memes that arise in an "organic

Ajit Pai OpEd  
Washington Post  
Oct 17, 2014

Opinions

## The government wants to study 'social pollution' on Twitter

By Ajit Pai

**“Truthy’s entire premise is false. In the United States, the government has no business entering the marketplace of ideas to establish an arbiter of what is false, misleading or a political smear. Nor should the government be involved in any effort to squint for and squelch what is deemed to be ‘subversive propaganda.’**

**Instead, the merits of a viewpoint should be determined by the public through robust debate. I had thought we had learned these lessons long ago.”**

Ajit Pai OpEd  
Washington Post  
Oct 17, 2014

The project is being developed by researchers at Indiana University, and its purported aim is to detect what they deem “social pollution” and to study what they call “social epidemics,” including how memes — ideas that spread throughout pop culture — propagate. What types of social pollution are they targeting? “Political smears,” so-called “astroturfing” and other forms of “misinformation.”

Named “Truthy,” after a term coined by TV host [Stephen Colbert](#), the project claims to use a “sophisticated combination of text and data mining, social network analysis, and machine learning models” to distinguish between memes that arise in an “organic





Lamar Smith  
Chairman

Search

[About](#)

[Hearings & Legislation](#)

[News](#)

[Subcommittees](#)

[Initiatives](#)

[Contact Us](#)

[Home](#) » [Media Center](#) » [Press Releases](#)

## Smith: NSF Has No Business Using Taxpayer Dollars to Study Political Messages on Twitter

OCT 21, 2014

**Washington, D.C.** – Science, Space, and Technology Committee Chairman Lamar Smith (R-Texas) today released the following statement after media reports highlighted a one million dollar research project funded by the National Science Foundation (NSF) in 2011 to analyze political messages and discussion on Twitter. The goal of the project is to analyze and detect ‘subversive propaganda’ in order to mitigate ‘misleading ideas’ on social media.

**Chairman Smith:** “The government has no business using taxpayer dollars to support limiting free speech on Twitter and other social media. While the Science Committee has recently looked into a number of other questionable NSF grants, this one appears to be worse than a simple misuse of public funds. The NSF is out of touch and out of control. The Science Committee is investigating how this grant came to be awarded taxpayer dollars. The NSF must be held accountable for its funding decisions.”

### News

[Press Releases](#)

[In The News](#)

[Photos](#)

[Letters](#)



Lamar Smith  
Chairman

About    Hearings & Legislation    News    Subcommittees    Initiatives    Contact Us

Home » Media Center » Press Releases

News  
Press Releases

**“While the Science Committee has recently looked into a number of other questionable NSF grants, this one appears to be worse than a simple misuse of public funds. The NSF is out of touch and out of control. The Science Committee is investigating how this grant came to be awarded taxpayer dollars. The NSF must be held accountable for its funding decisions.”**

Chairman Smith: “The government has no business using taxpayer dollars to support limiting free speech on Twitter and other social media. While the Science Committee has recently looked into a number of other questionable NSF grants, this one appears to be worse than a simple misuse of public funds. The NSF is out of touch and out of control. The Science Committee is investigating how this grant came to be awarded taxpayer dollars. The NSF must be held accountable for its funding decisions.”



# KEVIN McCARTHY

MAJORITY LEADER

PRESS RELEASES

BLOG

HOUSE SCHEDULE ▶

OCT 23, 2014

## #KillingFreeSpeech

Why does the government suddenly care about your Twitter activity?

A federal grant from the National Science Foundation's Computer Science directorate is pumping a lot of money into analyzing your Twitter habits. So far nearly \$1 million dollars has been spent on Truthy, a project developed by researchers at Indiana University that would use taxpayer funds to monitor speech on Twitter and evaluate users' "partisanship" and to track "subversive propaganda."

The intended goal of the project is to "mitigate the diffusion of false and misleading ideas, detect hate speech and subversive propaganda, and assist in the preservation of open debate," according to Truthy. What they don't seem to realize is that the government funding a program to "mitigate" what it sees as "the diffusion of misleading ideas" is directly contrary to open debate and a free society.

I'd agree that the federal government should determine what



KEVIN McCARTHY  
MAJORITY LEADER

PRESS RELEASES

BLOG

HOUSE SCHEDULE ▶

OCT 23, 2014

## #KillingFreeSpeech

**“Government funding of this project is not only a waste during a time of budgetary constraints, it is also a danger to free society better suited for a George Orwell book than a country founded on the idea of liberty.”**



# COMPUTING COMMUNITY WEIGHS IN....



November 4, 2014

The Honorable Lamar Smith  
Chairman  
House Committee on Science, Space and Technology  
2321 Rayburn House Office Building  
Washington, DC 20515

The Honorable Eddie Bernice Johnson  
Ranking Member  
House Committee on Science, Space and Technology  
394 Ford House Office Building  
Washington, DC 20515

Dear Chairman Smith and Ranking Member Johnson,

As representatives of the computing community, we are dismayed by recent mischaracterizations and misplaced criticisms of research on information diffusion in online social networks at the Center for Complex Networks and Systems Research at Indiana University. This work is focused on significant research problems in computer science, and in no way represents "a Federally-funded assault on free speech."

The research project is a scientific study of how information spreads in social networks - a communication landscape that is fundamentally different than anything that has come before. It uses automated sentiment analysis algorithms and other network analysis tools to study real-time Twitter streams of millions of publicly available tweets to attempt to understand how information is spread across the network.

The work can help internet users discover where information they glean from the web or social networks has come from - did it arise organically, did it originate from authoritative sources, or has it been spread by bots designed to "game" social networks and spread misinformation? The work can provide great value to internet users in the U.S. by helping them understand the source of the messages they receive, allowing them to potentially avoid malware or phishing attacks.

The work can also have great value to other researchers studying the flow of information across the network, including a better understanding of why some memes travel faster than others, and how



**CRA**  
Computing Research  
Association



## COMPUTING COMMUNITY WEIGHS IN....

“We do not believe this work represents a threat to free speech or a suppression of any type of speech over the internet. The tools developed in the course of this research are capable of making no political judgements, no prognostications, and no editorial comments, nor do they provide any capability for exerting any control over the Twitter stream they analyze. The work is not a database tracking hate speech, or even defining it. It simply visualizes the patterns of flow of publicly available information in the Twitter stream.

## COMPUTING COMMUNITY WEIGHS IN....

“We ask that as you exercise your oversight responsibilities over the National Science Foundation, which funded much of this research, you call on subject-matter experts to help guide your investigation and not let media mischaracterizations of the work color your effort.”

As representatives of the computing community, we are dismayed by recent mischaracterizations of research on information diffusion in online social networks at the Center for Complex Networks and Systems Research at Indiana University. This work is focused on significant research problems in computer science, and in no way represents "a Federally-funded assault on free speech."

The research project is a scientific study of how information spreads in social networks - a communication landscape that is fundamentally different than anything that has come before. It uses automated sentiment analysis algorithms and other network analysis tools to study real-time Twitter streams of millions of publicly available tweets to attempt to understand how information is spread across the network.

The work can help internet users discover where information they glean from the web or social networks has come from - did it arise organically, did it originate from authoritative sources, or has it been spread by bots designed to "game" social networks and spread misinformation? The work can provide great value to internet users in the U.S. by helping them understand the source of the messages they receive, allowing them to potentially avoid malware or phishing attacks.

The work can also have great value to other researchers studying the flow of information across the network, providing a better understanding of why some memes travel faster than others, and how

# REACTION

# REACTION

**TRENDING:** Samsung looks to LoopPay for mobile pay foothold · Spy agencies hacked SIM card maker's encryption · Resources/White Papers

Popular Now: [dropdown]

Home > IT Management > Technology Law & Regulation

**NEWS**

## Computer scientists say meme research doesn't threaten free speech

*Credit: iStockphoto*

U.S. House lawmakers go viral over information diffusion study funded by the feds

**MORE LIKE THIS**

- GOP takeover in Congress could bode ill for supercomputing and science
- OS Blog: Windows, Linux Highlights From Around the Web
- CIO 100 Winners Turn Analytics Into Money-Making New Products
- on IDG Answers** → I'm considering a slight career change to IT security - what do I need to...

# REACTION

TRENDING: Samsung looks to LoopPay for mobile pay foothold · Spy agency

## COMPUTERWORLD

Home > IT Management > Technology Law & Regulation

NEWS

### Computer scientists say mobile devices threaten free speech



Credit: iStockphoto

U.S. House lawmakers go viral over information study funded by the feds



TRENDING: Immigration | ISIS | Jeb Bush  
SPONSORED: Empowering People's Financial Lives

NEWS POLICY REGULATION BLOGS BUSINESS CAMPAIGN OPINION CONTRIBUTORS

BLOG BRIEFING ROOM CONGRESS BLOG CONTRIBUTORS TWITTER

Giuliani says he's received death threats... 04:20pm  
Why an official language is needed now... 04:00pm  
Did an Okla. Republican congressman urge... 04:30pm  
Congresswoman perm-filled... 01:44pm

HOME | BUSINESS & LOBBYING

## Congress should defer to experts on 'Truthy,' computer scientists say



By Mario Trujillo - 11/05/14 06:01 PM EST

Five leading groups in the computer science industry are urging Congress to consult experts when investigating the funding of a university project that studies Twitter trends.

They said the **"Truthy"** project at Indiana University does not represent a threat to free speech on the Internet.

Members of Congress should "call on subject-matter experts to help guide your investigation and not let media mischaracterizations of the work color your effort," the groups write in a **letter** sent Tuesday to House Science Committee Chairman Lamar Smith (R-Texas) and ranking member Eddie Bernice Johnson (D-Texas).

The project dates back to 2011 and is funded by the federal National Science Foundation. It came under recent criticism by Republicans who claimed it appeared to come straight out of a George Orwell novel.



# REACTION

TRENDING: Samsung looks to LoopPay for mobile pay foothold · Spy agencies

## COMPUTERWORLD

Home > IT Management > Technology Law & Regulation

NEWS

### Computer scientists say media threaten free speech



Credit: iStockphoto

U.S. House lawmakers go viral over informant study funded by the feds

## THE HILL

NEWS POLICY REGULATION

BLOG BRIEFING ROOM

Giuliani says he's received death threats... 04:20pm

Why an... needed 04:00pm

HOME | BUSINESS & LOBBYING

### Congress should 'Truthy,' computer scientists say

By Mario Trujillo - 11/05/14 06:01 PM EST

Five leading groups in the computer science industry are warning Congress when investigating the funding of a study that could lead to the loss of jobs on the Internet.

They said the **"Truthy"** project at Intel and Google is a violation of the First Amendment on the Internet.

Members of Congress should "call out" the project and not let media mischaracterizations of the project take Tuesday to House Science Committee chair Eddie Bernice Johnson (D-Texas).

The project dates back to 2011 and came under recent criticism by Rep. George Orwell novel.

## Science

Daily News

Enter Search Term


AAAS NEWS SCIENCE JOURNALS CAREERS MULTIMEDIA

News Home Hot Topics Categories From the Magazine ScienceInsider

### Updated: What does it take to get your grant targeted by Congress?

Tweet 62 Share 167 8+1 7

By Jeffrey Mervis | 10 November 2014 2:15 pm | 9 Comments



Jeff tries to explain how government works to readers of *Science*.

Email Jeffrey

When it comes to assessing the value of federally funded social science research, one congressman's meat is apparently another's poison.

In March 2013, social psychologist Brad Bushman of Ohio State University, Columbus, testified before the U.S. House of Representatives' panel that funds the National Science Foundation (NSF). Bushman had co-chaired an NSF workshop on the causes of youth violence convened in the wake of the deadly school shootings in Newtown, Connecticut. And Representative Frank Wolf (R-VA), who leads the spending panel and who asked NSF to hold the workshop, was eager to hear Bushman summarize its findings and discuss this pressing social problem.

Last week, a second congressional panel also singled out Bushman's work. But instead of making Bushman the star witness at a hearing, Representative Lamar Smith (R-TX), the chair of the House science committee, subjected him to ridicule. To be precise, Smith put a 2010 NSF grant to Bushman for research on self-control of aggression on a list of 11 NSF awards that Smith regards as a waste of taxpayer dollars. The new cohort of grants, going back as far as 5 years, join 47 others that the science committee has flagged in a running dispute with NSF over how it manages its \$7-billion-a-year budget.

The fight has rekindled the age-old question of how to assess the value of basic research. Most scientists say that peer review—using experts in a particular field—offers the best way to judge both the scientific merit and the societal value of a piece of fundamental research. And they object when politicians substitute their own judgment. But Smith says he's simply doing his job,

## REACTION

While some have argued that Truthy could be used to better understand things like disaster communication or to assist law enforcement, instead it appears Truthy focused on examples of 'false and misleading ideas, hate speech, and subversive propaganda' communicated by conservative groups.

*Letter to NSF Director France Cordova -November 10, 2014*  
Rep. Lamar Smith (R-TX), Chairman  
House Committee on Science, Space and Technology

## SO, WE'RE WAITING FOR THE OTHER SHOE TO DROP

- No hearings or further requests for info
- No requests for subject-matter expertise
- Smith has requested info on 13 additional grants (up to ~70 now), including 1 CISE funded grant on malware detection

## THINGS TO KEEP IN MIND WHEN COMMUNICATING ABOUT RESEARCH

- Congress has a legitimate oversight responsibility and Members take seriously their stewardship of tax dollars spent on research.
- Attention is heightened because the pressure to cut discretionary spending is so high.
- Members of Congress are acutely aware of zero-sum nature of Federal appropriations.
- There is a serious lack of subject-matter expertise on some key committees.

## THINGS TO KEEP IN MIND WHEN COMMUNICATING ABOUT RESEARCH

- Smith and his staff believe, generally, in the value of the Federal investment in research, though some areas, while interesting, don't represent a compelling National interest.
- Some topics raise red flags: non-US topics, games or popular culture, social media, politics, climate change...



## SO WHAT DO YOU DO IF YOU HAVE RESEARCH IN THOSE AREAS?

- Don't be cute. Try not to trivialize your work. Emphasize the problem you're investigating and the new knowledge to be gained.
- Explain why the topic area you're exploring is the most appropriate one for the problem you're trying to solve.
- Remember, you're not spending Federal money – you're spending taxpayer money. You need to be able to explain your work to your neighbors as if you just took 30 percent of their paychecks to pay for it.

**THANKS!**

Peter Harsha  
[harsha@cra.org](mailto:harsha@cra.org)  
[cra.org/blog](http://cra.org/blog)  
@CRATweets