

The National Institutes of Health The NLM Strategic Plan

Leadership in Science Policy Institute

November 7, 2017

Patricia Flatley Brennan, RN, PhD

Director, National Library of Medicine

Interim NIH Associate Director for Data Science



U.S. National Library of Medicine

November 7, 2017

National Institutes of Health

- 27 Institutes and Centers
- \$35B per year; 80% distributed to the extramural community
 - NLM is different!
- Priorities:
 - Translating discovery into health
 - Addressing the country's critical health concerns



U.S. National Library of Medicine

November 7, 2017



U.S. National Library of Medicine

November 7, 2017

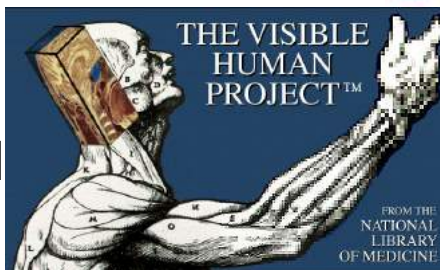
NLM by the numbers

- FY17 expenditures.....\$406,604M
- Employees1700
 - NCBI700
- PubMed daily visits.....4M
- Molecular, clinical & specialized data users per day ..0.5M
- National Network of Libraries of Medicine.....6500
- RxNORM calls per minute.....>1000
- University training programs (T15 & T32).....30
- Environmental Disaster Responses in 2017.....6





PubMed



U.S. National Library of Medicine

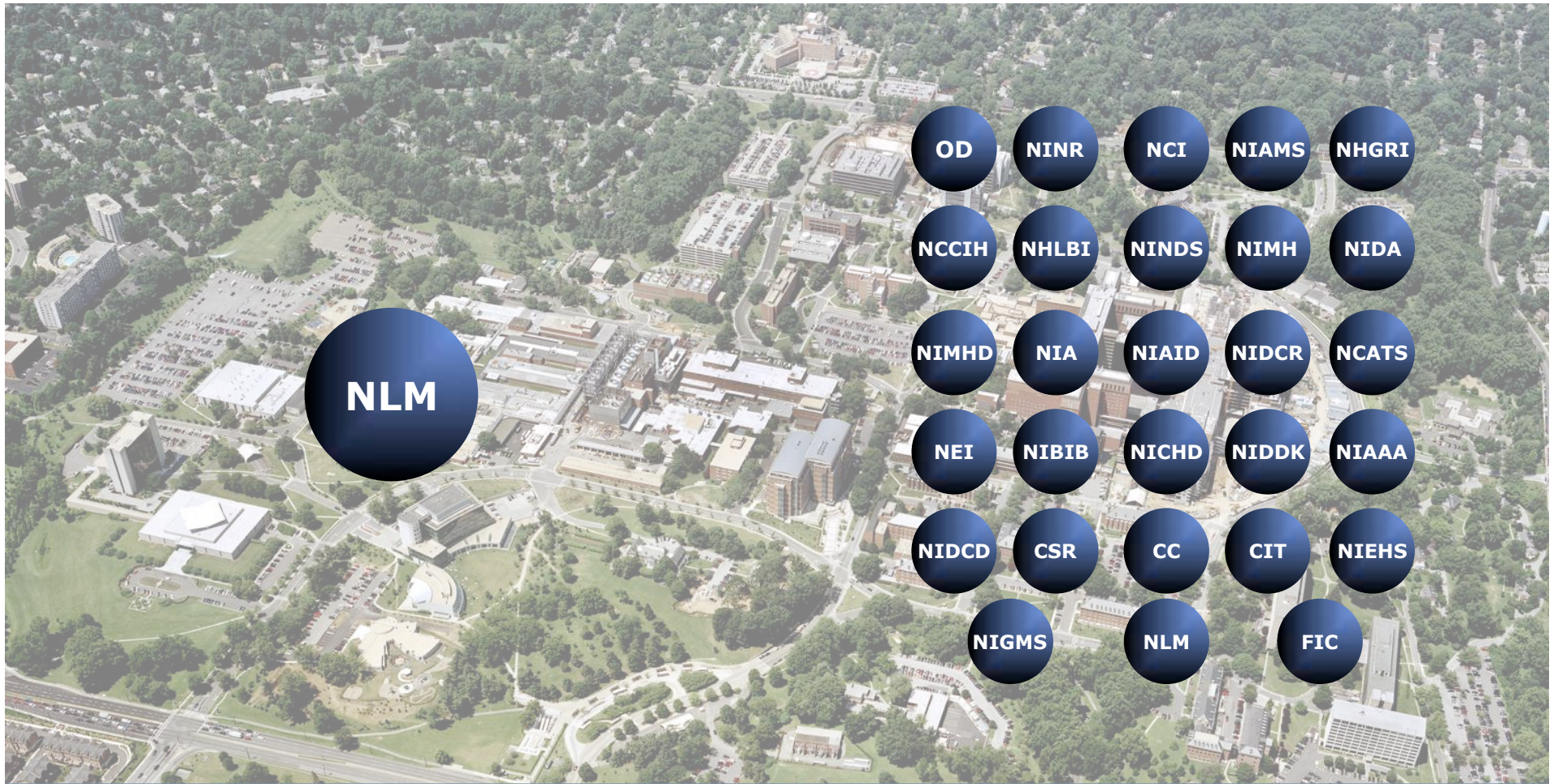
November 7, 2017

Trans-NIH Solutions



U.S. National Library of Medicine

November 7, 2017



U.S. National Library of Medicine

November 7, 2017



NLM Strategic Plan



U.S. National Library of Medicine

November 7, 2017

Transforming Information into Discovery



NLM as a platform for
biomedical discovery
& data-powered health



Effective dissemination
of information across a
broad range of users



A workforce prepared
to advance data-driven
discovery & health



U.S. National Library of Medicine

November 7, 2017



U.S. National Library of Medicine

November 7, 2017

DATA



DISCOVERY



BEST PRACTICES



LINKS TO LIT



COLLECTION



PROMOTION



IMPACT

**Do for data what we've
done for the literature.**



U.S. National Library of Medicine

November 7, 2017



Health Care

Seamless linking of
clinical and research data



U.S. National Library of Medicine

November 7, 2017

Serving the 21st-Century User

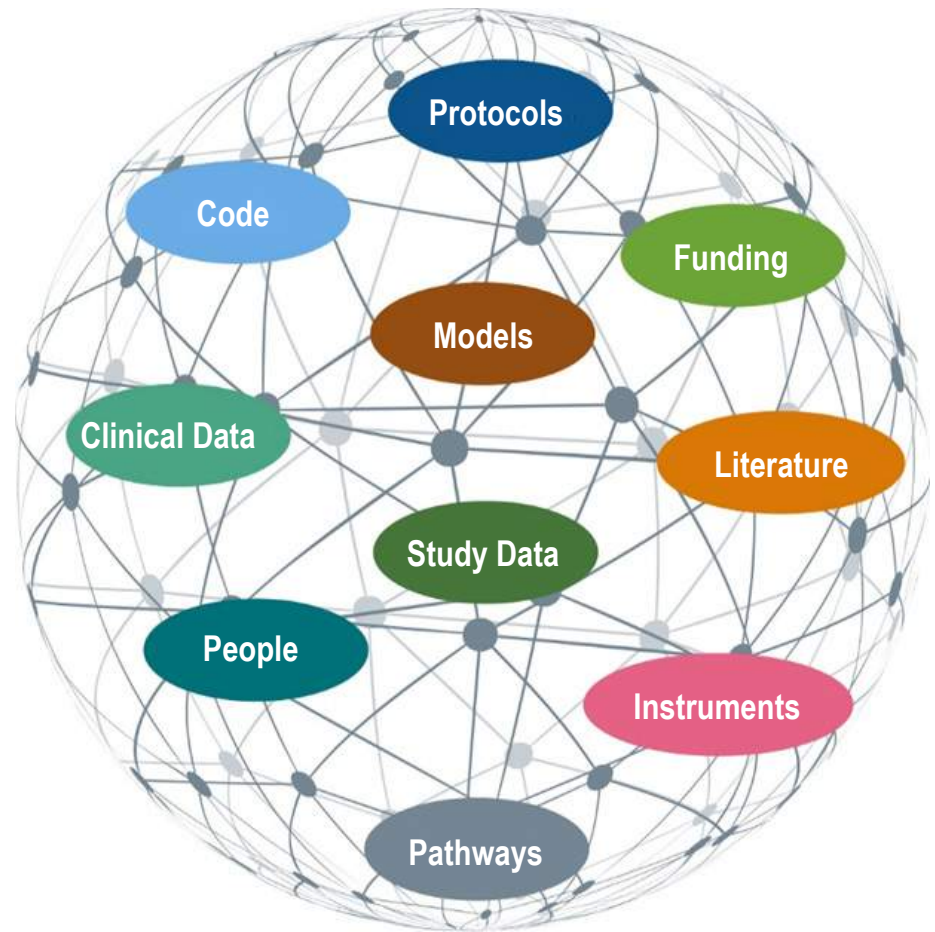


U.S. National Library of Medicine

November 7, 2017



Fostering a sphere of discovery digital research objects



U.S. National Library of Medicine

November 7, 2017

The Care Between the Care



Go where the care happens.



U.S. National Library of Medicine

November 7, 2017



**Data-powered
health will
require new
approaches to
NLM-delivered
information**



U.S. National Library of Medicine

November 7, 2017

Workforce Excellence



U.S. National Library of Medicine

November 7, 2017



Training

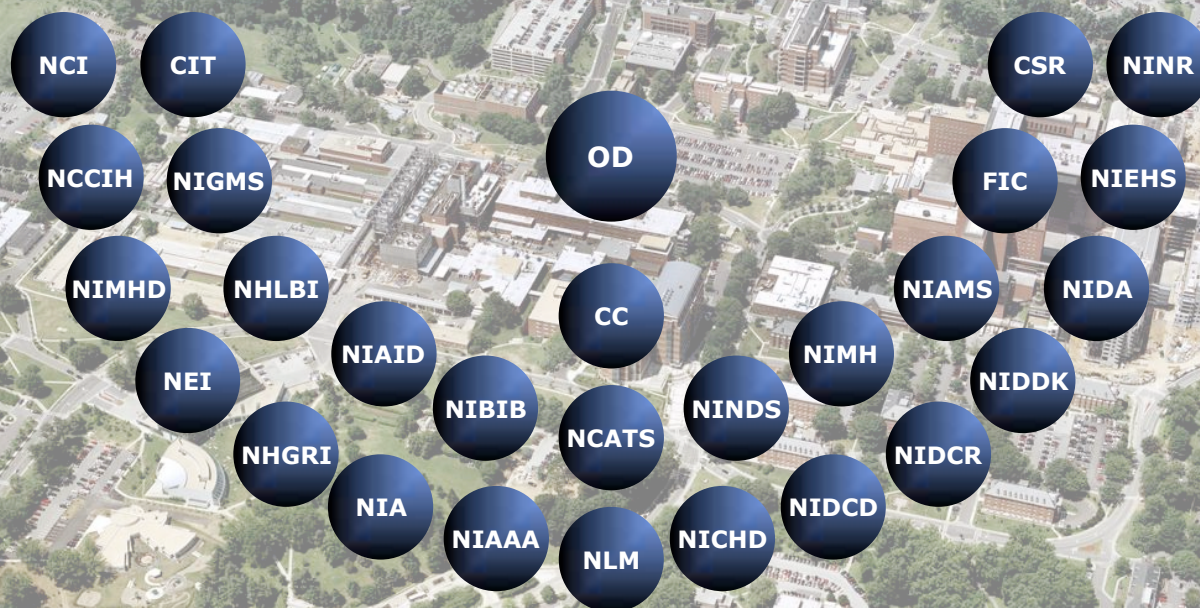
- Re-imagine university-based data science training
- Increase intramural data science capacity
- Foster data-savvy clinicians and librarians



U.S. National Library of Medicine

November 7, 2017

New Initiatives, Budget, Impact and Influence: Balancing IC-Specific and Trans-NIH



U.S. National Library of Medicine

November 7, 2017

NIH Measures of Success

- Discovery
- Impact
 - P – productivity – Relative Citation Ratio
 - Q – quality
 - R – reproducibility
 - S – sharing
 - T – translation -- Patents

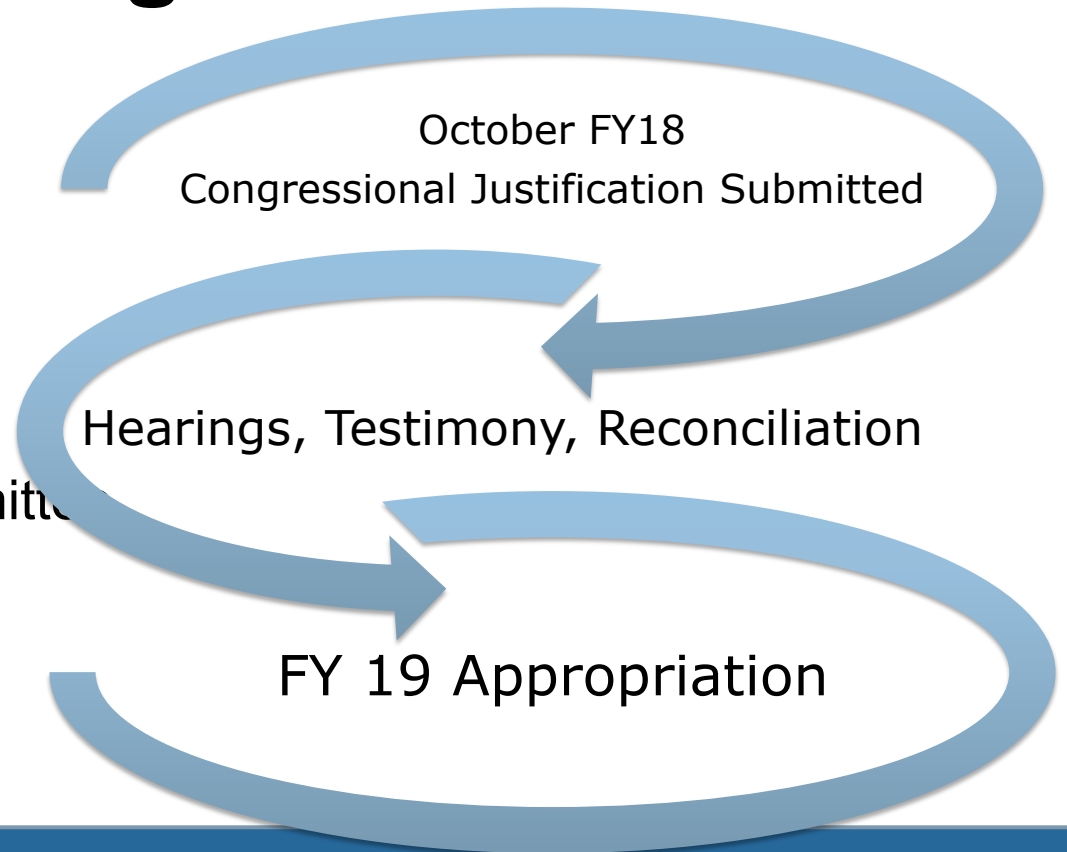


U.S. National Library of Medicine

November 7, 2017

The NIH Budget Process

- Annual budget, established by congress
- A tale of many budgets:
 - President's
 - House Appropriations Committee
 - Senate Health, Education, Labor & Pension
- Continuing Resolutions



Science Engagement with NIH

- Opportunities for scientists to advise and engage federal science agencies
 - IPA
 - Memoranda of Understanding
 - Office of Science Policy, Office of Legislative Affairs
- To what extent is outside advice sought and in support of what kinds of activities?
 - 38,000 Special Government Employees
 - FACA
- What kinds of advice and modes of engagement are unlikely to be effective?



U.S. National Library of Medicine

November 7, 2017

Help Shape the Future of Data Science!

RFI Next Gen
Data Science

bit.ly/2yHeieT

Request for Information (RFI): Next-Generation Data Science Challenges in Health and Biomedicine

Notice Number: NOT-LM-17-006

Key Dates
Release Date: September 26, 2017
Response Date: ~~November 1, 2017~~

Related Announcements
None

Issued by
National Library of Medicine (NLM)

Purpose
On behalf of the National Institutes of Health (NIH), the National Library of Medicine (NLM) seeks community input on new data science research initiatives that could address key challenges currently faced by researchers, clinicians, administrators, and others, in all areas of biomedical, social/behavioral and health-related research. The field of data science is broad in scope, encompassing approaches for the generation, characterization, management, storage, analysis, visualization, integration and use of large, heterogeneous data sets that have relevance to health and biomedicine. Data science undergirds the broad and interdependent objectives of the NIH Strategic Plan (<https://www.nih.gov/about-nih/nih-wide-strategic-plan>).

Information about data science research directions that could lead to breakthroughs in any or all NIH interest areas is welcomed, whether applicable across wide swaths of health and biomedicine, or focused on particular research domains.

Background
During the past five years, and in response to a 2012 working group report on data and informatics issued by the Advisory Committee to the NIH Director (ACD) (<https://acd.od.nih.gov/working-groups/diwig.html>), NIH has made substantial investments in a data science infrastructure of tools, resources and workforce components of a digital research ecosystem for health and biomedicine. (<https://commonfund.nih.gov/bd2k/>). Building on this foundation, the landscape of data science research has evolved and is rapidly changing, within and beyond the NIH, its institutes, centers, and offices. In 2015, another ACD working group recommended that NLM become the programmatic and administrative home for data science at NIH, complementing NIH's efforts to catalyze open science, data science and research reproducibility (<https://acd.od.nih.gov/documents/reports/Report-NLM-06112015-ACD.pdf>). Accordingly, to help NIH continue to strengthen and expand the scope of its investments in data science, NLM seeks information from public and private organizations (e.g., universities and industry) and individuals on promising data science research directions in health and biomedicine.

Requested

November 7, 2017

Questions & Discussion



U.S. National Library of Medicine

November 7, 2017

Reaching me



@NLMdirector



patti.brennan@nih.gov

emey87 / IconArchive / CC BY-NC-ND-4.0



U.S. National Library of Medicine

November 7, 2017