

Entrepreneurial Opportunities & Skills

Susan H. Rodger and Ayanna Howard



CRA-W

Computing Research Association
Women

Ayanna Howard

- Chair, School of Interactive Computing (IC)
- Linda J. and Mark C. Smith Endowed Professor
- CTO/Founder, Zyrobotics
- Previous: NASA Robotics Researcher
- Research: Human-Robot Interaction and AI



College of Computing Selects Ayanna Howard to Lead School of Interactive Computing

© DECEMBER 4, 2017 • ATLANTA, GA



Following a national search, the Georgia Tech College of Computing has selected [Ayanna Howard](#), professor and Linda J. and Mark C. Smith Chair in the School of Electrical and Computer Engineering (ECE) to chair its [School of Interactive Computing](#).

Howard, who is also associate chair for faculty development in ECE, will succeed Professor [Annie Antón](#), who served in the role from 2012-17. Antón finished her five-year term in June 2017 and remains a professor within the school. Professor [Amy Bruckman](#)



BUSINESS
INSIDER

TECH

FINANCE

POLITICS

STRATEGY

23 of the most powerful women engineers in the world



Julie Bort



May 15, 2015, 4:15 PM

529,440



FACEBOOK



LINKEDIN



TWITTER



EMAIL



COPY LINK

No. 19: Zyrobotics' Ayanna Howard

Ayanna Howard, Founder & Chief Technology Officer, Zyrobotics.

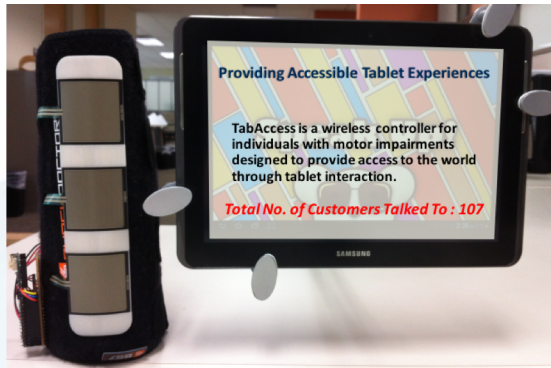
Howard is a professor at Georgia Tech specializing in the intersection of machine learning and robotics,



CRA-W

Computing Research Association
Women

My Entrepreneurship Journey



- Assistive Technology (AT) to enable access to our tablet-based therapy games
- Participated in NSF I-Corps

Zyrobotics develops AI-powered STEM tools and learning games for early childhood education



Hands-On STEM Products



Cloud-Based AI & Analytics



STEM Apps and eBooks

Traction



Over 500K Apps Downloaded to Date



80 Institution/School
Adopters



MOU with California
School District



9 Distributors &
Resellers

Patent Protected: Patents 9120027, 9310904, 9846843



CRA-W

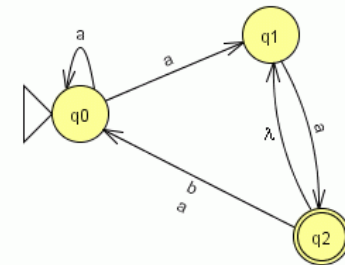
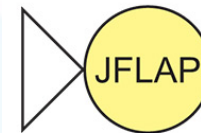
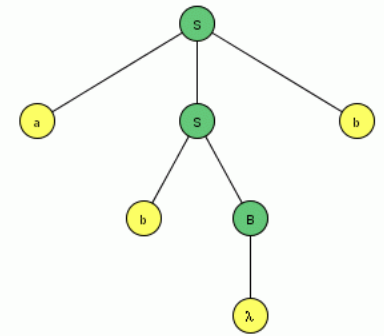
Computing Research Association
Women

My Entrepreneurship Journey

- Professor of the Practice, Duke Univ
- Previously Assistant Prof, Rensselaer P.I.
- Developed JFLAP from 1990-current
 - Educational Software for Automata and Formal languages
 - Over 10 versions of JFLAP
 - Always given JFLAP away for free!
- Curriculum materials for Alice programming
 - Free for anyone



Susan Rodger



Adventures in Alice Programming - Durham, North Carolina Region



Adventures in Alice Programming and Other Workshops
Duke University, Durham, NC

Home
Apply
Free Tutorials
Example
Worlds/Videos



CRA-W

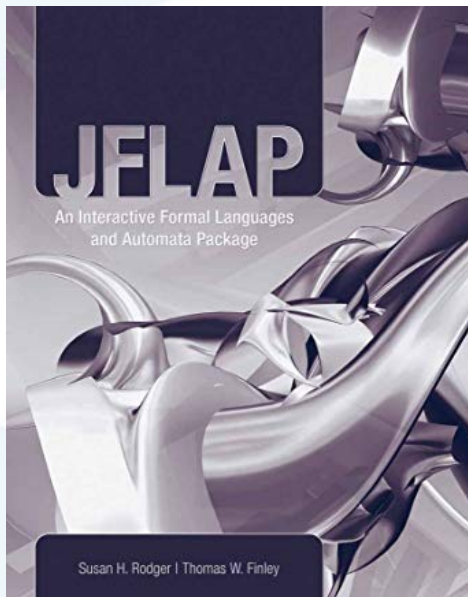
Computing Research Association
Women

Books and Online Courses

- Book on JFLAP – royalties
- Online Courses - Duke Coursera
 - Support – Duke provides a team to build course
 - Extra work, not part of Teaching load at Duke
 - Royalties – Duke/Coursera split, Duke splits with instructors



Susan Rodger



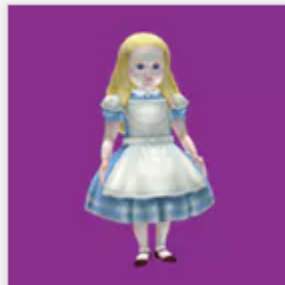
Java Programming and Software Engineering Fundamentals

Duke University

SPECIALIZATION

★★★★☆ 4.6 (5,925) | 200K students

Beginner



Introduction to Programming and Animation with Alice

Instructors: Susan H. Rodger, Stephen C

Draft



CRA-W

Computing Research Association
Women

Success!

- JFLAP
 - Used worldwide in over 160 countries
 - Courses: automata theory, discrete math, compilers, artificial intelligence
 - Google analytics (only since 2012)
 - Over 2 million pageviews, Over 589,000 sessions
 - Name is important! Searchable?
 - Awards! Monetary even! Satisfaction!
- Coursera Java Specialization
 - 5 short courses, launched in 2014
 - Over 1 million looked at the courses
 - Over 25,000 have completed one of the courses
 - Meet them around the world!



CRA-W

Computing Research Association
Women

Success



what people think
it looks like

Success



what it really
looks like



CRA-W

Computing Research Association
Women

Today's Conversation

- What is *entrepreneurship*?
- What are the benefits?
- Full- or part-time entrepreneurship?
- How might you take the leap?
- Q&A



CRA-W

Computing Research Association
Women

Why Entrepreneurship?

Defined...

- Entrepreneurs notice and take advantage of opportunities to use their skills
 - Our experiences
 - Your experience — please share!
- Characteristics of Entrepreneurs
- Intrapreneurship vs Entrepreneurship



CRA-W

Computing Research Association
Women

Why Entrepreneurship? (cont)

Benefits?

- Career and learning opportunities
 - Broadened perspectives
 - Global thinking
- Flex your creativity and problem solving abilities
- Follow your passions
- Be unconventional



CRA-W

Computing Research Association
Women

Why Entrepreneurship? (cont)

Other considerations...

- Success or failure rests with YOU
- You need lots of skills (business, accounting, management)
- Pay may not come immediately
 - *develop* a business plan: distinguish yourself/your business and understand risks
 - *ensure* you have sufficient capital
 - *plan* for the end goal (i.e., acquisition, scaling)
- Expect to work incredibly hard



CRA-W

Computing Research Association
Women

Activity: Find a partner and Come up with as many uses as possible for a scarf. (*Tip: Consider a different customer for each use case.*)



CRA-W

Computing Research Association
Women

Exercise: Think Like an Entrepreneur

- Search for lots of solutions
- Experiment, and ask the right questions
- Keep your customer in mind
- Be creative at brainstorming



CRA-W

Computing Research Association
Women

How does entrepreneurship work?

- Full-time vs part-time
 - devote all time and resources growing business
 - earn capital/investment
- Set goals and track progress
- Consider partnerships
 - co-founder?
 - board of directors?

Think: *If you want to go **fast**, go alone; if you want to go **far**, go together* (African proverb)



CRA-W

Computing Research Association
Women

Making the leap!

- Accept that failure is possible (and okay!), and also leads to success; be flexible
- Decide what good, service you will offer
- Secure your company name
 - rules varies by state, bur process is standard
 - consult accountant, attorney

OR

- Start thinking like an entrepreneur!



CRA-W

Computing Research Association
Women

QUESTIONS?



CRA-W

Computing Research Association
Women