

Graduate School and Personal Life

with

Amy Ko, Pamela Gibbs, Kyla McMullen, and Bushra Anjum



CRA-WP

Computing Research Association
Widening Participation

Hi, I'm Amy

Professor, The Information School
University of Washington, Seattle

Work/life bio

I became a parent in my senior year of undergrad. My daughter age 1-6 during grad school, 7-12 pre-tenure. She's now a Sophomore at UC San Diego. I was divorced by 30, remarried by 36. I've been balancing lots of life with work!

1

Boundaries: During grad school, I only worked 9-5, making the most of that time.

2

Time: Manage it like a precious resource, carving out time on your calendar for work, tracking your commitments.

3

Work culture: Activity resist and refuse toxic norms around evenings + weekends.

4

Cultivate creativity: Reserve time to wander, wonder, be bored. It's fuel for discovery.

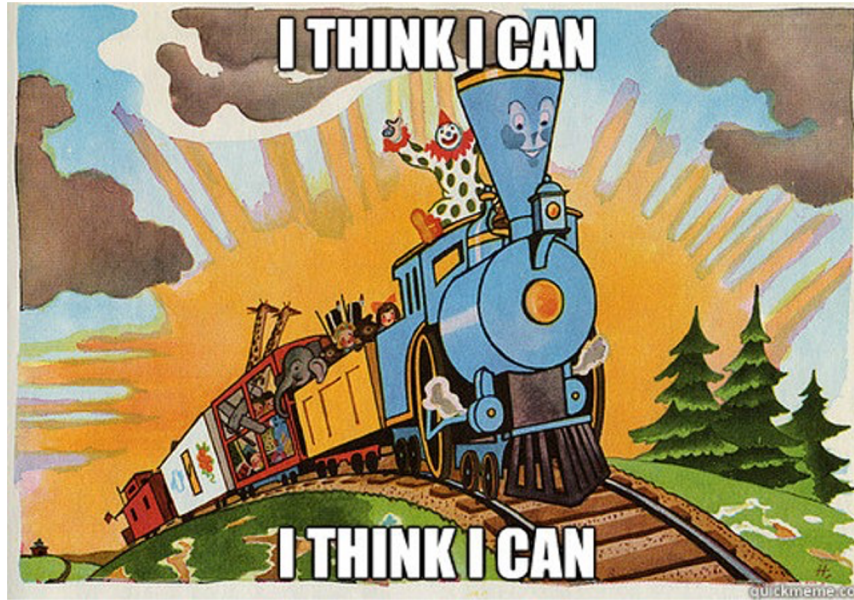
Why is pivoting important?



CRA-WP

Computing Research Association
Widening Participation

What's the big deal about titles?



CRA-WP

Computing Research Association
Widening Participation

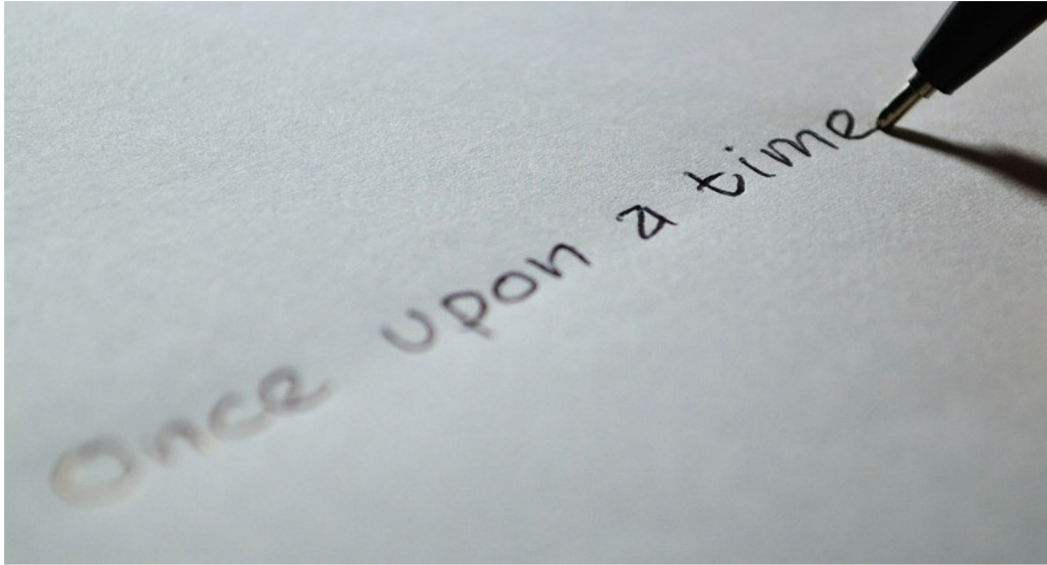
Who makes up your community?



CRA-WP

Computing Research Association
Widening Participation

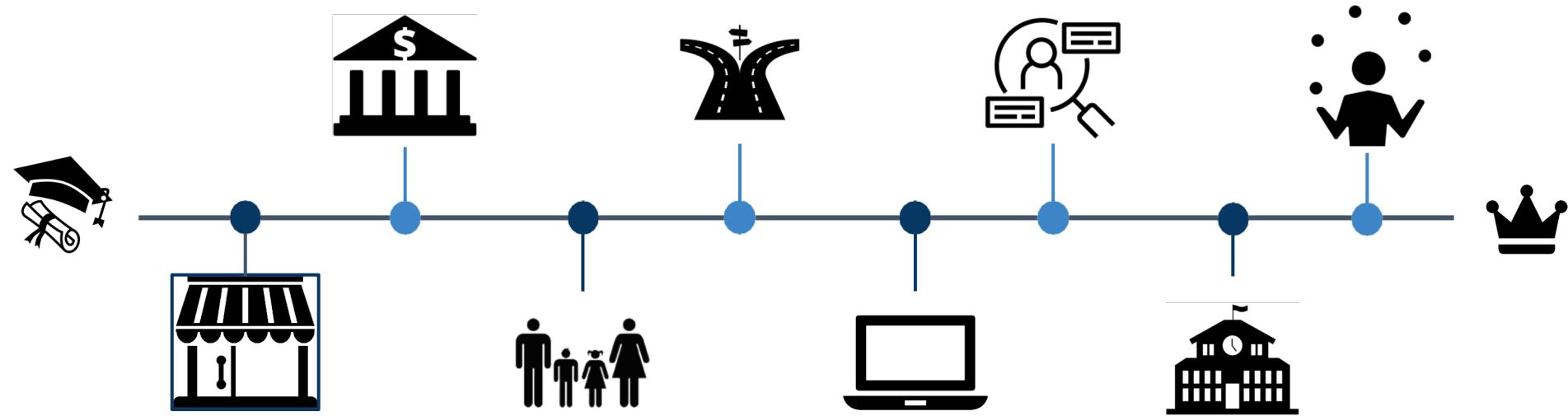
What is your story?



CRA-WP

Computing Research Association
Widening Participation

Who am I?



CRA-WP

Computing Research Association
Widening Participation

Pamela Gibbs

A bit about me

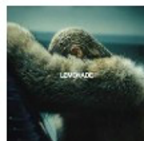
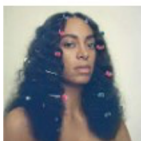


BANK OF AMERICA

NORTHROP
GRUMMAN

Walmart 
Save money. Live better.

Google



CRA-WP

Computing Research Association
Widening Participation

Kyla McMullen

About me:

I am a computer science researcher and professor but I am also so many other things, including a dancer, podcast host, real estate investor (REI), audio engineer in training, pseudo-chef, wife, sister, daughter, friend, etc. I believe that how I spend my hours should reflect that.

1

Schedule everything, including the fun stuff. That way you know what you have time for.

2

Have a creative outlet and make it a non-negotiable part of your weekly schedule.

3

Don't feel guilty for "humaning". You're more useful as a refreshed individual.

4

Say no. A lot. Think about what your "yes" means that you're saying "no" to.

Assistant Professor,
Computer and Information Science and Engineering
University of Florida



CRA-WP

Computing Research Association
Widening Participation

Dr. Bushra Anjum

- ▶ BSCS (FAST), MSCS (LUMS) - *Pakistan*
- ▶ First to go to grad school and get a PhD-CS (NCSU)
- ▶ Academia (NCSU, LUMS, NCSU, MST, Cal Poly)
- ▶ Industry
 - ▶ Amazon – SE, Tech Lead (Prime)
 - ▶ Doximity – Data Lead, Data Analytics Manager
- ▶ Volunteer
 - ▶ ACM Ubiquity, Sr. Editor
 - ▶ ACM–W, Standing Committees Chair
 - ▶ Anitab.org, PWiC, CRA etc.



About me



CRA-WP

Computing Research Association
Widening Participation



@DrBushraAnjum



www.linkedin.com/in/bushraanjum/

Dr. Bushra Anjum

- ▶ BSCS (FAST), MSCS (LUMS) - *Pakistan*
- ▶ First to go to grad school and get a PhD-CS (NCSU)
- ▶ Academia (NCSU, LUMS, NCSU, MST, Cal Poly)
- ▶ Industry
 - ▶ Amazon – SE, Tech Lead (Prime)
 - ▶ Doximity – Data Lead, Data Analytics Manager
- ▶ Volunteer
 - ▶ ACM Ubiquity, Sr. Editor
 - ▶ ACM–W, Standing Committees Chair
 - ▶ Anitab.org, PWiC, CRA etc.

Points to Ponder

- 1) Having a Ph.D. midlife crisis?
- 2) Careers are like jungle gyms
- 3) A Ph.D. does not close doors for you
- 4) Understand the power of "AND"



@DrBushraAnjum



www.linkedin.com/in/bushraanjum/



CRA-WP

Computing Research Association
Widening Participation

Q&A

with

Amy Ko, Pamela Gibbs, Kyla McMullen, and Bushra Anjum



CRA-WP

Computing Research Association
Widening Participation