

INVESTMENTS IN  
STEM RESEARCH & EDUCATION:

# FUELING AMERICAN INNOVATION



COALITION FOR NATIONAL SCIENCE FUNDING  
20TH ANNUAL EXHIBITION AND RECEPTION  
WEDNESDAY, MAY 7, 2014  
RAYBURN HOUSE OFFICE BUILDING  
WASHINGTON, DC

## CO-SPONSORS

American Astronomical Society  
American Mathematical Society  
Associated Universities, Inc.  
Coalition for Academic Scientific Computation  
Consortium of Social Science Associations  
Entomological Society of America  
Federation of American Societies for Experimental Biology

## DONORS

Federation of Associations in Behavioral & Brain Sciences  
The Ohio State University  
Princeton University

Coalition for National Science Funding (CNSF)  
1527 Eighteenth Street, NW Washington, DC 20036  
202.588.1100 · [www.cnsfweb.org](http://www.cnsfweb.org)

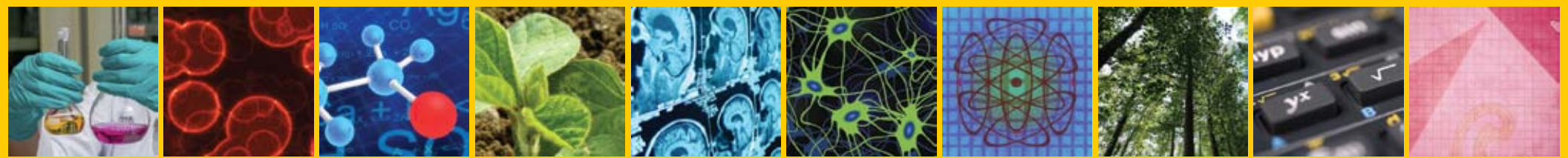


The Coalition for National Science Funding (CNSF) is an alliance of over 135 organizations united by a concern for the future vitality of the national science, mathematics, and engineering enterprise. CNSF supports the goal of increasing the national investment in the National Science Foundation's research and education programs. These programs increase and develop the knowledge base needed for pushing the frontiers of science, mathematics and engineering disciplines; contribute to the development of the future science and technology workforce; underpin new fields of inquiry; and promote interdisciplinary research and education -- all of which facilitate technological innovation.

Showcasing Research and Education Projects  
Supported by the National Science Foundation

[EXHIBIT DETAILS INSIDE »](#)





# EXHIBITORS 2014

## American Economic Association/Population Association of America

Continuity and Change in American Economic and Social Life

Prof. CHARLES BROWN  
University of Michigan

## American Educational Research Association

Integrating Quality Talk Professional Development to Enhance Professional Vision and Leadership for STEM Teachers in High-Need Schools

P. KAREN MURPHY  
The Pennsylvania State University

## American Geosciences Institute/American Geophysical Union/Geological Society of America

25,000 Feet under the Sea: Studying Japan's 2011 Tohoku Earthquake

Dr. PATRICK FULTON and Dr. JAMES SAMPLE  
University of California, Santa Cruz and Northern Arizona University

## American Mathematical Society

Topological Sensor Networks

Prof. ROBERT GHRIST  
University of Pennsylvania

## American Psychological Association/Vanderbilt University

Russell the Robot: Engaging Children with Autism through Psychological and Engineering Research

ZACHARY WARREN, PhD and NILANJAN SARKAR, PhD  
Vanderbilt University

## American Society of Plant Biologists

From Fire to Food: How Smoke Signals May Unlock New Innovations in Agriculture

DAVID C. NELSON, PhD  
University of Georgia

## American Statistical Association

Statistics for Mixed Big Data in Cancer Genomics

Prof. GENEVERA ALLEN  
Rice University

## Associated Universities, Inc.

The National Radio Astronomy Observatory

MARK ADAMS

## Association of Science-Technology Centers Center for Advancement of Informal Science Education

Showcasing EHR Grants: Intersections and CAISE

MARGARET GLASS, PhD

## Brown University

How Mathematics Research Fuels Innovation

Prof. JILL PIPHER and RUTH CRANE  
Institute for Computational and Experimental Research in Mathematics (ICERM)

## Coalition for Academic Scientific Computation

HPC Centers & STEM

Dr. CURT HILLEGAS  
Princeton University

## Computing Research Association

Printable Robots and Soft Robots

ANKUR MEHTA, JOSEPH DELPRETO and ROBERT KATZSCHMANN  
Massachusetts Institute of Technology

## Consortium of Universities for the Advancement of Hydrologic Science Inc.

Water Data Center—Advancing Hydrologic Research and Education

EMILY GEOSLING

## Council on Undergraduate Research

Institutionalizing Undergraduate Research for State Systems and Consortia

SHONTAY KINCAID

## Ecological Society of America

Wildflower Response to Climate Change

Prof. DAVID INOUIYE  
University of Maryland

## Entomological Society of America

Optimizing Crop Yields: Pollinators, Pests and Pathogens

Prof. GARY FELTON and Prof. CHRISTINA GROZINGER  
The Pennsylvania State University

## Genetics Society of America

Beyond the Gene: Epigenetic Control of Seed Development

MARY GEHRING, PhD  
Massachusetts Institute of Technology  
Whitehead Institute for Biomedical Research

## Michigan State University

STEM Genetics: Steps Towards Success

Prof. MICHELLE WILLIAMS and AMY FRAHM

## Museum of Science, Boston

Building Computational Thinking in Museum Exhibits

CLARA CAHILL

## National Communication Association

Improving Public Deliberation through the Citizens' Initiative Review

Prof. JOHN GASTIL and Prof. KATIE KNOBLOCH  
The Pennsylvania State University and Colorado State University

## NC State University

Dielectrics and Piezoelectrics

Dr. ELIZABETH C. DICKEY

## Northwestern University

Rat Whiskers: Novel Engineering Applications and Insights for Neuroscience

Prof. MITRA HARTMANN

## The Ohio State University

Growing STEM Talent at a Large Scale

Prof. DAVID TOMASKO and JASMINE PETERS

## Oregon State University

Sustainable Materials Chemistry and Physics Education Reform

Prof. DOUGLAS KESZLER, Prof. JANET TATE and JENN AMADOR

## Princeton University

High-Assurance Cloud Services

Prof. MICHAEL FREEDMAN

## Society for Industrial and Applied Mathematics

The Mathematics of Stem Cells, Drug Resistance and Cancer

Prof. DORON LEVY  
University of Maryland

## Society for Research in Child Development

Parenting for STEM Success in African American Families

Prof. BETH KURTZ-COSTES and Prof. STEPHANIE ROWLEY  
University of North Carolina, Chapel Hill and University of Michigan

## Tufts University

Engineering Solutions for Clean Water

Dr. KURT PENNELL and Dr. DANIELE LANTAGNE

## University of California

Shaping the Future of Innovation and Research

ROXANE COHEN SILVER, DAVID FELDMAN, ZACH REAGH and KRISTIN ROHER  
University of California, Irvine

Into the Loop Alliance: Exploring Computer Science

JANE MARGOLIS  
University of California, Los Angeles

Fire, Erosion and the Global Carbon Cycle

ASMERET ASEFAW BERHE  
University of California, Merced

Improving Success of First-Generation, Ethnically Diverse Students in STEM Majors

MICHAEL MCKIBBEN  
University of California, Riverside

The Role of the Loss of Anti-Oxidants in Developing Liver Tumors

BRITTANY ANDERTON  
University of California, San Francisco

## University of Colorado, Boulder

CCAT Telescope: Research, Technology and Training

Prof. JASON GLENN

## University of Illinois at Chicago

Faces of STEM Education & Research at UIC

Prof. MITRA DUTTA

## University of New Mexico

An HSI Doing World Class Research and Education in Micro-Engineered Materials

CARLOS ROMERO

## West Virginia University

The Pulsar Content of Globular Clusters

Dr. DUNCAN LORIMER



# COALITION FOR NATIONAL SCIENCE FUNDING

Afterschool Alliance  
American Anthropological Association  
American Association for the Advancement of Science  
American Association for Dental Research  
American Association of Physics Teachers  
American Astronomical Society  
American Chemical Society  
American Educational Research Association  
American Geosciences Institute  
American Geophysical Union  
American Institute for Medical and Biological Engineering  
American Institute of Biological Sciences  
American Institute of Physics  
American Mathematical Society  
American Physical Society  
American Physiological Society  
American Political Science Association  
American Psychological Association  
American Society for Biochemistry and Molecular Biology  
American Society for Engineering Education  
American Society for Microbiology  
American Society of Agronomy  
American Society of Civil Engineers  
American Society of Mechanical Engineers  
American Society of Plant Biologists  
American Sociological Association  
American Statistical Association  
Arafune Government Relations Group  
Arctic Research Consortium of the U.S. (ARCS)  
Associated Universities, Inc.  
Association for Psychological Science  
Association for the Sciences of Limnology & Oceanography  
Association for Women in Mathematics  
Association for Women in Science  
Association of American Geographers  
Association of American Medical Colleges  
Association of American Universities  
Association of Environmental & Engineering Geologists  
Association of Public and Land-grant Universities  
Association of Research Libraries  
Association of Science-Technology Centers  
Association of Universities for Research in Astronomy, Inc. (AURA)  
Association of University Research Parks  
The Bagley Group, LLC  
Biophysical Society  
Boise State University  
Boston University  
Brown University  
California Institute of Technology  
Cavarocchi Ruscio Dennis Associates, LLC  
Coalition for Academic Scientific Computation  
Coastal and Estuarine Research Federation  
Columbia University  
Computing Research Association  
Consortium for Ocean Leadership  
Consortium of Social Science Associations  
Consortium of Universities for the Advancement of Hydrologic Science  
Cornell University  
Council of Graduate Schools  
Council of Scientific Society Presidents  
Council on Food, Agricultural and Resource Economics  
Council on Undergraduate Research  
Crop Science Society of America  
Duke University  
Earthquake Engineering Research Institute  
Ecological Society of America  
Entomological Society of America  
Federation of American Societies for Experimental Biology  
Federation of Associations in Behavioral & Brain Sciences  
Federation of Materials Societies  
Genetics Society of America  
Geological Society of America  
Georgia Institute of Technology  
Harvard University  
Human Factors and Ergonomics Society  
IRIS Consortium  
Indiana University  
Institute of Electrical and Electronics Engineers (IEEE-USA)  
Lewis-Burke Associates LLC  
Linguistic Society of America  
Madison Associates LLC  
George Mason University  
Massachusetts Institute of Technology  
Materials Research Society  
Mathematical Association of America  
Michigan State University  
Museum of Science, Boston  
MWW Group  
National Association of Marine Laboratories (NAML)  
National Communication Association  
National Council for Science and the Environment  
National Ecological Observatory Network (NEON)  
National Ground Water Association  
National Postdoctoral Association  
National Science Teachers Association  
National Society of Professional Engineers  
North Carolina State University  
Northwestern University  
The Ohio State University  
The Oldaker Group, LLC  
Optical Society of America  
Oregon State University  
Ornithological Council  
Pennsylvania State University  
Population Association of America/Association of Population Centers  
Princeton University  
Rensselaer Polytechnic Institute  
Research!America  
Rowan University  
Rutgers, The State University of New Jersey  
Seismological Society of America  
Semiconductor Industry Association  
Society for American Archaeology  
Society for Historical Archaeology  
Society for Industrial and Applied Mathematics  
Society for Neuroscience  
Society for Research in Child Development  
Soil Science Society of America  
SPIE  
State University of New York System (SUNY)  
State University of New York at Stony Brook  
Stevens Institute of Technology  
Texas Tech University  
Tufts University  
UNAVCO  
University Corporation for Atmospheric Research  
University of California  
University of Chicago  
University of Cincinnati  
University of Colorado, Boulder  
University of Florida  
University of Illinois  
University of Michigan  
University of New Mexico  
University of New Orleans  
University of Pennsylvania  
University of South Carolina  
University of Wisconsin  
Vanderbilt University  
Washington State University  
Washington University in St. Louis  
Wells Consulting  
West Virginia University  
Woods Hole Oceanographic Institution