

Corridor Talk: necessary informal inside information

NIH, Its Institutes, and Its Funding Mechanisms
for Medical Research

Terry S. Yoo

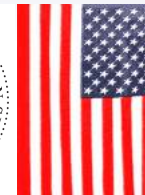
Office of High Performance Computing and Communications

National Library of Medicine

National Institutes of Health

U.S. Department of Health and Human Services

United States of America, North American Continent, Earth



cor - ri -dor talk *n* **1:** the practice of passing on tips, insights, and strategies about the means of production of academic work (as at professional conferences, where, it is frequently remarked, the most important business takes place “out in the corridor” rather than inside the meeting rooms) **2:** nonascribable (off-the-record) but necessary information; practical gossip **3:** common-sense, informal (not publicly taught) mentoring; the unsaid , but frequently said anyway (though not to everyone).

Goals

1. Overview of NIH.
2. Briefly cover NIH procedures.
 - Normal pathway for a grant proposal
 - Roles of NIH
 - Roles of PI
 - Ways you can help in process
 - Things not to do

Provide researchers new to NIH with information to help improve the overall quality of new proposals in biomedical engineering research.

The Government is a very big place.
NIH is a pretty big place.

Give a basic introduction to the National Institutes of Health.

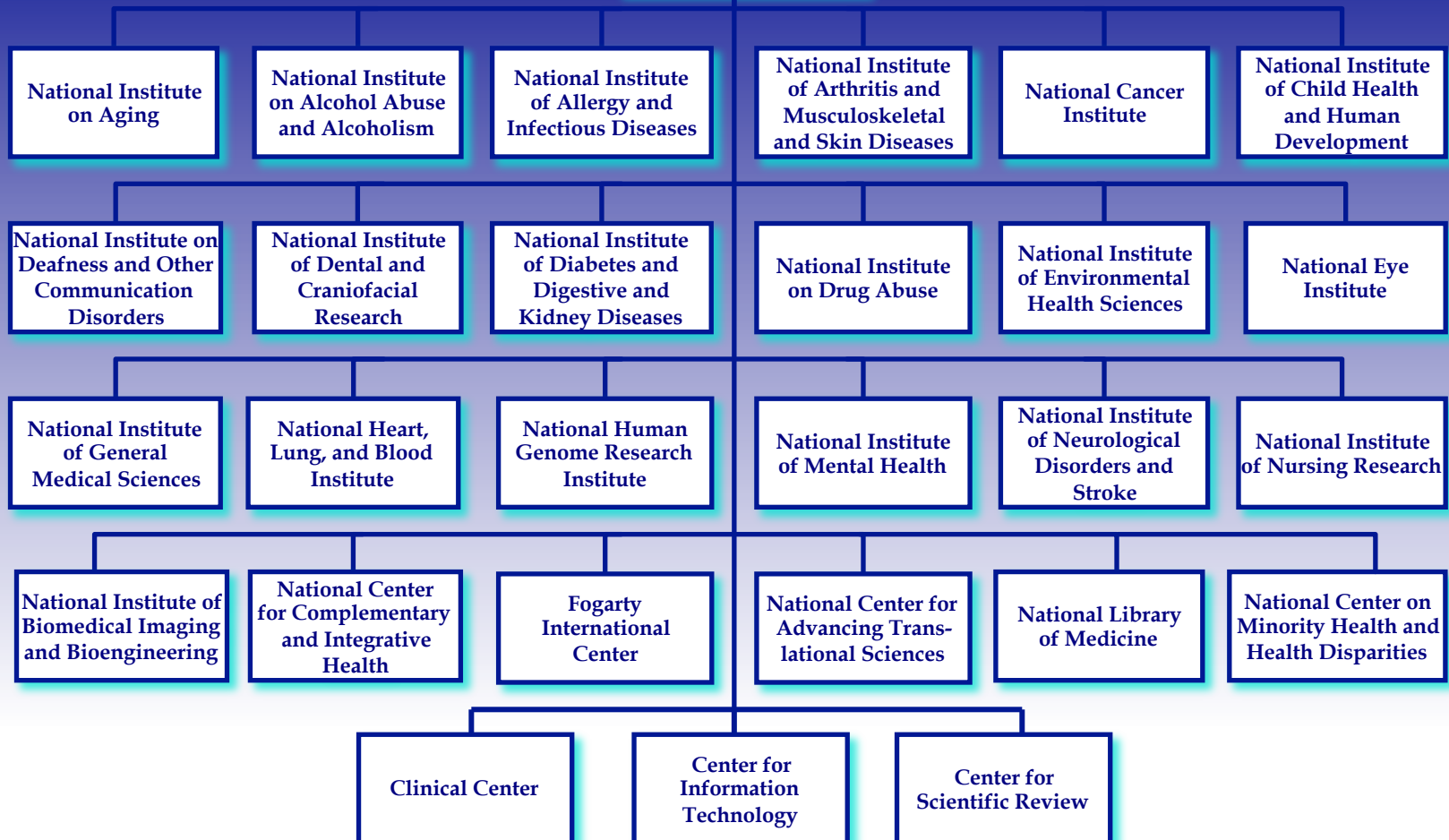
Give a basic introduction to the NIH funding picture and some basic differences from NSF

DARPA: \$2.91 Billion NSF: \$7.254 Billion
NASA: \$17.461 Billion DOE: \$27.941 Billion
NIH: \$30.203 Billion

Source: the 2015 Presidential budget request

National Institutes of Health

Office of the Director



Mission of the NIH

Promoting the nation's health through research.

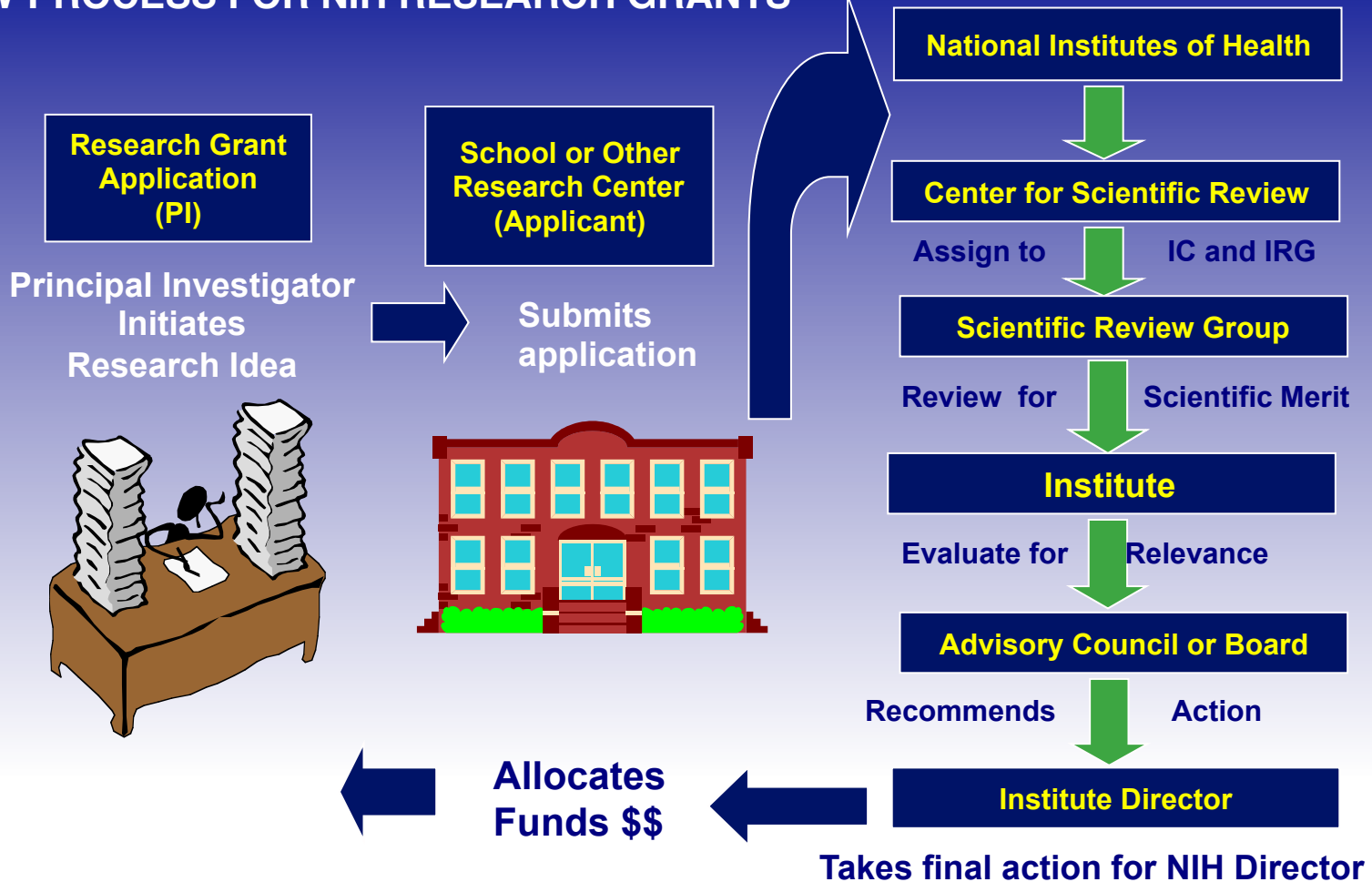
1. Intramural research (NIH labs) - 10% of the budget, 6,000 scientists
2. Extramural research (grants) - 80-90% of the budget

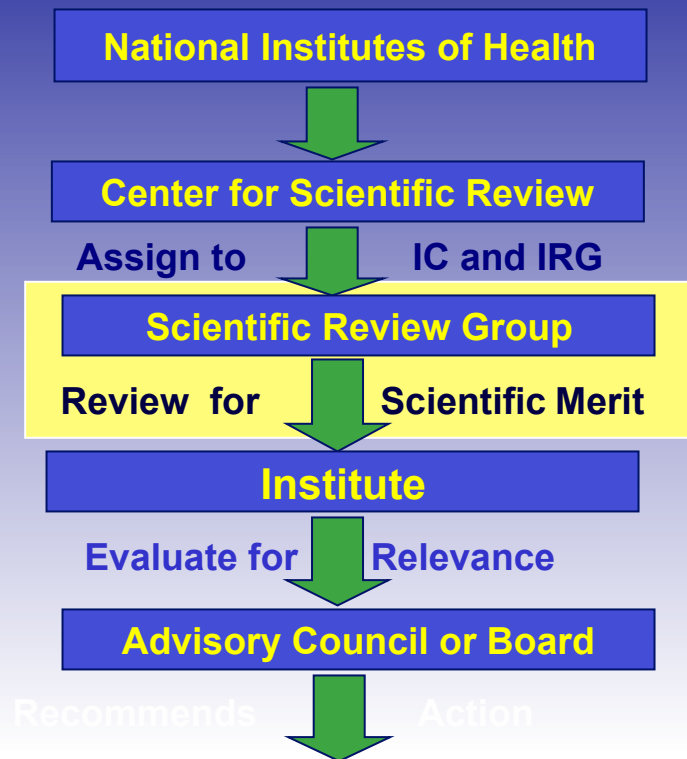
Not a monolithic Agency - 27 Institutes and Centers

NCI \$5.2B	NIAID \$4.6B	NHLBI \$3.1B	NIDDK \$2.0B	NINDS \$1.7B	NIMH \$1.5B
NICHD \$1.3B	NIA \$1.6B	NIDA \$1.1B	NIEHS \$0.8B	NEI \$0.7B	NIAMS \$0.5B
NIAAA \$0.5B	NIDCD \$0.4B	NIDCR \$0.4B	NIMHD \$0.3B	NCCIH \$0.1B	NINR \$0.1B
NIGMS \$2.5B	NCATS \$0.6B	NHGRI \$0.5B	NLM \$0.4B	NIBIB \$0.3B	
CC	CIT	CSR	FIC	OD	

Source: <https://officeofbudget.od.nih.gov/pdfs/FY17/31-Overview.pdf>

REVIEW PROCESS FOR NIH RESEARCH GRANTS





IRG = SRG = Panel = Study Section
Conducts the scientific review

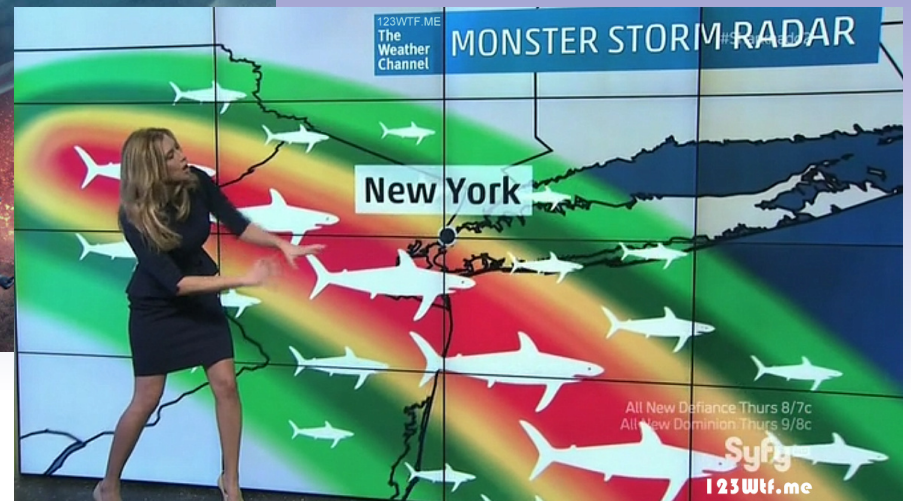
Primary Reviewer
Secondary Reviewer
Reader

Closed ballot for scores

Reviews are penned before
(Score can seem disconnected)

Others in room, but non-voting

Perceived Study Section



CSR Study Sections



1. Each CSR standing study section has 12-24 members who are primarily from academia
2. CSR standing study sections convene face-to-face meetings
3. As many as 60-100 applications are reviewed by each study section

CSR Standing Study Sections

CSR Internet - Standing

public.csr.nih.gov/StudySections/Standing/Pagi

Search

NIH Center for Scientific Review

NIH Program Resources | Staff Directory | Contact | Press Kit

Search this site... Go

About CSR Applicant Resources Reviewer Resources Study Sections Rosters and Meetings Employment

Integrated Review Groups Standing Small Business and Technology Transfer Fellowship Special Emphasis

CSR Home > Study Sections > Standing

Roster Index for Regular Standing Study Sections and Continuing SEPs

Study Section	Study Section Description	SRO
ACE	AIDS Clinical Studies and Epidemiology Study Section	Sigmon, Hilary
ACTS	Arthritis, Connective Tissue and Skin Study Section	Ansari, Aftab
ADDT	AIDS Discovery and Development of Therapeutics Study Section	Prasad, Shiv
AICS	Atherosclerosis and Inflammation of the Cardiovascular System Study Section	Komissarova, Natalia
AIP	AIDS Immunology and Pathogenesis Study Section	Prasad, Shiv
AMCB	AIDS Molecular and Cellular Biology Study Section	Roebuck, Kenneth
ANIE	Acute Neural Injury and Epilepsy Study Section	Bhagavan, Seetha
AOIC	AIDS-associated Opportunistic Infections and Cancer Study Section	Montalvo, Eduardo
APDA	Adult Psychopathology and Disorders of Aging Study Section	Chu, Serena
ARM	Addiction Risks and Mechanisms Study Section	Prentice, Kristen
ASG	Aging Systems and Geriatrics Study Section	Beltins, Inese
AUD	Auditory System Study Section	Luethke, Lynn
BACP	Bacterial Pathogenesis Study Section	Scidmore, Marci
BBM	Biochemistry and Biophysics of Membranes Study Section	Assa-Munt, Nuria
BCHI	Biomedical Computing and Health Informatics Study Section	Jenkins, Melinda
BDMA	Biodata Management and Analysis Study Section	Caprara, Mark
BGES	Behavioral Genetics and Epidemiology Study Section	Vogler, George
BINP	Brain Injury and Neurovascular Pathologies Study Section	Yakovlev, Alexander
BMBI	Biomaterials and Biointerfaces Study Section	Mosca, Joseph
BMCT	Basic Mechanisms of Cancer Therapeutics Study Section	Rahman Sesay, Lambratu
BMIQ	Behavioral Medicine, Interventions and Outcomes Study Section	Mann, Lee
BMIT-A	Biomedical Imaging Technology A Study Section	Grossman, Ruth
BMIT-B	Biomedical Imaging Technology B Study Section	Bradley, Eileen
BMRD	Biostatistical Methods and Research Design Study Section	Kozel, Peter
BNVT	Bioengineering of Neuroscience, Vision and Low Vision Technologies Study Section	Elliott, Robert
BPNS	Biophysics of Neural Systems Study Section	Schofield, Geoffrey

CSR Standing Study Section Rosters

The screenshot displays a web browser window with the URL `internet.csr.nih.gov/Rosters/MtgRoster.aspx?a=`. The page is titled "CSR Meeting Roster" and features the NIH logo and navigation links. The main content area is titled "BCHI (02/05/2016 - 02/05/2016)" and "Center For Scientific Review MEETING ROSTER".

CHAIRPERSON

MENDONCA, ENEIDA A, MD, PHD
ASSOCIATE PROFESSOR
DEPARTMENT OF BIOSTATISTICS AND
MEDICAL INFORMATICS
SCHOOL OF MEDICINE
UNIVERSITY OF WISCONSIN-MADISON
MADISON, WI 53706

MEMBERS

AREF, WALID G, PHD
PROFESSOR
DEPARTMENT OF COMPUTER SCIENCE
COLLEGE OF SCIENCE
PURDUE UNIVERSITY
WEST LAFAYETTE, IN 47907

ARONOW, BRUCE J, PHD (*)
PROFESSOR
DIVISION OF BIOMEDICAL INFORMATICS AND MOLECULAR
DEVELOPMENT BIOLOGY, DEPARTMENT OF PEDIATRICS
UNIVERSITY OF CINCINNATI
CHILDREN'S HOSPITAL RESEARCH FOUNDATION
CINCINNATI, OH 45229

BELL, RONNY A, PHD
PROFESSOR OF EPIDEMIOLOGY AND PREVENTION
DIRECTOR, MAYA ANGELOU CENTER FOR HEALTH EQUITY
SCHOOL OF MEDICINE
WAKE FOREST UNIVERSITY
WINSTON-SALEM, NC 27157

CANTOR, MICHAEL N, MD (*)
DIRECTOR OF CLINICAL RESEARCH INFORMATICS AND ASSOCIATE PROFESSOR
DEPARTMENT OF POPULATION HEALTH
SCHOOL OF MEDICINE
NEW YORK UNIVERSITY
NEW YORK, NY 10016

DIXON, BRIAN EDWARD, PHD (*)
ASSISTANT PROFESSOR AND RESEARCH SCIENTIST
IU FAIRBANKS SCHOOL OF PUBLIC HEALTH
REGENSTRIEF INSTITUTE
INDIANAPOLIS, IN 46202



Institute Council makes funding decision

Score
Relevance
Mission concerns

Program Officer often in room,
but non-voting

How do you decide where to send your grant?

- Many institutes to choose from
 - Which one is right?
 - Look at mission statements of likely institutes
 - Does your research fit?
- Is there a PA or RFA on your research area?
 - How to find out about these?
 - Use the NIH website to search them
 - www.nih.gov
- No PA or RFA? OK if no RFA (“Investigator Initiated” R01)
- Which institute(s) is right?
 1. Mission statements
 2. How to narrow them down?
 - Look at portfolio for those institutes
 3. Perhaps it is better not to narrow them down
 - Double listing can be best
 - Paylines and priorities differ
- Speak with Program Officers

Ask ADVICE from the Program Officer

- Tell him/her about your research goals
 - What type of grant are you going for?
- Ask:
 - Is this the right institute?
 - Should I have a dual funding assignment?
 - What study section would be good for my grant?
 - Any comments on the science?
- How are new PIs helped?
 - On your PHS398, check the box for new investigators
You are new until you get your first RO1, smaller grants don't count
 - If you have a good relationship with Program officer and he/she needs your app to fill in a gap in his portfolio
You might get rescued from the no fund pile and put in for funding even with a worse score than others

Your number one goal must be to become a face or name, rather than a proposal number!

Investigate study section

- Make sure that someone on that panel knows your field and the techniques you will be using
- If no one is available on panel
 - Once you get your SRO and study section assignment, write a letter asking for someone in a particular field or area of expertise to be added to the study section

What not to do?

1. Never Demand
2. Never ask for snap decision (ask advice)
3. Never contact IRG members!
4. Never assume that the IRG member you don't like did you in in the meeting.
5. Never ignore comments, even from “stupid” reviewers

