

Finding the Help You Need & Deserve

Jeff Forbes, Duke

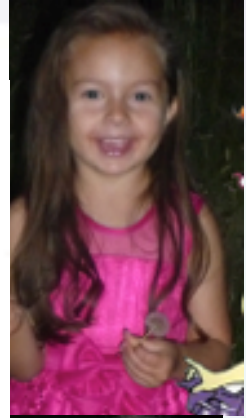
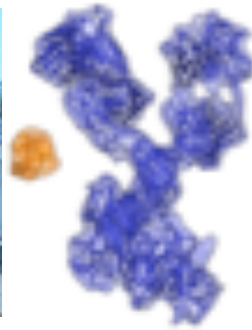
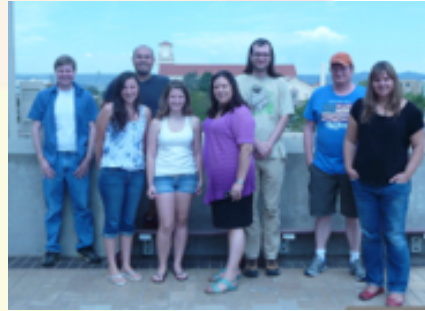
Lydia Tapia, University of New Mexico

2018 CRA URMD Grad Cohort Workshop



Lydia in One Slide

- PhD, Texas A&M 2009
- Postdoc, UT Austin
- Assistant Professor, UNM 2011- 2017
- Associate Professor, UNM 2017-present
- Research: smart motion planning for high-dimensional and complex systems (robots and molecules)
- Family: great husband, eight year old daughter, two cats, one dog



Jeff in One Slide

- PhD, University of California, Berkeley, 2002
- Assistant Professor of the Practice, 2001
- Associate Professor of the Practice, 2009
- Program Director, NSF CISE/CNS, 2011-2014
- Associate Dean, 2014-2017
- Research: Computer Science Education & Learning Analytics
- Family: Great wife and 9-year old son



Topics

- What to do before you need help (Jeff)
 - How to building networks
 - Peer networks
 - Career advising network (more advanced than you)
 - Where to find people for your networks
 - How to approach people for your networks
- What to do when you need help (Lydia)
 - Navigate your networks
 - How to deal with embarrassing/personal topics
 - Go to multiple people for help (resolve conflicts)

Elements of success?

- Write papers!
- Transcripts won't matter
- Classes as tool to launch research
- Break up problems into small manageable (< 1 week) pieces
- Be visible
- Keep your advisor happy
- Don't
 - Do busywork on a big project
 - Spin your wheels
 - Reinvent your project too often
- Read *Getting What You Came For* by Robert Peters

Working towards success

- Community
 - Initiatives & organizations
 - Peer study groups
 - Moving Towards Future Objectives
 - 2k Club
- Mentors
 - Many places, many faces

Sustaining success via Networks

- Where to find people for your networks?
 - Within your group
 - Within your department
 - Outside your department
 - Outside your institution
- How to approach people for your networks?
 - Common interests
 - Persistence

My Perfect Network Example



Consider Your Networks When Seeking Help

peer (local)



peer (remote)



Faculty (advisor)



Faculty (other)



administrator



Multiple Sources of Help

Go through any differences, highlight those and take them to your advisor.



Man, I don't know.
Good luck!



From advice:
-Find the constant pieces
-Find the best pieces



Yeah, that happened to me before. Took me forever to find a new topic. Talk to your advisor.



Guess you'll be here longer. Talk to your advisor.

Yet Another Example

Do Z.



How should I know?



From advice:
-Trust your own judgement!
-Keep seeking the advice you need.
-Move through your other networks.

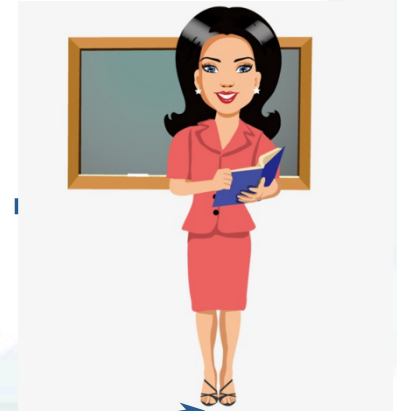
Do X.



Do Y.



Help When Disagreement Is Expected





Sensitive Topic



- Assess your networks carefully, go to trusted resources
- Keep work networks work-related
 - Focus on the effect on your work
 - Provide only details needed
- It's probably not as bad as you think.



CRA
Computing Research
Association





CRA
Computing Research
Association



CRA
Computing Research
Association